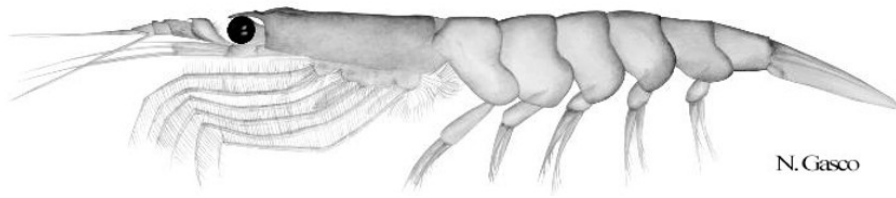


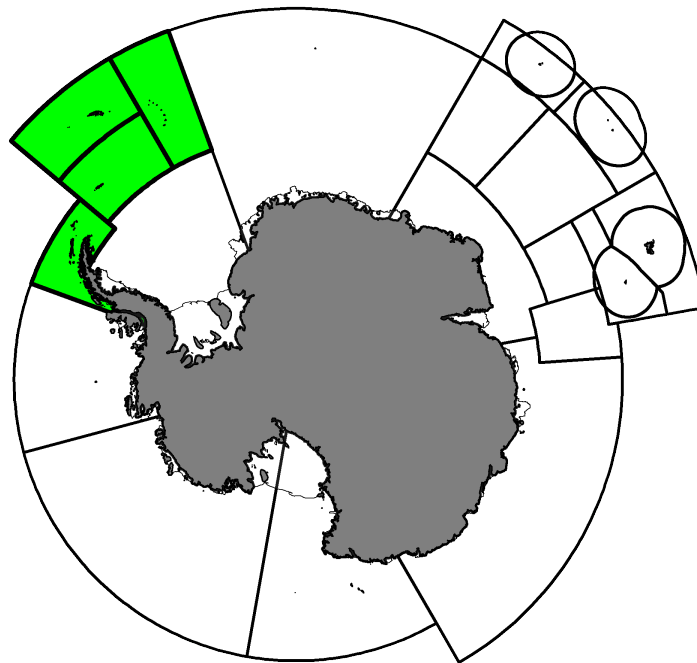
Fishery Report 2025: *Euphausia superba* in Area 48

CCAMLR Secretariat

02 March 2026



Antarctic krill, *Euphausia superba* Dana, 1850.



Map of the management areas within the CAMLR Convention Area. Subareas 48.1 to 48.4, the regions discussed in this report are shaded in green. Throughout this report, “2025” refers to the 2024/25 CCAMLR fishing season (from 1 December 2024 to 30 November 2025). Coastlines and ice shelves: UK Polar Data Centre/BAS and Natural Earth. Projection: EPSG 6932.

Contents

1. Introduction to the fishery	3
1.1. History	3
1.2. Conservation Measures currently in force	7
1.3. Active vessels	8
1.4. Catch and effort reporting	9
2. Reported catch	9
2.1. Latest reports and limits	9
2.2. By-catch	12
2.3. Incidental mortality of seabirds and marine mammals	17
2.4. Estimation of krill green weight	20
3. Illegal, Unreported and Unregulated (IUU) fishing	20
4. Data collection	21
4.1. Data collection requirements	21
4.2. Summary of available data	22
4.3. Length frequency distributions	23
5. Ecosystem implications and effects	26
6. Stock status	28
7. Climate Change and environmental variability	28
References	28
Additional Resources	29
Appendix	30

1. Introduction to the fishery

1.1. History

The commercial fishery for Antarctic krill (*Euphausia superba*) was initiated in 1961/62 when 47 tonnes were taken by two research vessels from the USSR. During the following decade, small catches of krill were reported by the USSR as part of the research phase of the fishery development. A multi-vessel multi-nation fishery for krill was active by the early to mid-1970s (Fig. 1).

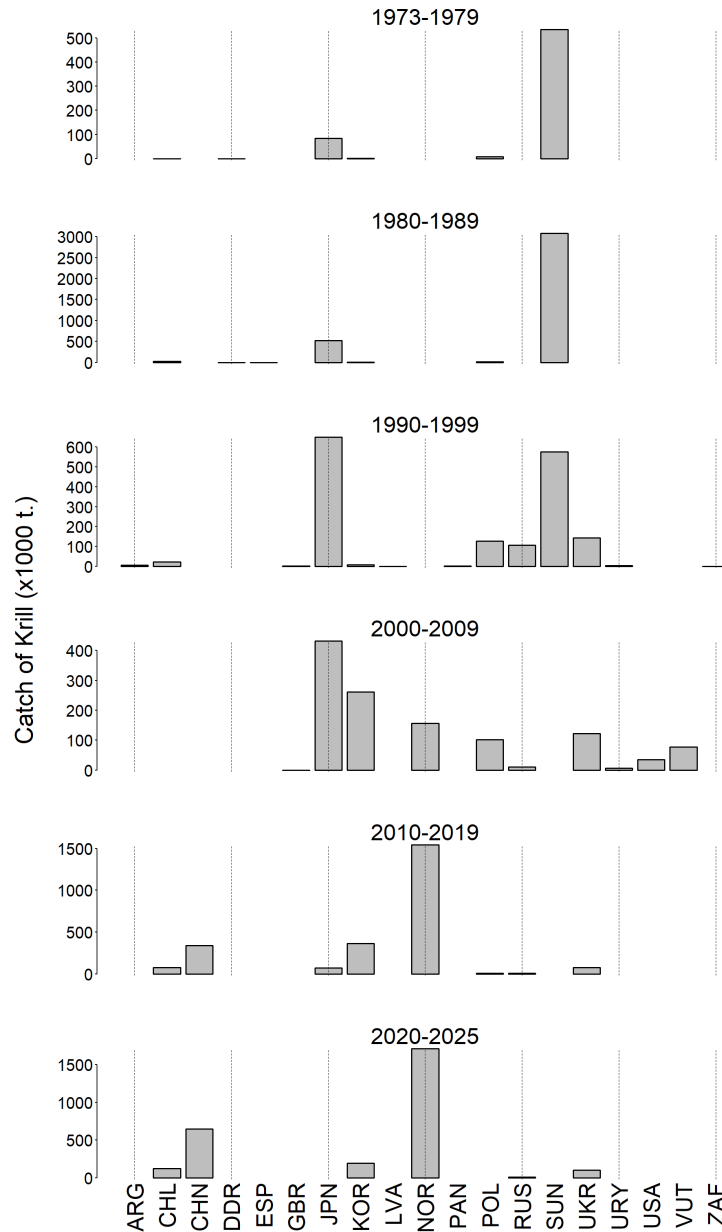


Figure 1. Decadal catches of krill in the CAMLR Convention Area reported by Argentina (ARG), Chile (CHL), China (CHN), German Democratic Republic (DDR), Spain (ESP), United Kingdom (GBR), Japan (JPN), Republic of Korea (KOR), Latvia (LVA), Norway (NOR), Panama (PAN), Poland (POL), Russian Federation (RUS), USSR (SUN), Ukraine (UKR), Uruguay (URY), United States of America (USA), Vanuatu (VUT) and South Africa (ZAF). (Source: Statistical Bulletin and C1 data for most recent season).

The history of catches in the krill fishery (Fig. 2) shows the initial increase in catches followed by a sudden decrease in 1983 and 1984, associated with technical difficulties in the fishery (Budzinski et al., 1985) and/or with an ecosystem anomaly that also impacted the reproductive performance of krill predators in Subarea 48.3 in 1984 (Priddle et al., 1988). The large drop in catches from 1992 to 1993 reflects the redeployment of the eastern bloc far-seas fisheries fleet following the dissolution of the USSR. The increase in catches since 2010 is largely driven by Norway. The catch in Area 48 reached its historical maximum in 2025, attaining the trigger level established in Conservation Measure 51-01, and the fishery was closed on 1 August 2026 for the first time.

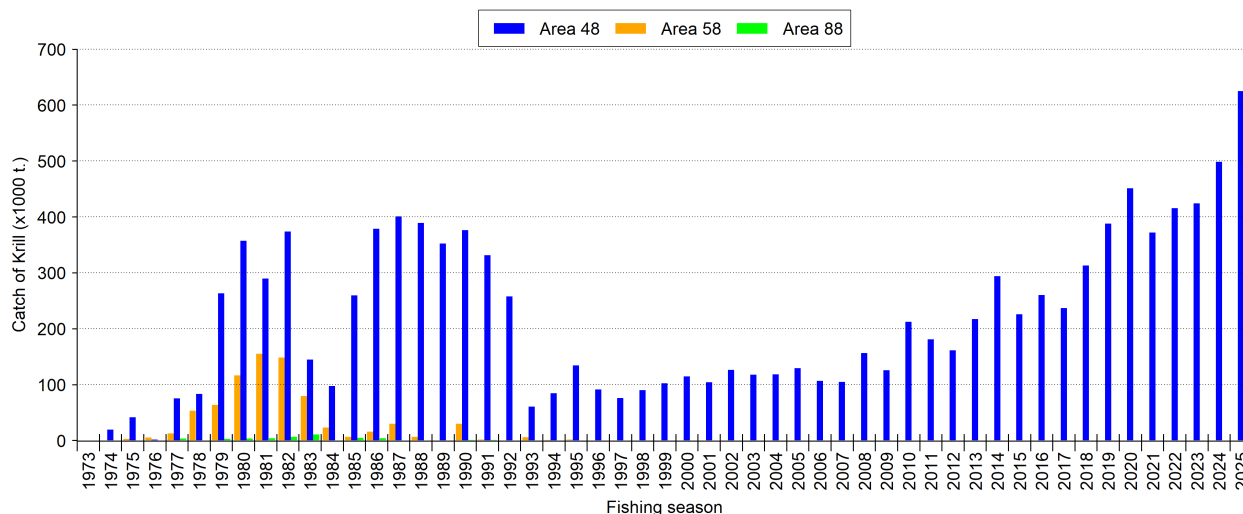


Figure 2. Annual catches of Antarctic krill (*Euphausia superba*) in the CAMLR Convention Area.

The CCAMLR database holds data on krill catches starting in 1973. The majority of the catch was reported by the USSR (34.8%), Norway (27.5%), Japan (14.2%), China (7.9%) and Republic of Korea (6.7%). The other fishing nations reported less than 5% of the catch. The CCAMLR Members that have fished for 20 years or more are Japan (40 years), Republic of Korea (38 years), Poland (33 years), Chile (27 years), Ukraine (25 years) and Norway (20 years). Catches of krill have been reported by 19 nations, including catches reported by Latvia in 1993, Panama in 1995 and Vanuatu in 2004 and 2005 (Fig. 1). In the period 2015-2025, six Members have fished for krill, 62.6% of the total catch has been taken by Norway, 20.8% by China and 8.4% by the Republic of Korea.

The continuous fishing system (a system where the codend of the net is emptied via a pump connected to the vessel rather than being hauled aboard as in ‘traditional’ trawling) was first used in the krill fishery in 2004 by a Vanuatu-flagged vessel, this vessel also fished in 2005. It was replaced by a Norwegian vessel, also using the continuous fishing system, in 2006. Both this fishing method and traditional trawling continue to be used in the krill fishery.

As the fishery developed, the location of fishing has moved from the Indian Ocean to the Atlantic Ocean sector and has focused almost entirely in the Atlantic sector since the early 2000s (Fig. 3). In the past 10 years, the spatial distribution of the fishery has become focused in the region of the Bransfield Strait off the Antarctic Peninsula (Subarea 48.1), to the northwest of Coronation Island (Subarea 48.2) and to the north of the main island in Subarea 48.3.

Given the geographic focus of the krill fishery in recent decades, the remainder of this report is focused on Area 48. There are catch limits for krill in Divisions 58.4.1 and 58.4.2 (see Conservation Measures 51-02 and 51-03) but there was no commercial krill fishing in these two divisions between 1991 and 2016 and only small level of catches since 2017.

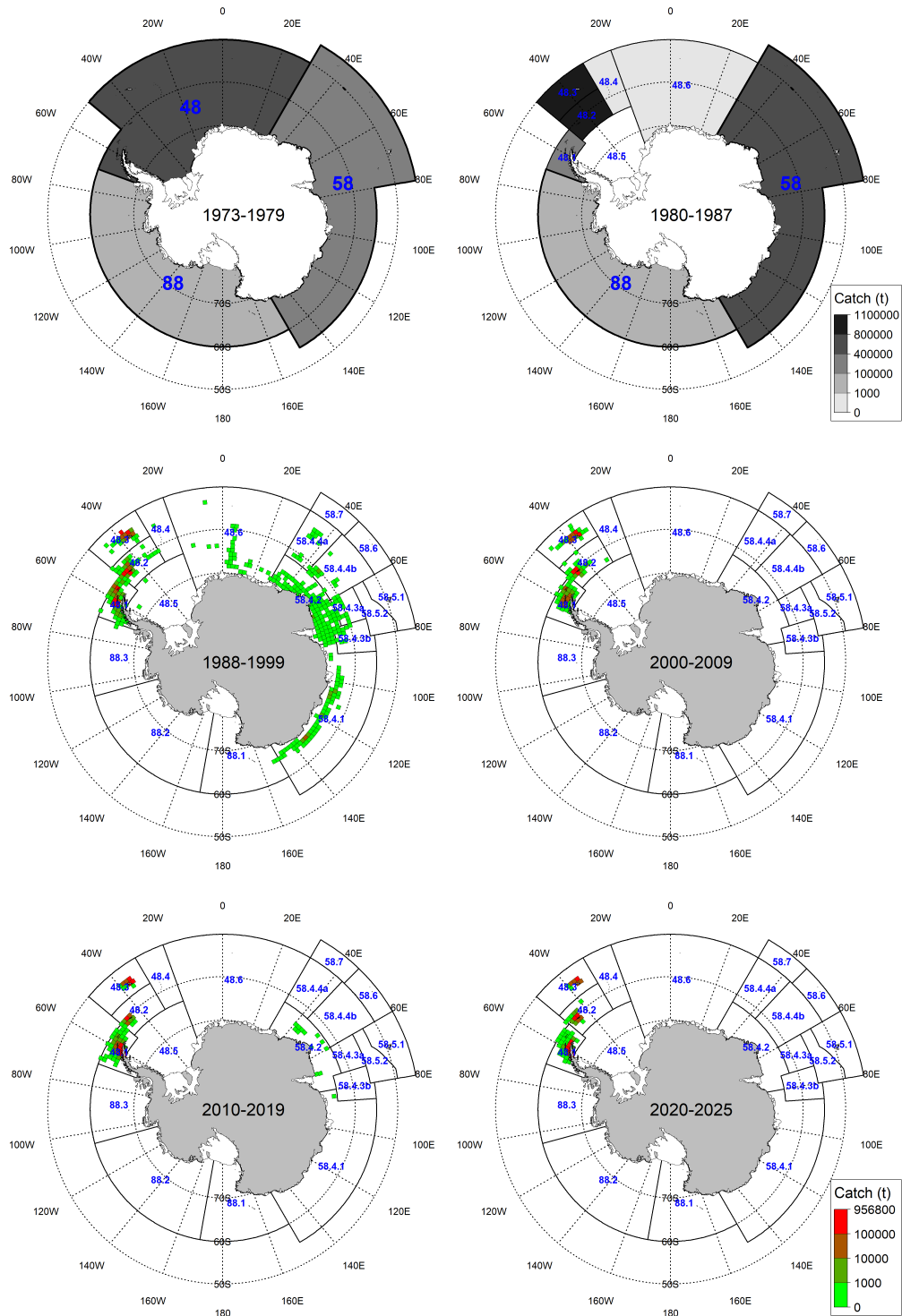


Figure 3. Spatial distribution of catches by decade in the krill fishery reported to CCAMLR (Source: FAO STATLANT data before 1988, C1 data since 1988). In the period 1973-1979, catches are reported at the scale of the FAO Major Fishing Areas: Area 48 (South Atlantic sector), Area 58 (Indian Ocean sector) and Area 88 (Pacific Ocean sector). In the period 1980-1987, this reporting includes catches by Subarea within Area 48. Since 1988 the provision of catch data to CCAMLR has either been at a spatial scale of 1 deg. longitude by 0.5 deg. latitude, with catches aggregated over monthly, 10-day and daily timescales, or, by individual haul. The aggregation of the data in the four lower panels uses equal area (100 km x 100 km) cells. Coastlines and ice shelves: UK Polar Data Centre/BAS and Natural Earth. Projection: EPSG 6932.

In 1991 CCAMLR agreed Conservation Measure 32/X in which the total catch of *Euphausia superba* in Statistical Area 48 was limited to 1.5 million tonnes in any fishing season based on the outcome of a krill yield model. That conservation measure also specified that catch limits, to be agreed by the Commission on the basis of advice of the Scientific Committee, would be applied to Subareas (or other spatial management units) if the total catch in Subareas 48.1, 48.2 and 48.3 in any fishing season exceeded 620,000 tonnes. In effect this set a constraint on the fishery by requiring an additional management approach if the catch exceeded 620,000 tonnes; a measure that was introduced to restrict the potential for all of the 1.5 million tonne catch limit being taken from a small part of the overall area.

The limit of 620,000 tonnes is based on historical catches in Area 48 and represents the sum of the maximum catch taken from each of the subareas over the history of the fishery (it should not be, but sometimes is, confused with the maximum catch ever taken in the whole of Area 48 in one year).

In 2000, following a large-scale survey of krill in Area 48 (which estimated the biomass to be 56 million tonnes), CCAMLR agreed Conservation Measure 32/XIX that set the revised catch limit in Statistical Area 48 to 4.0 million tonnes and divided this into subarea specific catch limits of 1.008 million tonnes in Subarea 48.1, 1.104 million tonnes in Subarea 48.2, 1.056 million tonnes in Subarea 48.3 and 0.832 million tonnes in Subarea 48.4. Conservation Measure 32/XIX also determined that if the total catch in Statistical Area 48 in any fishing season exceeded 620,000 tonnes that the subarea catch limits should be applied to smaller management units. In doing so Conservation Measure 32/XIX retained the practice of setting a catch limit for the whole of Area 48 and dividing it between subareas; furthermore it required catch limits to be in place for management units smaller than Subareas if fishing in any season exceeded 620,000 tonnes.

In 2002, the Commission endorsed the delineation of Small-Scale Management Units (SSMUs; Fig. 4) proposed by the Scientific Committee and agreed that these units be used as a basis on which to subdivide the precautionary catch limit for krill in Area 48 (CCAMLR-XXI, paragraphs 4.5 and 4.6).

In 2007, CCAMLR agreed Conservation Measure 51-01 (2007) in which it revised the catch limit in Area 48 to 3.47 million tonnes in any fishing season, based on a reanalysis of the large scale survey from 2000 and a revised parametrisation of the yield model. It also introduced the term “trigger level” and stated that the total combined catch in Subareas 48.1, 48.2, 48.3 and 48.4 would be limited to a “trigger level” of 620,000 tonnes in any fishing season until the Commission defined an allocation of this total catch limit between smaller management units, based on the advice from the Scientific Committee.

In 2009, following extensive discussion in the Scientific Committee, CCAMLR agreed Conservation Measure 51-07 (2009) that created a distribution of the 620,000 tonne trigger level (specified in Conservation Measure 51-01 (2010)) such that no more than 25% can be taken from Subarea 48.1, no more than 45% can be taken from Subarea 48.2 and Subarea 48.3 and no more than 15% from Subarea 48.4. These percentages deliberately sum to more than 100% in order to provide flexibility to the fishery while achieving the objective of distributing fishing effort. These limits were in force up to the end of the 2024 fishing season.

In 2024, following extensive discussions by the Scientific Committee (SC-CAMLR-43, paragraphs 2.2, 2.18–2.113) and the Commission (CCAMLR-43, paragraphs 4.13–4.44), the Commission did not reach consensus to extend Conservation Measure 51-07 for one year for the fourth consecutive year, and it therefore expired at the end of the 2024 fishing season (CCAMLR-43, paragraph 4.45). As such, starting in the 2025 fishing season, the total catch in Subareas 48.1–48.4 combined is limited to 620,000 tonnes (Conservation Measure 51-01) without further spatial distribution of the trigger level.

In 2025, following the unprecedented closure of the fishery due to reaching the trigger level, extensive discussions by the Scientific Committee (SC-CAMLR-44, paragraphs 2.13–2.52) and the Commission (CCAMLR-44, paragraphs 4.3–4.69) attempted to integrate revised catch limits, increased monitoring, and components of the proposed DIMPA in a staged manner to reduce the spatial concentration of the fishery. The Commission was unable to reach consensus on a revised conservation measure (CCAMLR-44, paragraph 4.56).

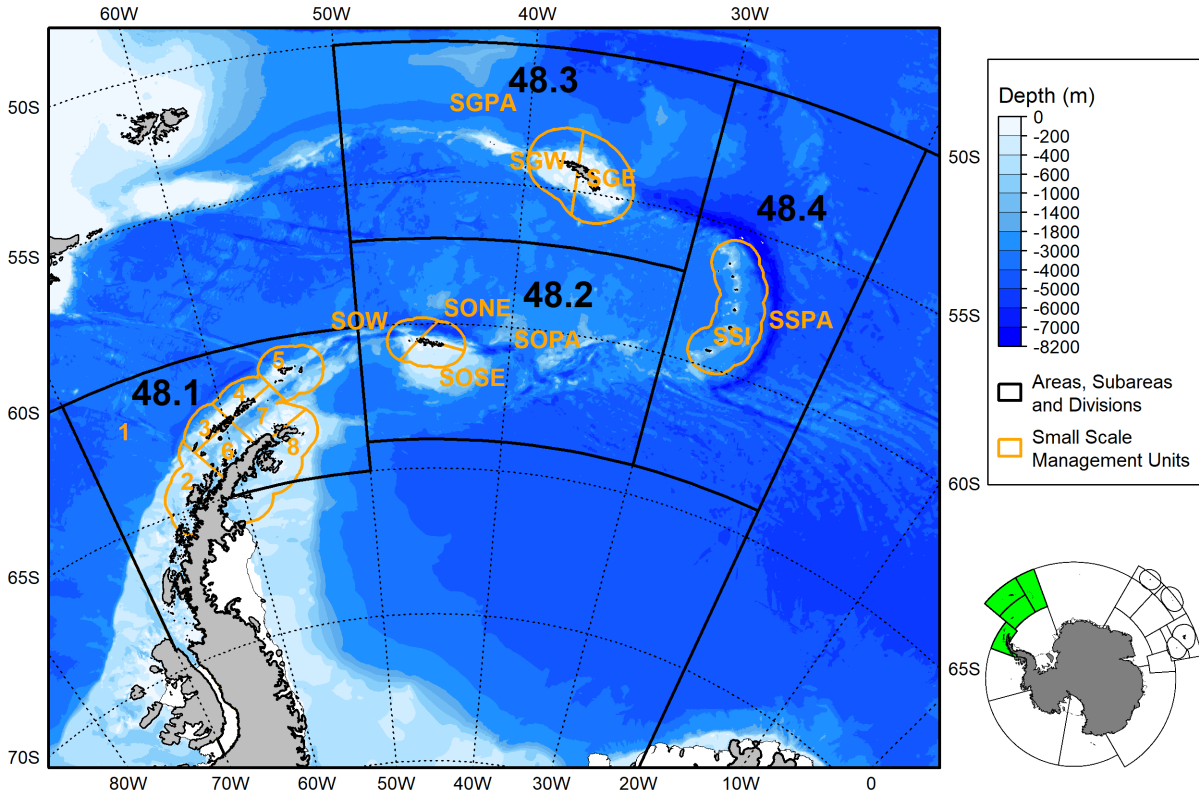


Figure 4. Location of Small-Scale Management Units in Area 48. In Subarea 48.1: 1. Pelagic Area (APPA), 2. Antarctic Peninsula West (APW), 3. Drake Passage West (APDPW), 4. Drake Passage East (APDPE), 5. Elephant Island (APEI), 6. Bransfield Strait West (APBSW), 7. Bransfield Strait East (APBSE), 8. Antarctic Peninsula East (APE). These are grouped into 481PA (1), 481N (2, 3, 4 and 5) and 481S (6, 7 and 8) for the aggregation of length frequency distributions of krill (following the recommendation of WG-EMM-15; SC-CAMLR-XXXIV, Annex 6, paragraph 2.10). In Subarea 48.2: South Orkney Pelagic Area (SOPA), South Orkney West (SOW), South Orkney Northeast (SONE), South Orkney Southeast (SOSE). In Subarea 48.3: South Georgia Pelagic Area (SGPA), South Georgia West (SGW), South Georgia East (SGE). In Subarea 48.4: South Sandwich Pelagic Area (SSPA), South Sandwich Islands (SSI). Coastlines and ice shelves: UK Polar Data Centre/BAS and Natural Earth. Bathymetry: GEBCO. Projection: EPSG 6932 (rotated).

1.2. Conservation Measures currently in force

The limits on the fishery for krill in Area 48 during the 2025 fishing season are summarised in Table 1. The same provisions apply for the fishery for krill in Divisions 58.4.1 and 58.4.2, with the exception of the catch limits that are specified in Conservation Measures 51-02 and 51-03.

Table 1. Summary of CCAMLR limits in force and related Conservation Measures (CMs) for the krill fishery in Subareas 48.1, 48.2, 48.3 and 48.4.

Element	Limits in force
Target species	The target species is <i>Euphausia superba</i> and any species other than <i>Euphausia superba</i> is by-catch
Access (gear)	Trawling only
Notification	All Members intending to fish for krill must notify the Commission in accordance with CM 21-03
Catch limit	The total combined catch in Statistical Subareas 48.1, 48.2, 48.3 and 48.4 shall be limited to 5.61 million tonnes in any fishing season (CM 51-01).
Trigger level	The total combined catch in Statistical Subareas 48.1, 48.2, 48.3 and 48.4 shall be further limited to 620 000 tonnes in any fishing season (CM 51-01).
Move-on rule	No move-on rules apply
Season	1 December to 30 November of the following year
By-catch	By-catch rates as in CM 33-01 apply in Subarea 48.3
Bird and mammal mitigation	Specific advice requirements in accordance with CM 25-03 and CM 51-01
Observers	Scientific observers should be deployed on vessels in accordance with CM 51-06
Data	Monthly and or five-day catch and effort reporting Haul-by-haul catch and effort data Data reported by the CCAMLR scientific observer
Research	No specific requirement
Environmental protection	Regulated by CM 26-01 during fishing operations

1.3. Active vessels

In 2025, 12 vessels fished in at least one of the three Subareas 48.1, 48.2 and 48.3 (Table 3).

Fishing notifications for next season Members intending to participate in established fisheries for krill in the 2026 fishing season (in Subareas 48.1, 48.2, 48.3 and 48.4 and Divisions 58.4.1 and 58.4.2) had to notify the Commission no later than 1 June 2025. The procedures for krill fishery notification submissions are described in Conservation Measure [21-03](#). For the 2026 Season, 6 Members notified their intention to fish for krill with a total of 15 vessels (Table 2); these notifications are often subject to revisions/withdrawals of vessels and the most up-to-date information can be found [notifications webpage](#).

Table 2. Notifications (N) and subsequent withdrawals (W) of intention to fish for krill in 2026 by Sub-area/Division.

Vessel Name	Member	Subarea 48.3	Subarea 48.1	Subarea 48.2	Subarea 48.4
Antarctic Endeavour	Chile	N	N	N	
Fu Yuan Yu 9199	China	N	N	N	N
Shen Lan	China	N	N	N	N
Hua Xiang 9	China	N	N	N	N
Fu Xing Hai	China	N	N	N	N
Long Fa	China	N	N	N	N
Yong Li	China	N	N	N	N
Sejong	Korea, Republic of	N	N	N	
Sae In Leader	Korea, Republic of		N	N	
More Sodruzhestva	Namibia	N	N	N	
Saga Sea	Norway	N	N	N	N
Antarctic Endurance	Norway	N	N	N	N
Antarctic Sea	Norway	N	N	N	N
Antarctic Navigator	Norway	N	N	N	N
More Sodruzhestva	Ukraine	N	N	N	
Total Members		6	6	6	2
Total Vessels		13	14	14	10
Total Withdrawn		0	0	0	0

1.4. Catch and effort reporting

Aggregated catch and effort reporting in the krill fishery is on a 5-day basis, where reports of catch and effort in one 5-day period must be provided within 2 days of the end of that 5-day period. These data are used to monitor the progress of the fishery and to close the fishery as the catch limit is reached.

Detailed information for each haul in the krill fishery, including location, time, target and non-target catch is provided in the C1 reporting forms (with data required to be submitted by the end of the month following data collection). In order to accommodate data from the continuous fishing system, in a format that is compatible with the reporting system for conventional trawling, catches are reported in ‘haul intervals’ of two hours for the entire period that the trawl is in the water.

2. Reported catch

2.1. Latest reports and limits

In 2024 a total 498350 tonnes of *E. superba* was caught from Subareas 48.1, 48.2 and 48.3. In 2025 a total 624918 tonnes of *E. superba* was caught from Subareas 48.1, 48.2 and 48.3 (Tables 3–6).

Table 3. Recent catch and effort history for *E. superba* by Subarea.

Season	Subarea 48.1		Subarea 48.2		Subarea 48.3		Total	
	Catch (tonnes)	Number of vessels	Catch (tonnes)	Number of vessels	Catch (tonnes)	Number of vessels	Catch (tonnes)	Number of vessels
2000	76984	11	16932	8	19346	5	113262	11
2001	52322	7	4998	4	35730	6	93050	7
2002	10700	4	54973	6	39912	7	105585	7
2003	32694	7	16940	7	66159	9	115793	9
2004	15643	7	48192	8	56144	10	119979	10
2005	7096	6	72262	9	48460	7	127818	9
2006	90570	8	3112	4	14901	3	108583	8
2007	15971	6	68021	5	20736	5	104728	6
2008	2582	2	88805	5	57629	7	149016	8
2009	34118	6	91588	7	0	2	125706	7
2010	154330	9	50492	9	8834	2	213656	10
2011	9215	9	115995	12	55801	6	181011	13
2012	75832	12	28997	5	56415	5	161244	12
2013	153252	11	30577	8	32221	7	216050	12
2014	146438	12	72455	10	75252	7	294145	12
2015	154177	12	17101	6	54354	7	225632	12
2016	154441	11	34301	6	71407	6	260149	12
2017	149334	9	69046	6	18558	6	236938	10
2018	151691	9	137880	7	23174	5	312745	9
2019	155795	10	162574	10	71799	5	390168	10
2020	157081	12	178382	12	115318	9	450781	12
2021	161772	12	209754	10	0	2	371526	12
2022	143413	9	192201	10	79894	4	415508	10
2023	153587	9	184836	8	85780	5	424203	9
2024	164641	12	176789	11	156920	8	498350	12
2025	359266	12	260630	11	5022	1	624918	12

Table 4. Monthly catch (tonnes) history for *E. superba* by Subarea in fishing season 2024.

Month	Subarea			Total
	48.1	48.2	48.3	
December		7326		7326
January		47513		47513
February	1050	70716		71766
March	26330	51095		77425
April	80067			80067
May	57194	28	296	57518
June			29788	29788
July			55977	55977
August			52264	52264
September			18595	18595
October		110		110
Total	164641	176789	156920	498349

Table 5. Monthly catch (tonnes) history for *E. superba* by Subarea in fishing season 2025.

Month	Subarea			Total
	48.1	48.2	48.3	
December	23808	261		24069
January	20455	31338		51794
February	46	79795		79841
March	7064	105863		112927
April	48712	39245		87957
May	79986			79986
June	78577	4127	1392	84096
July	97741		3471	101212
August	2878		158	3036
Total	359266	260630	5022	624917

Table 6. Catch (tonnes) of *E. superba* by Subarea and Member in fishing season 2025.

Member	Subarea			Total
	48.1	48.2	48.3	
Chile	4225	10788	5022	20035
China	160344	70739	0	231083
Republic of Korea	18661	9961	0	28622
Norway	171003	155304	0	326307
Ukraine	5033	13838	0	18871
Total	359266	260630	5022	624917

2.2. By-catch

Fish by-catch data are available from vessel-reported haul-by-haul data as well as from observer data. Detailed information on the fish by-catch reported from the krill fishery was provided in [WG-FSA-2022/03](#). SISO observers periodically collect a 25kg sample of the catch for a subset of hauls. They then remove all fish from that sample, identify them to the finest taxonomic level possible, record the total length for each fish and the total mass for each taxon. The total by-catch by species in the haul-by-haul data are reported in the ‘fine-scale catch and effort (C1)’ forms as specified in Conservation Measure [23-04](#). There are no by-catch limits in place for the krill fishery (although Conservation Measure [33-01](#) applies in Subarea 48.3).

The relative frequency of fish by-catch in the C1 data is lower than in the SISO data, reflecting the practicalities of the more detailed sampling performed by the scientific observers (Fig. 5). It is important to note that these trends may be affected by changes in data collection requirements (see section 4.1).

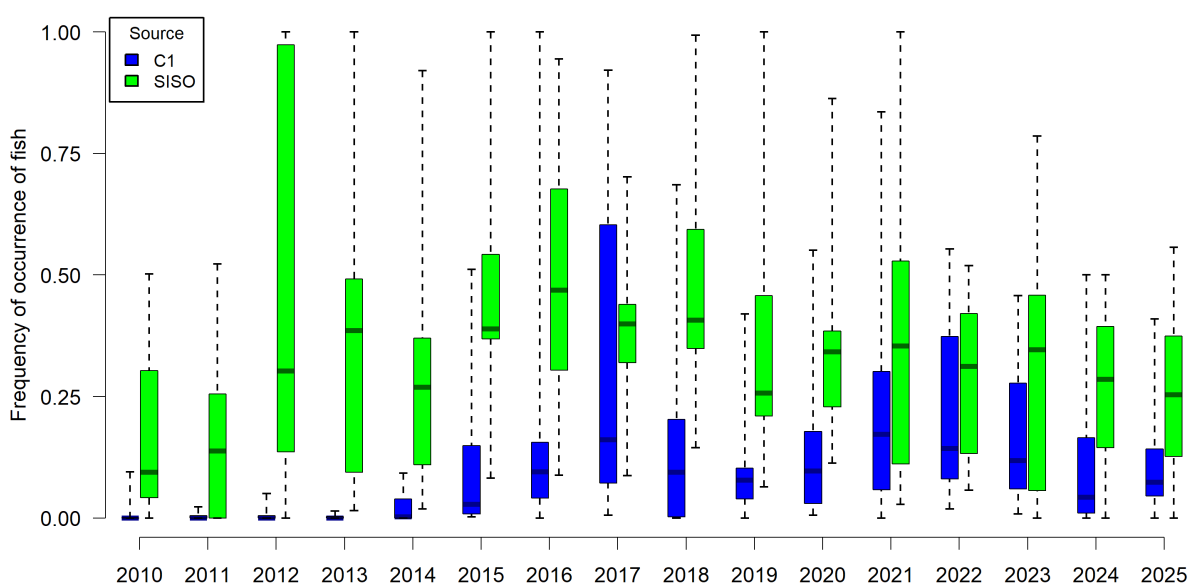


Figure 5. Frequency of occurrence of fish by-catch reported in the C1 data (excluding hauls that also have SISO data; blue) and in the SISO data (green) since 2010.

In 2022, an analysis of recent trends in finfish by-catch from the krill fishery in Area 48 ([WG-FSA-2022/22](#)) indicated that finfish by-catch and species composition was variable throughout the time series, though by-catch has increased in recent years with increasing krill catches in Area 48. [WG-FSA-2022](#) (paragraph 6.2) noted that the increase in total by-catch and number of species recorded may be influenced by increased observer coverage and improvements in species identification in recent years.

Using the data collected by scientific observers (from 25kg sub-samples of the catch) and scaling it up to the total catch of those hauls, observer-derived by-catch weights may be estimated ([WG-FSA-2023/73](#)). Doing so after separating species indicates that mackerel icefish (*Champsocephalus gunnari*) is commonly caught in Subarea 48.2, Painted notie (*Nototheniops larseni*) is commonly caught in Subarea 48.3, and, fish by-catch in Subarea 48.1 is more diverse, often including *C. gunnari*, Antarctic silverfish (*Pleuragramma antarctica*), and ocellated icefish (*Chionodraco rastrospinosus*) (see Figs. 6-9). It is important to note that these estimates do not account for by-catch that may have occurred in hauls that were not sampled by observers.

In 2023, WG-FSA noted that by-catch rates are relatively similar between fishing methods (continuous and traditional), and that the by-catch of fish in the krill fishery is characterised by the occurrence of sporadic and localized large by-catch events ([WG-FSA-2023](#), paragraph 5.11).

In 2024, WG-FSA discussed analytical approaches to extrapolating by-catch data to estimate total by-catch, including when no observer data is collected ([WG-FSA-IMAF-2024](#), paragraphs 5.10–5.16). The Scientific Committee distributed a questionnaire to vessel operators to better understand current by-catch sampling processes and how these may influence the data reported in the C1 data and by observers ([SC-CAMLR-43](#), paragraphs 4.1–4.4).

In 2025, WG-FSA adopted a new method to upscale by-catch records from observers without using crew-reported by-catch ([WG-FSA-2025](#), paragraphs 6.27–6.31). In addition, the Working Group agreed to a trial methodology tasking the crew with collecting by-catch from subsamples of the catch, similar to current SISO methodology ([WG-FSA-2025](#), paragraphs 6.34–6.39 and Figure 2). The Scientific Committee subsequently discussed and endorsed this trial methodology ([SC-CAMLR-44](#), paragraphs 4.2–4.7).

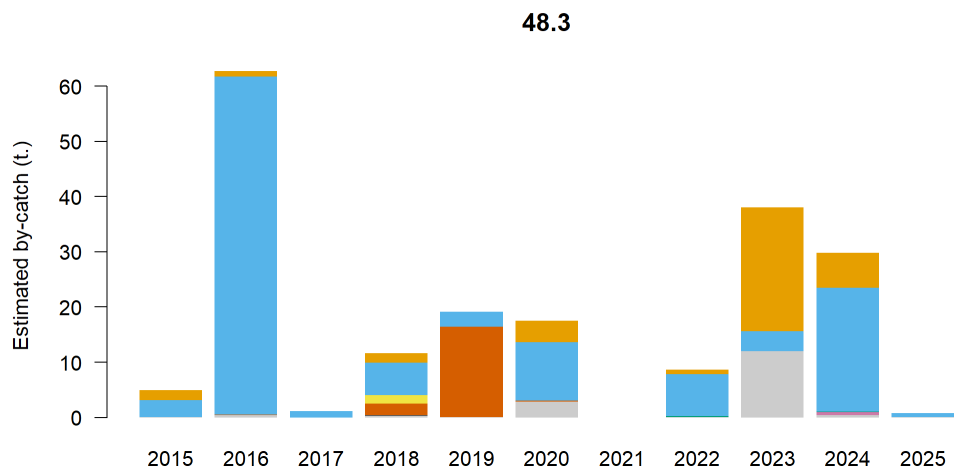
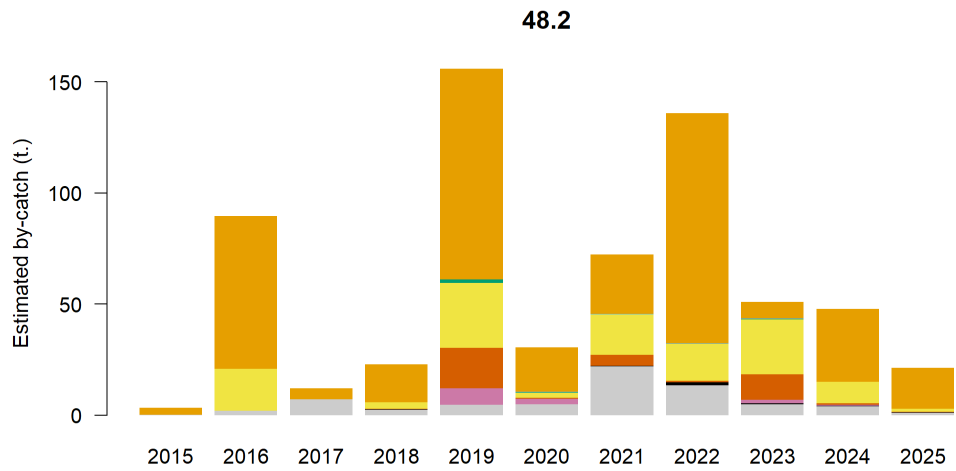
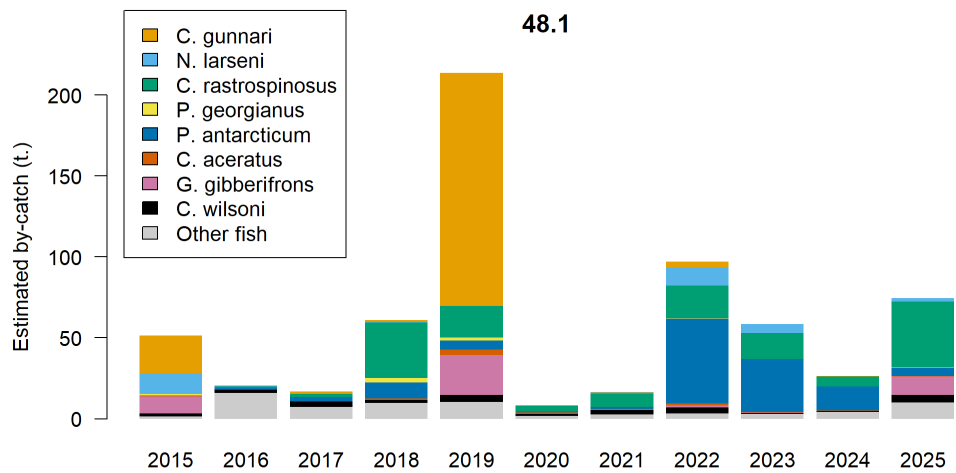


Figure 6. Estimated by-catch of fish (tonnes) since 2015 in each Subarea, using the SISO data (inspected hauls only). The eight most common species are color-coded.

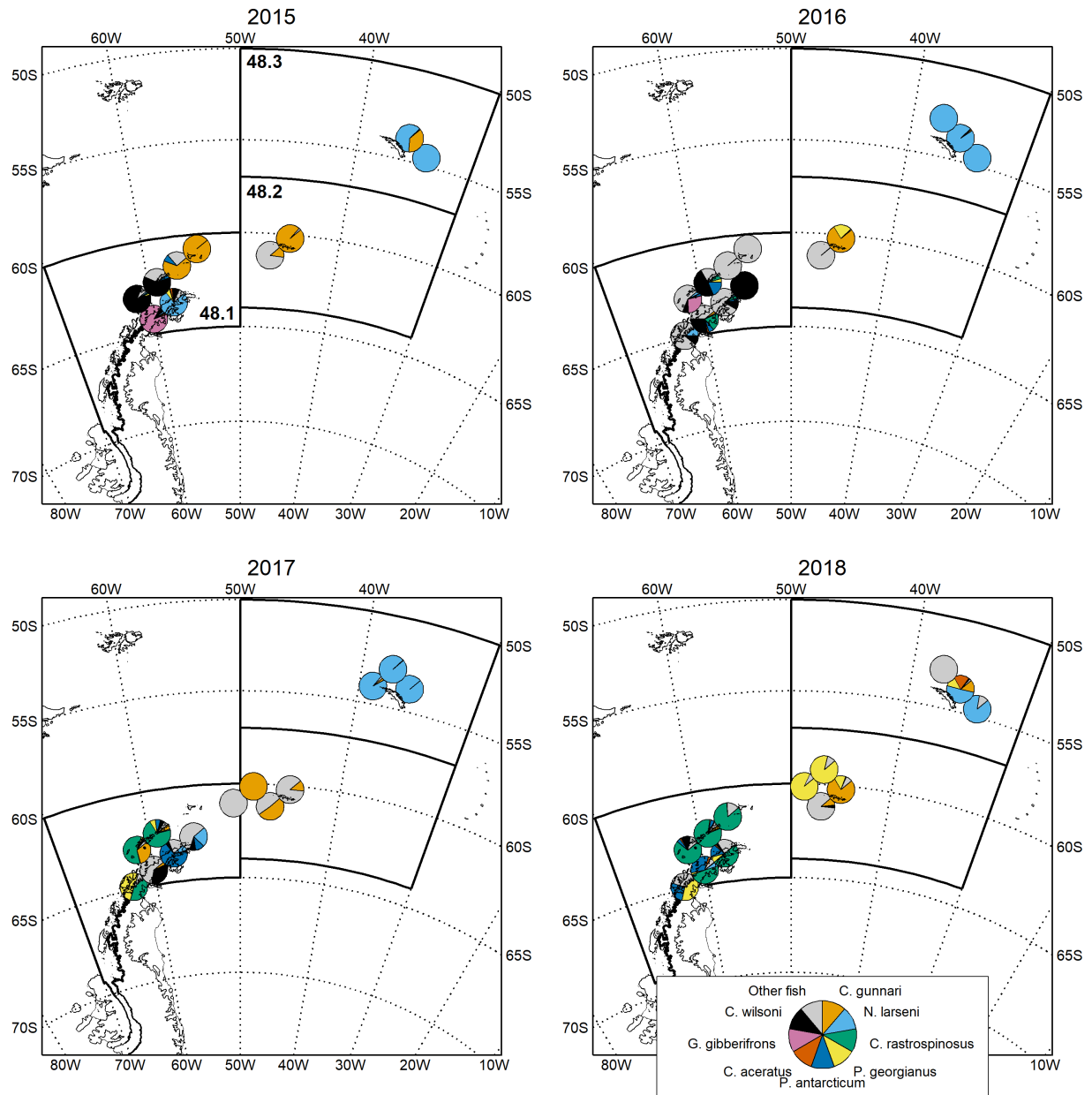


Figure 7. Distribution of estimated by-catch weight proportions for dominant fish species from the SISO data for 2015-2018 (inspected hauls only). Records were pooled in 150 km grid cells prior to computing proportions. Coastlines and ice shelves: UK Polar Data Centre/BAS and Natural Earth. Projection: EPSG 6932 (rotated).

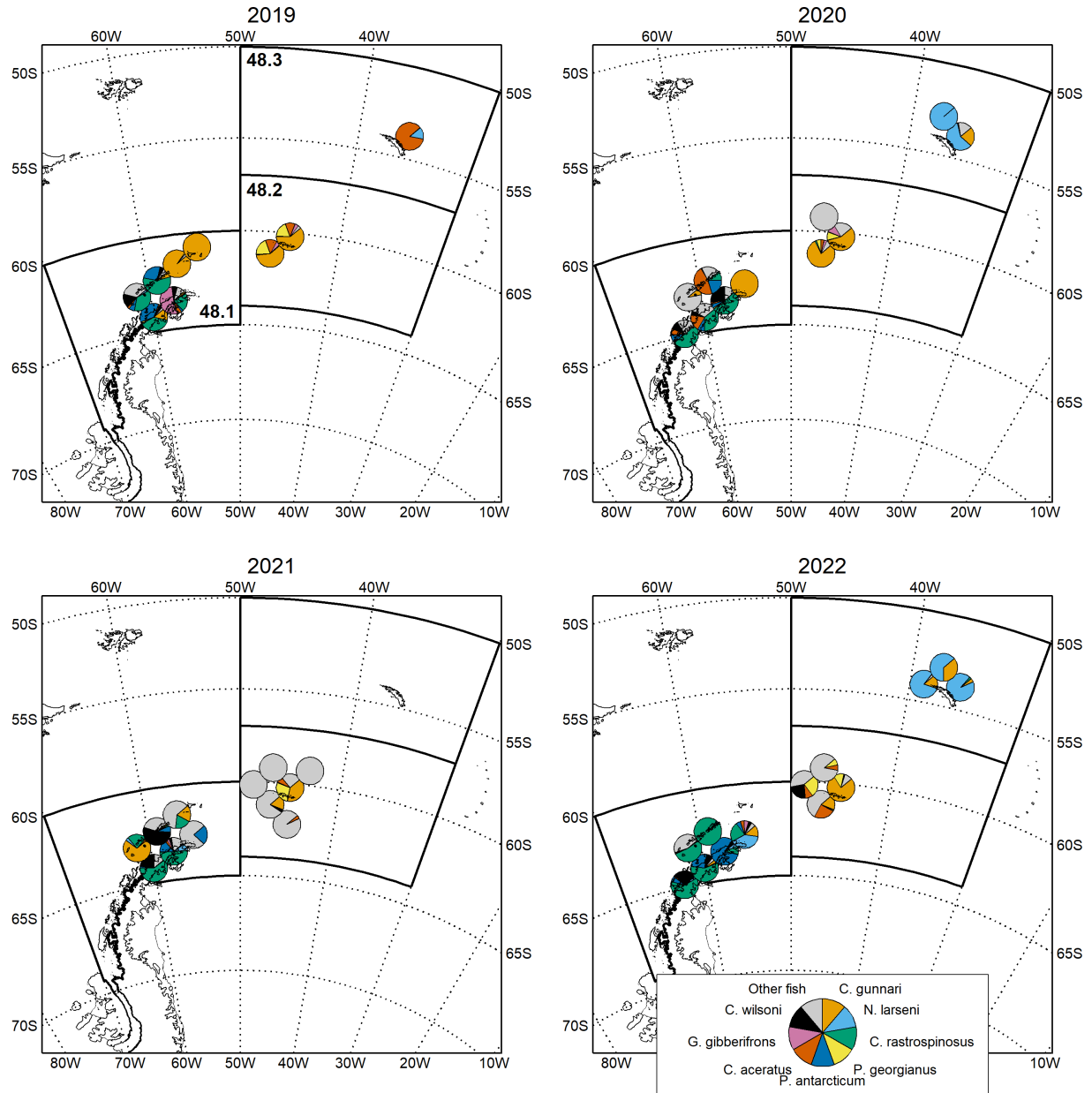


Figure 8. Distribution of estimated by-catch weight proportions for dominant fish species from the SISO data for 2019-2022 (inspected hauls only). Records were pooled in 150 km grid cells prior to computing proportions. Coastlines and ice shelves: UK Polar Data Centre/BAS and Natural Earth. Projection: EPSG 6932 (rotated).

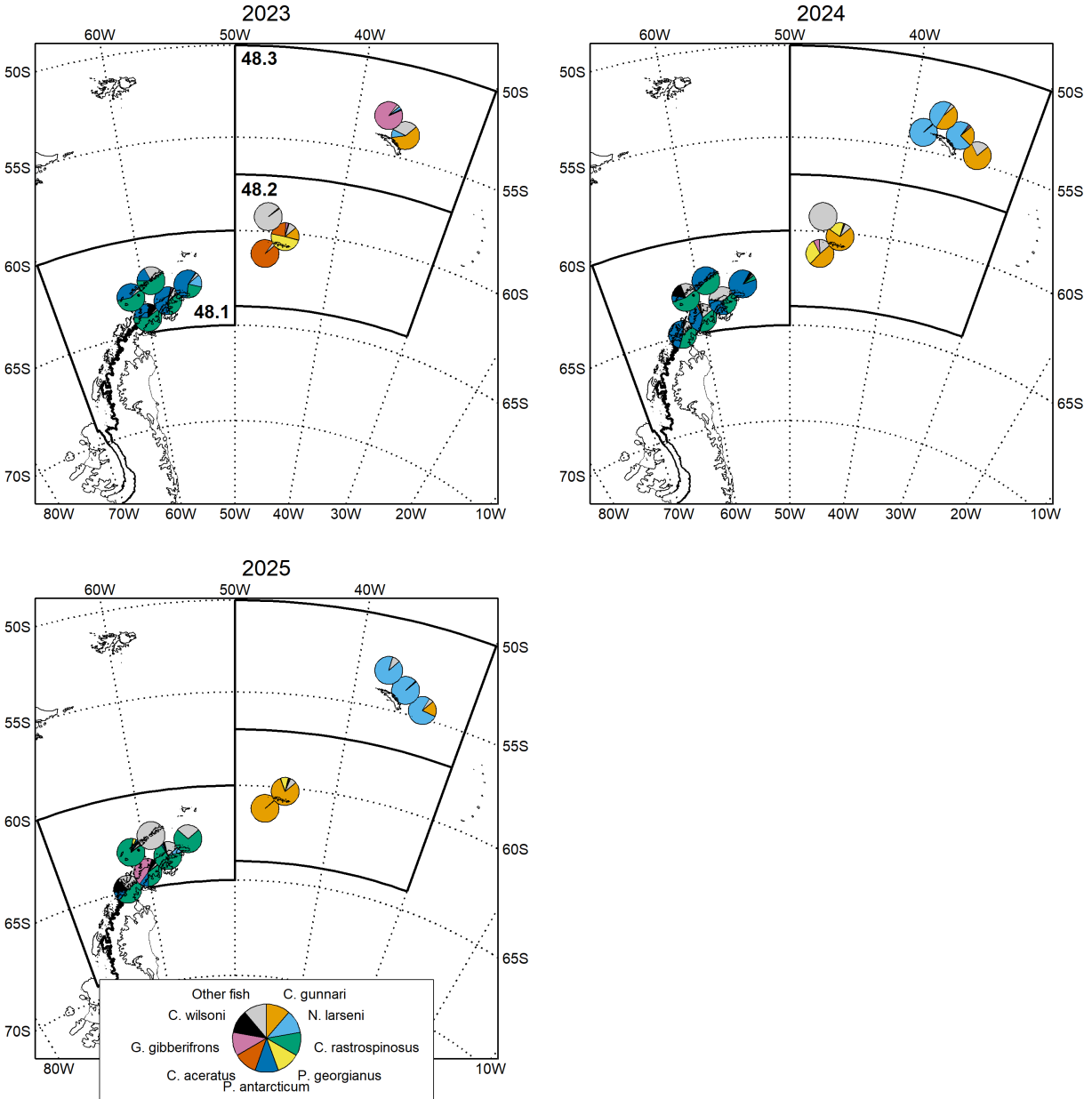


Figure 9. Distribution of estimated by-catch weight proportions for dominant fish species from the SISO data since 2023 (inspected hauls only). Records were pooled in 150 km grid cells prior to computing proportions. Coastlines and ice shelves: UK Polar Data Centre/BAS and Natural Earth. Projection: EPSG 6932 (rotated).

2.3. Incidental mortality of seabirds and marine mammals

Seabirds

Since 2010, the majority of bird mortalities reported from the krill fishery were Cape petrel (*Daption capense*) and Snow petrel (*Pagodroma nivea*) (Table 7). These reports do not include incidents resulting from warp strikes (when birds collide with or are struck by trawl warps) which may induce varying levels of injury (e.g., [WG-FSA-IMAF-2024](#), paragraph 5.66; [SC-CAMLR-43](#), paragraphs 4.5 and 4.6).

Table 7. Number of reported birds caught (killed or with injuries likely to substantially reduce long-term survival) in this fishery since 2010 in each Subarea.

Season	<i>Daption capense</i>	<i>Pagodroma nivea</i>	Other
Subarea 48.1			
2012	1		
2016	1		2
2017			1
2018		1	
2021	15	1	3
2024			1
Subarea 48.2			
2016			1
2017			1
2018	1		
2019	2		
2021	1	37	2
2022			3
2023			1
2024	3		
Subarea 48.3			
2020			1
2023			1

Marine mammals

Prior to 2003, no incidental fur seal catches had been reported from the krill fishery. In 2003, discussions on Antarctic fur seal mortality associated with the krill fishery first took place in the Working Group on Incidental Mortality Associated with Fishing ([WG-IMAF](#)). This was prompted by information included in the Report of Members' Activities that in the krill fishery in Area 48, between 13 March and 26 August 2003, 73 Antarctic fur seals had been caught by one vessel in the krill fishery (of which 26 were killed and 47 were released alive). [WG-IMAF](#) recommended that vessel operators and researchers collaborate to develop and implement mitigation methods and requested that the Scientific Committee address how best to arrange appropriate reporting from the krill fishery ([SC-CAMLR-XXII](#), Annex 5, paragraph 6.231).

In 2004, data collected as part of [SISO](#) indicated that 292 fur seals were caught in Subarea 48.3. Some Members investigated and documented the use of mitigation devices to reduce seal entrapment in krill trawl nets and reported on the efficacy of seal-exclusion devices ([SED](#)). The Commission endorsed a recommendation by the Scientific Committee that a description of all methods be compiled into one document and distributed amongst CCAMLR Members ([CCAMLR-XXIII](#), paragraph 5.20). [WG-IMAF](#) also discussed the apparent inconsistencies and inadequacies of observer data on incidental mortality of fur seals and recommended the Commission require all krill trawl vessels to carry an observer to improve bycatch mitigation management efforts ([SC-CAMLR-XXIII](#), Annex 5, paragraph 7.236).

In 2005, the number of seals observed captured in Area 48 was reduced to 97, however, the Scientific Committee reiterated its recommendations that every krill fishing vessel should employ an [SED](#) and that observers should be required on krill trawl vessels to collect reliable data on mortalities and efficacy of mitigation devices ([SC-CAMLR-XXIV](#), paragraphs 5.41i and ii). Observer reports were only received from four of nine trawl vessels in Area 48 in 2005 and this level of observer coverage was considered insufficient to estimate the total seal mortality in the fishery. [WG-IMAF](#) again recommended 100% coverage on all krill

trawl vessels. One fur seal was captured in each of 2006 and 2007, although the level of observer coverage remained less than 100%. The Scientific Committee stressed the continued need for monitoring of incidental mortalities and for an improved reporting process on the use of mitigation devices within the trawl fishery in order to document which measures were successful ([SC-CAMLR-XXVI](#), paragraph 5.13).

In 2008, six seal mortalities were observed in Subarea 48.3 and the Scientific Committee suggested the krill fishery notification pro forma should be amended to include specific information on gear configurations such as mesh size, net opening, presence and design of mammal exclusion devices ([SC-CAMLR-XXVII](#), paragraph 4.11). The Commission agreed to amend the general mitigation provisions in Conservation Measure [25-03](#) to introduce the mandatory use of mammal exclusion devices on trawls in the krill fisheries in Area 48 (Conservation Measure [51-01](#)) and Divisions 58.4.1 (Conservation Measure [51-02](#)) and 58.4.2 (Conservation Measure [51-03](#)). These Conservation Measures were adopted by the Commission and are still in force.

Since 2010, there were, notably, 19 mortalities of Antarctic fur seals (*A. gazella*) in 2018 (Table 8) which occurred on the same vessel as a result of a malfunction in the mammal exclusion devices (or [SED](#)); once the issue was identified and rectified there were no further seal mortalities on that vessel. In 2020, a total of 16 fur seal mortalities were recorded, although unlike in 2018, these were recorded across five vessels with no single cause for the entanglements identified.

In 2021, three humpback whales (*M. novaeangliae*) were recorded as bycatch in krill trawls (the first recorded cetacean mortalities observed in the krill fishery) in Subareas 48.1 and 48.2 ([SC-CAMLR-40](#), paragraphs 3.113–3.136), noting that many of the bird mortalities reported in that year were associated with the hauls that caught whales due to entanglements with the net. The Scientific Committee reconvened the Working Group on Incidental Mortality Associated with Fishing ([WG-IMAF](#)) to better understand and mitigate any issues contributing to humpback whale and seal by-catch in the krill fishery ([CCAMLR-40](#), paragraph 6.47).

In 2022, one humpback whale (*M. novaeangliae*) was recorded as by-catch in krill trawls in Subareas 48.2. [WG-IMAF](#) discussed these four events and proposed mitigation measures as well as future data collection protocols ([WG-IMAF-2022](#), paragraphs 4.7–4.17).

In 2024, two mortalities of humpback whales (*Megaptera novaeangliae*) were recorded, and one individual was released alive with noted injuries ([WG-FSA-IMAF-2024](#), paragraphs 5.26, 5.35–5.39).

In 2025, one mortality of humpback whale (*Megaptera novaeangliae*) was recorded in Subarea 48.2. The vessel was operating at the time with no cetacean exclusion device (CED), only a seal exclusion device. The vessel consequently acquired a CED and used it for the remainder of the fishing season ([WG-EMM-2025](#), paragraphs 3.33 and 3.34).

Table 8. Number of reported mammal mortalities in this fishery since 2010 in each Subarea.

Season	<i>Megaptera novaeangliae</i>	Otariidae, Phocidae	<i>Arctocephalus gazella</i>
Subarea 48.1			
2011		1	
2021	2		
2024	1		
Subarea 48.2			
2021	1		1
2022	1		
2024	1		
2025	1		
Subarea 48.3			
2016		2	1
2018			19
2019			1
2020			16
2023			1

2.4. Estimation of krill green weight

At its meeting in 2008, the Working Group on Ecosystem Monitoring and Management ([WG-EMM](#)) considered how the actual catches of krill are reported as the mass of product multiplied by a conversion factor to estimate the ‘green weight’ and expressed its concern over the inconsistency in the way the amount of krill removed from the ecosystem may be recorded. Conversion factors were reported from some vessels, either as pre-determined product-specific values or varying according to ongoing evaluation on the vessel. Given the different on-board processing methods used by vessels, and the resulting range of conversion factors used in the krill fishery, the need to document how the estimates of green weight are derived is important to accurately determine the true biomass of krill removed from the ecosystem.

In 2011, the Scientific Committee noted that there were several sources of uncertainty in estimating the green weight of krill that required further investigation ([SC-CAMLR-XXX](#), paragraph 3.15). In order to progress analyses of uncertainty in green weight, the specific details of the method used for estimating catch on all krill vessels was included in the notification process and made a reporting requirement during fishing activities.

In 2013, revised guidelines for estimating krill green weight and reporting relevant parameters were introduced ([SC-CAMLR-XXXII](#), paragraph 3.7). Consequently, Annex [21-03/B](#) was revised and the “fine scale catch and effort” data form (C1) were updated to enable monthly reporting as specified by Conservation Measure [23-04](#).

Given its importance to estimating total removals of krill by the fishery, green weight estimation remains a topic of interest to the Scientific Committee, as discussed in 2014 ([SC-CAMLR-XXXIII](#), paragraphs 3.4 and 3.5), 2015 ([SC-CAMLR-XXXIV](#), paragraph 3.8), 2019 ([SC-CAMLR-38](#), paragraph 3.4) and 2021 ([SC-CAMLR-40](#), paragraphs 3.5 and 3.24(i)(e)).

3. Illegal, Unreported and Unregulated (IUU) fishing

Illegal, Unreported and Unregulated ([IUU](#)) fishing for krill has not been reported to date.

4. Data collection

4.1. Data collection requirements

The implementation of the CCAMLR Scheme of International Scientific Observation (SISO) in the krill fishery has been the subject of extensive discussion in the Scientific Committee and Commission meetings (see [WG-EMM-14/58](#), Annex 1). The development of a program for systematic observer coverage in the krill fishery was first implemented in 2010 (Conservation Measure [51-06 \(2009\)](#)). In 2016, the Commission agreed to revise Conservation Measure [51-06](#) to introduce a phased increase in the required observer coverage in the krill fishery to achieve a target coverage rate of no less than 50% of vessels during the 2017 and 2018 fishing seasons; no less than 75% of vessels during the 2019 and 2020 fishing seasons; and 100% coverage in subsequent fishing seasons.

The Scientific Committee agreed that, to provide a measure of the availability of observer data, observer coverage in the krill fishery should be defined as the number of days when an observer was on a krill fishing vessel as a percentage of the days fished. Since 2010 observer coverage has increased over time with some Subareas routinely achieving 100% observer coverage (Table 9).

Table 9. Percent observer coverage, calculated as the total number of days with an observer on board a krill fishing vessel as a percentage of the total number of days fished by all vessels, in Subareas 48.1, 48.2 and 48.3 since 2006.

Season	Subarea		
	48.1	48.2	48.3
2006	16	0	47
2007	17	36	31
2008	84	36	36
2009	10	54	100
2010	64	86	100
2011	81	76	96
2012	84	65	100
2013	96	83	71
2014	97	95	100
2015	89	92	100
2016	100	100	86
2017	65	87	100
2018	98	96	100
2019	100	100	100
2020	100	97	100
2021	100	100	100
2022	100	100	100
2023	100	100	100
2024	100	100	100
2025	100	100	100

The increase in scientific observer data available from the krill fishery has provided a basis for greater specification of sampling requirements, including those on the length, sex and maturity stage of krill, fish by-catch and the collection of acoustic data on krill.

In 2025, the Scientific Committee endorsed the sampling plans proposed by WG-EMM to support the implementation of the revised Krill Fishery Management Approach ([SC-CAMLR-44](#), paragraph 2.72).

4.2. Summary of available data

Both the vessel’s crew and observers collect by-catch information. The vessel’s crew report total catch of by-catch by coarse taxonomic groups given their limited ability to discriminate similar species. Observers collect biological information on krill and by-catch specimens at a finer taxonomic resolution, as well as data on individual specimens such as size and maturity.

Summaries of data recently reported to CCAMLR are given in Tables 10 and 11. Since the vessel’s crew record by-catch on all hauls while observers inspect sub-samples of random hauls, the crew tends to identify more taxa than observers (Table 10). In 2021, in Subarea 48.3 (Table 10), catches were negligible and no catch was recorded or processed by the vessel’s crew. Krill biological and by-catch data were recorded by the observer from the small amounts of krill collected from the net and deck after test hauls. The small amounts of catch were discarded after hauling was complete.

Table 10. Summary of by-catch and biological data reported by vessels crew and observers (from 25kg random sub-samples of the catch) in each of the last five seasons, per Subarea. By-catch records correspond to the number of observations of total weight and count of individuals for each taxon identified. Observers also measure the length of each krill specimen and some by-catch specimens, and, in most cases determine krill maturity stage and sex. Taxonomic identification may occur at different levels.

Data source	Data class	Variable	2021	2022	2023	2024	2025
Subarea 48.1							
Vessel crew	by-catch	taxa identified	52	44	39	34	47
		records	6449	4668	1691	1915	2777
Observer	Antarctic krill	specimens examined	134778	99695	60817	97833	242777
	by-catch	taxa identified	41	40	32	29	46
		records	1135	2029	1298	1369	3292
		length measurements	2080	11141	6295	3669	3747
Subarea 48.2							
Vessel crew	by-catch	taxa identified	68	38	37	39	40
		records	4785	1756	2907	2109	2137
Observer	Antarctic krill	specimens examined	77941	99200	90275	71405	90949
	by-catch	taxa identified	58	48	41	30	37
		records	2259	1826	1488	861	722
		length measurements	5018	4722	1707	702	473
Subarea 48.3							
Vessel crew	by-catch	taxa identified	0	19	27	25	11
		records	0	282	275	482	33
Observer	Antarctic krill	specimens examined	400	13000	11800	90000	2000
	by-catch	taxa identified	14	26	34	33	11
		records	25	612	629	1518	185
		length measurements	39	1996	913	6912	988

Table 11. Summary of by-catch and biological data for predominant by-catch groups reported by observers (from 25kg random sub-samples of the catch) in each of the last five seasons, per Subarea. By-catch records correspond to the number of observations of total weight and count of individuals for each taxon identified. Observers also measure the length of some specimens. Taxonomic identification may occur at different levels.

By-catch group	Variable	2021	2022	2023	2024	2025
Subarea 48.1						
Icelandic fish	taxa identified	14	10	11	10	12
	records	701	688	421	426	828
	length measurements	1312	3799	1010	1058	2164
Other fish	taxa identified	34	29	25	23	28
	records	993	1380	1009	846	1185
	length measurements	2035	10983	5256	3419	3190
Salps	taxa identified	1	1	1	1	1
	records	76	486	133	448	1385
	length measurements	41	120	1037	244	550
Subarea 48.2						
Icelandic fish	taxa identified	12	9	9	8	9
	records	756	234	587	169	128
	length measurements	4112	803	1571	554	307
Other fish	taxa identified	44	29	27	19	22
	records	1139	412	668	243	195
	length measurements	4976	1230	1697	679	396
Salps	taxa identified	1	1	1	1	1
	records	170	693	98	116	281
	length measurements	25	3398	1	21	66
Subarea 48.3						
Icelandic fish	taxa identified	0	6	1	6	2
	records	0	27	16	41	3
	length measurements	0	46	49	117	3
Other fish	taxa identified	6	15	19	21	7
	records	8	236	239	606	99
	length measurements	39	1983	906	6909	988
Salps	taxa identified	1	1	1	1	1
	records	2	28	18	8	2
	length measurements	0	0	0	0	0

4.3. Length frequency distributions

The length frequency distributions of krill reported by observers in Subareas 48.1, 48.2 and 48.3 for recent fishing seasons show interannual variability among seasons and areas (Fig. 10).

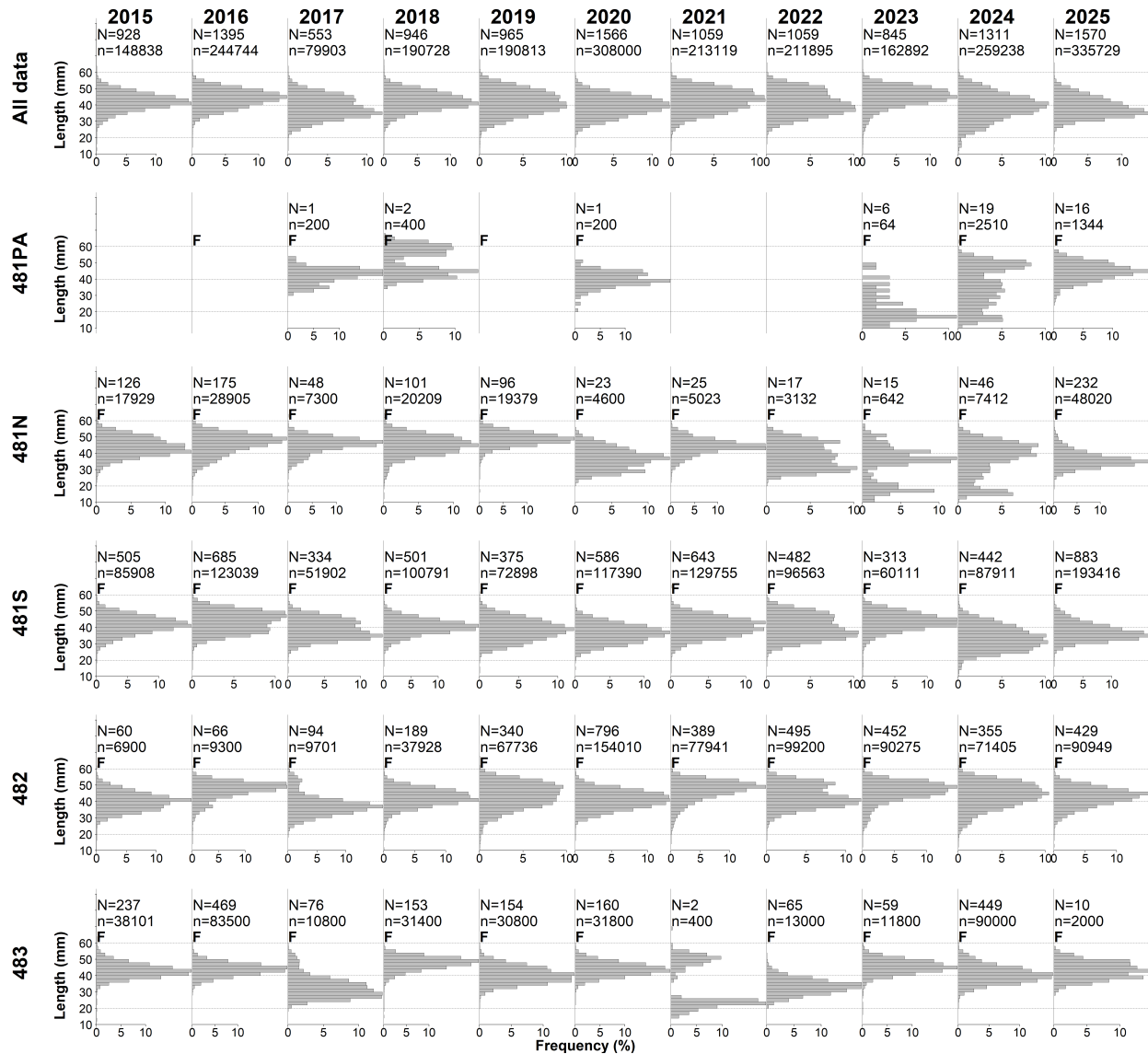


Figure 10. Recent annual length frequency distributions of krill in Area 48 (top panel) and in Subareas 48.1 (PA, N and S see Fig. 4), 48.2 and 48.3 (lower panels). The number of hauls from which krill were measured (N) and the number of individuals measured (n) in each year are provided; the months in which fishing occurred in a subarea are indicated by the letter F.

Analyses of the factors influencing variability in the length frequency distributions of krill collected by observers identified the greatest source of variability to be the timing and location of sampling (rather than a gear or vessel effect). Based on these analyses, the Working Group on Ecosystem Monitoring and Management (WG-EMM) recommended in 2015 that the observer data length frequency distributions could be aggregated by Subarea and month, with the additional recommendation that, in the case of Subarea 48.1, the length frequency distributions were further aggregated for areas to the north and south of the South Shetland Islands (Fig. 10, see also Fig. 4 caption).

The length frequency distributions by month and Subarea for the most recent complete season, 2024, are shown in Figure 11 and for all data available for 2025, are shown in Figure 12. The monthly length frequency distributions by Subarea for fishing seasons ranging from 2015 to 2023 are provided in the Appendix.

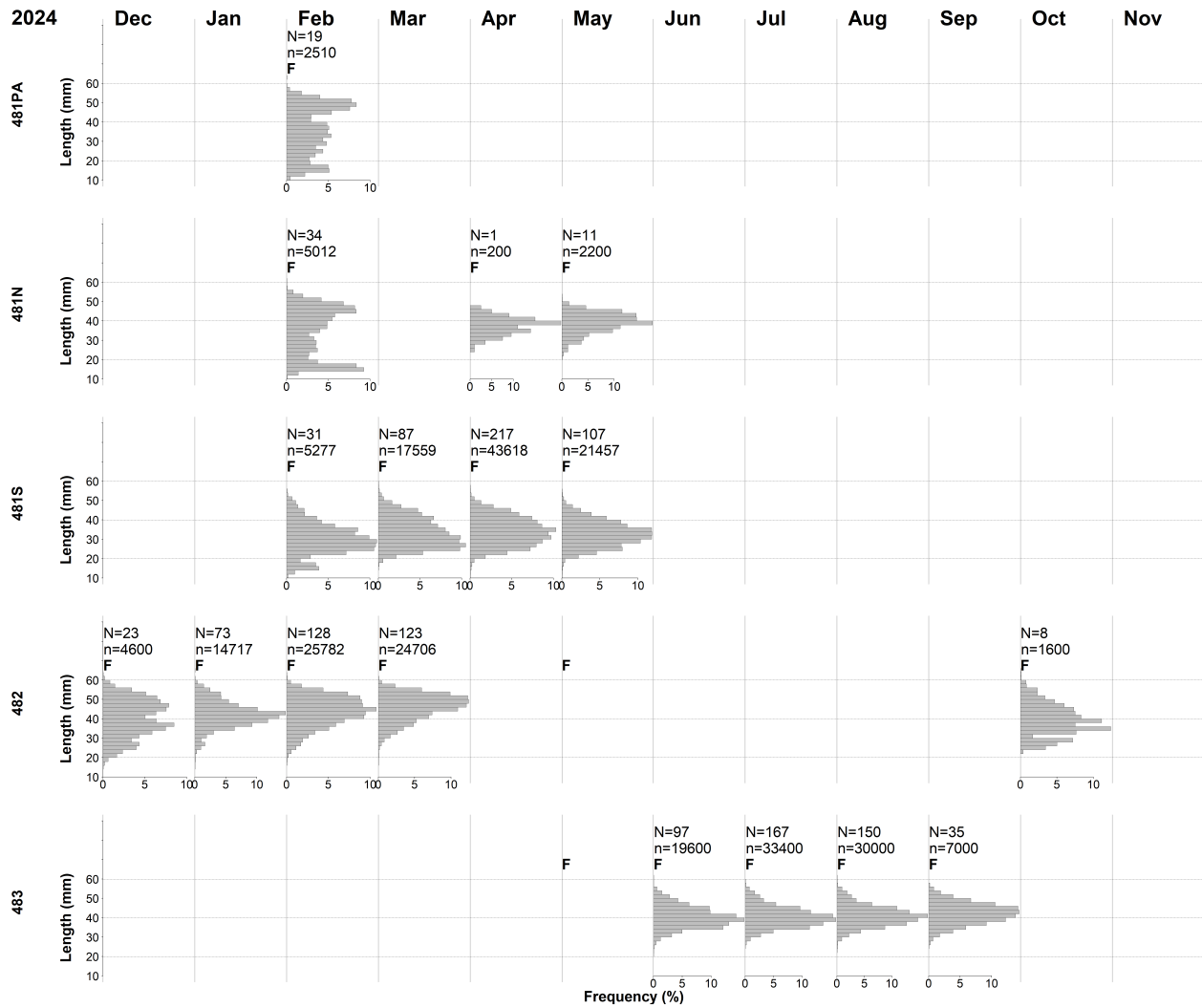


Figure 11. Monthly length frequency distributions for krill in Subareas 48.1 (including PA, N and S), 48.2 and 48.3 in 2024. The number of hauls from which krill were measured (N) and the number of individuals measured (n) in each month are provided; the months in which fishing occurred in a Subarea are indicated by the letter F.

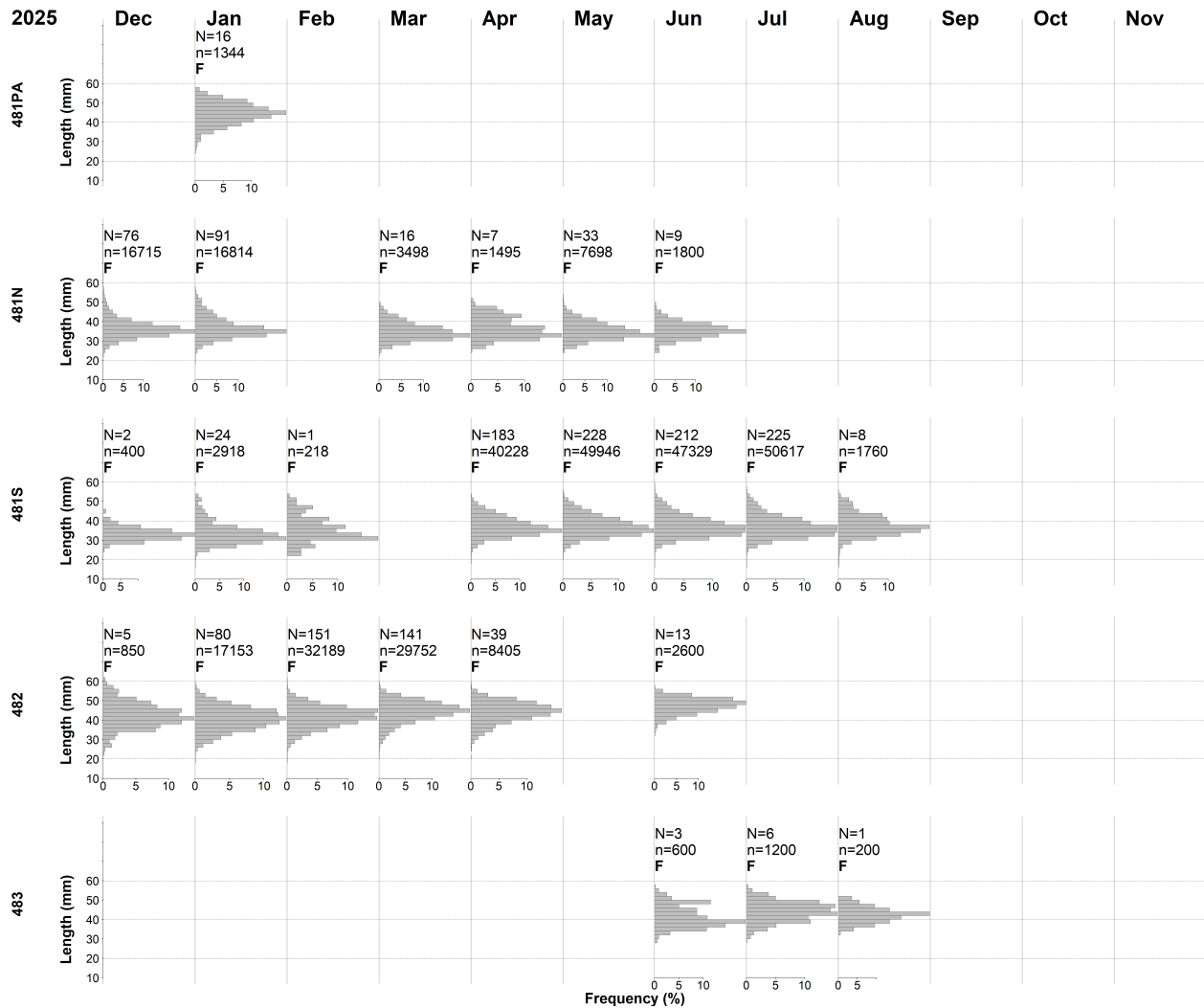


Figure 12. Monthly length frequency distributions for krill in Subareas 48.1 (including PA, N and S), 48.2 and 48.3 in 2025. The number of hauls from which krill were measured (N) and the number of individuals measured (n) in each month are provided; the months in which fishing occurred in a Subarea are indicated by the letter F.

5. Ecosystem implications and effects

Recognition of the central role of krill in the ecosystem is at the core of the approach taken by CCAMLR in the management of the krill fishery. One element of this, the CCAMLR Ecosystem Monitoring Program (CEMP), was established in 1985 to detect changes in the krill-based ecosystem to provide a basis for regulating harvesting of Antarctic marine living resources in accordance with the ‘ecosystem approach’. The program aims to (SC-CAMLR-IV, paragraph 7.2):

- Detect and record significant changes in critical components of the ecosystem, to serve as a basis for the conservation of Antarctic marine living resources
- Distinguish between changes due to the harvesting of commercial species and changes due to environmental variability, both physical and biological.

Further information and analysis on CEMP can be found in [WG-EMM-2025/06](#). A list of current CEMP sites along with short descriptions of their monitoring efforts is provided on the [CEMP webpage](#) and a map of their location is given in Figure 13.

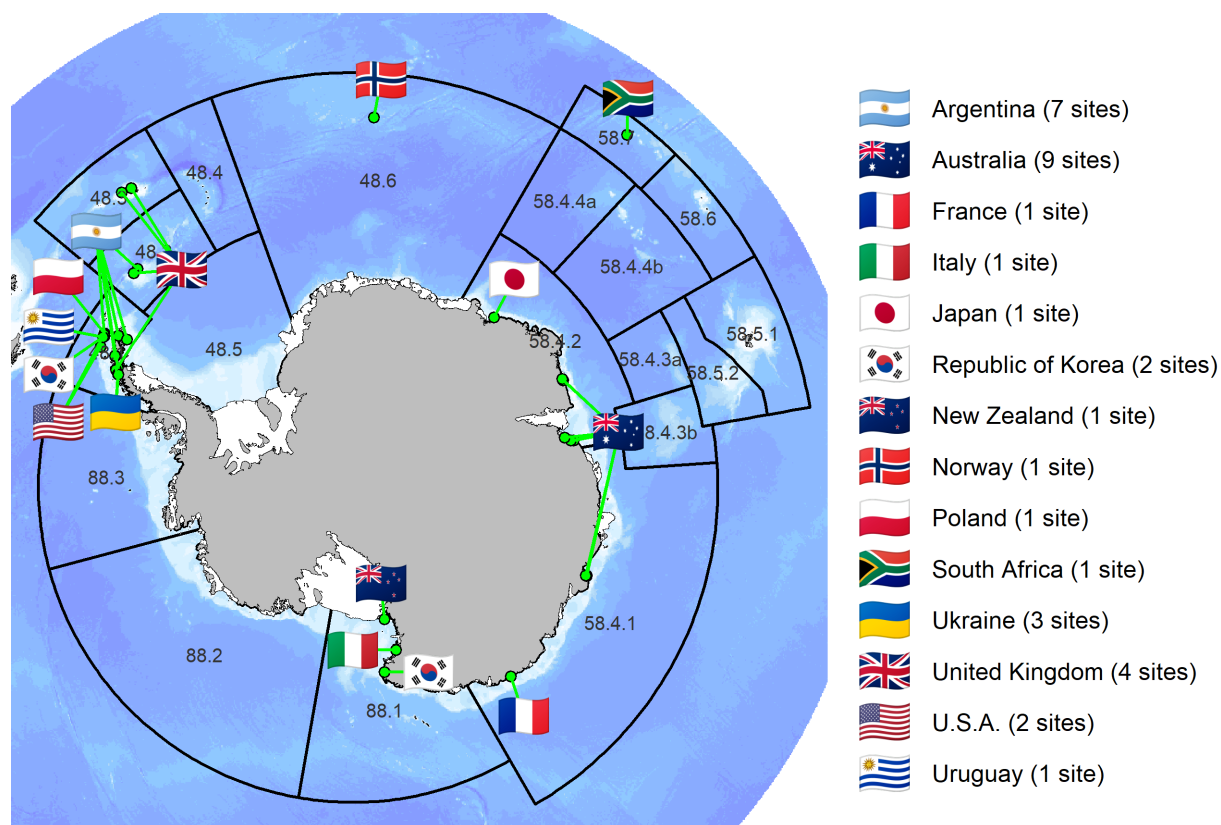


Figure 13. Location of CEMP sites and count of sites per Member. Coastlines and ice shelves: UK Polar Data Centre/BAS and Natural Earth. Bathymetry: GEBCO. Projection: EPSG 6932.

In 2023, WG-EMM held discussions related to the use of existing CEMP data and to the expansion of the CEMP ([WG-EMM-2023](#), paragraphs 5.48–5.66). To help progress this collaborative work, four temporary research teams were created:

- (i) Analysis of existing monitoring data,
- (ii) monitoring of current and potential sentinel species,
- (iii) krill fishery and at sea monitoring,
- (iv) environmental/non-biological parameters of relevance to wider ecosystem monitoring.

In 2024, WG-EMM held discussions related to Enhancing CEMP to help meet CCAMLR’s objective ([WG-EMM-2024](#), paragraphs 6.1–6.79) and created an additional three temporary research teams:

- (v) Predator tracking,
- (vi) Use of existing external data,
- (vii) Cetacean monitoring.

In 2025, the Scientific Committee endorsed the recommendation by WG-EMM to consider an enhanced CEMP as an integral part of implementing the Krill Fishery Management Approach ([SC-CAMLR-44](#), paragraph 2.60).

6. Stock status

Details on CCAMLR’s approach to managing the krill fishery are given in [this document](#).

In 2023, WG-EMM agreed to an initial coordinated workplan to collect information on krill stock structure and dynamics in Area 48 and adjacent waters ([WG-EMM-2023](#), paragraph 4.32 and Table 1).

In 2024, the SCAR Krill Expert Group ([SKEG](#)) and WG-EMM provided four recommendations to further develop a Krill Stock Hypothesis (KSH) for Area 48 ([WG-EMM-2024](#), paragraph 3.27) which were endorsed by the Scientific Committee ([SC-CAMLR-43](#), paragraph 2.37).

In 2025, the Scientific Committee endorsed the recommendation by WG-EMM to incorporate a continuously updated KSH into the relevant components of the Krill Fishery Management Approach ([SC-CAMLR-44](#), paragraph 2.59).

7. Climate Change and environmental variability

In 2022, the Commission recognised that climate change is already having effects in the Convention Area ([CCAMLR-41](#), paragraph 6.3) and agreed that it needed to act urgently to prepare for, and adapt to, the effects of climate change on the marine ecosystems within the Convention Area ([CCAMLR-41](#), paragraph 6.5). The Commission noted ([CCAMLR-41](#), paragraph 6.4) that the Scientific Committee had incorporated climate change into its advice ([SC-CAMLR-41](#), paragraph 7.8) and through discussions at the SC-Symposium ([SC-CAMLR-41](#), Annex 11) had also added climate change to the work plans and terms of reference of its Working Groups ([SC-CAMLR-41](#), paragraph 7.14). The Commission adopted ([CCAMLR-41](#), paragraph 6.28) Resolution [36/41](#).

In 2023, the Scientific Committee held a workshop on Climate Change ([WS-CC-2023](#)) which made recommendations regarding monitoring and management actions CCAMLR could progress to document and track the effects of climate change in the Convention Area. The recommendations were incorporated into the workplan of the Scientific Committee. The Scientific Committee discussed how CEMP could contribute to monitoring climate change impacts and help to disentangle these impacts from the effects of fishing ([SC-CAMLR-42](#), paragraphs 2.70–2.78). Further, the Scientific Committee recommended that summaries of evidence for changes in stock assessment parameters or processes that could be due to the effects of environmental variability or climate change be developed for all fisheries ([SC-CAMLR-42](#), paragraph 2.149).

In 2024, the Scientific Committee discussed progress on a “State of the Environment” report developed for Area 48 as a mechanism to track and communicate changes in marine living resources in relation to climate change ([SC-CAMLR-43](#), paragraphs 5.22–5.25).

In 2025, the Scientific Committee progressed its consideration of reporting mechanisms ([SC-CAMLR-44](#), paragraphs 5.7–5.13) and supported the upcoming joint SC-CAMLR/CEP workshop on climate change ([SC-CAMLR-44](#), paragraphs 7.3, 7.4 and 7.7).

References

- Budzinski, E., P. Bykowski and D. Dutkiewicz. 1985. Possibilities of processing and marketing of products made from Antarctic krill. FAO Fish. Tech. Pap., 268. FAO, Rome: 46 pp.
- Priddle, J., J.P. Croxall, I. Everson, R.B. Heywood, E.J. Murphy, P.A. Prince and C.B. Sear. 1988. Large-scale fluctuations in distribution and abundance of krill - a discussion of possible causes. In: Sahrhage, D. (Ed.). Antarctic Ocean and Resources Variability. Springer-Verlag, Berlin Heidelberg: 169-182.

Trathan, P.N., J.L. Watkins, A.W.A. Murray, A.S. Brierley, I. Everson, C. Goss, J. Priddle, K. Reid, P. Ward, R. Hewitt, D. Demer, M. Naganobu, S. Kawaguchi, V. Sushin, S.M. Kasatkina, S. Hedley, S. Kim and T. Pauly. 2001. The CCAMLR-2000 Krill Synoptic Survey: a description of the rationale and design. *CCAMLR Science*, 8: 1-24.

Additional Resources

- Fishery Summary: [pdf](#), [html](#)
- Management approach: [pdf](#)
- Species Description: [pdf](#), [html](#)
- [Fisheries Documents Browser](#)

Appendix

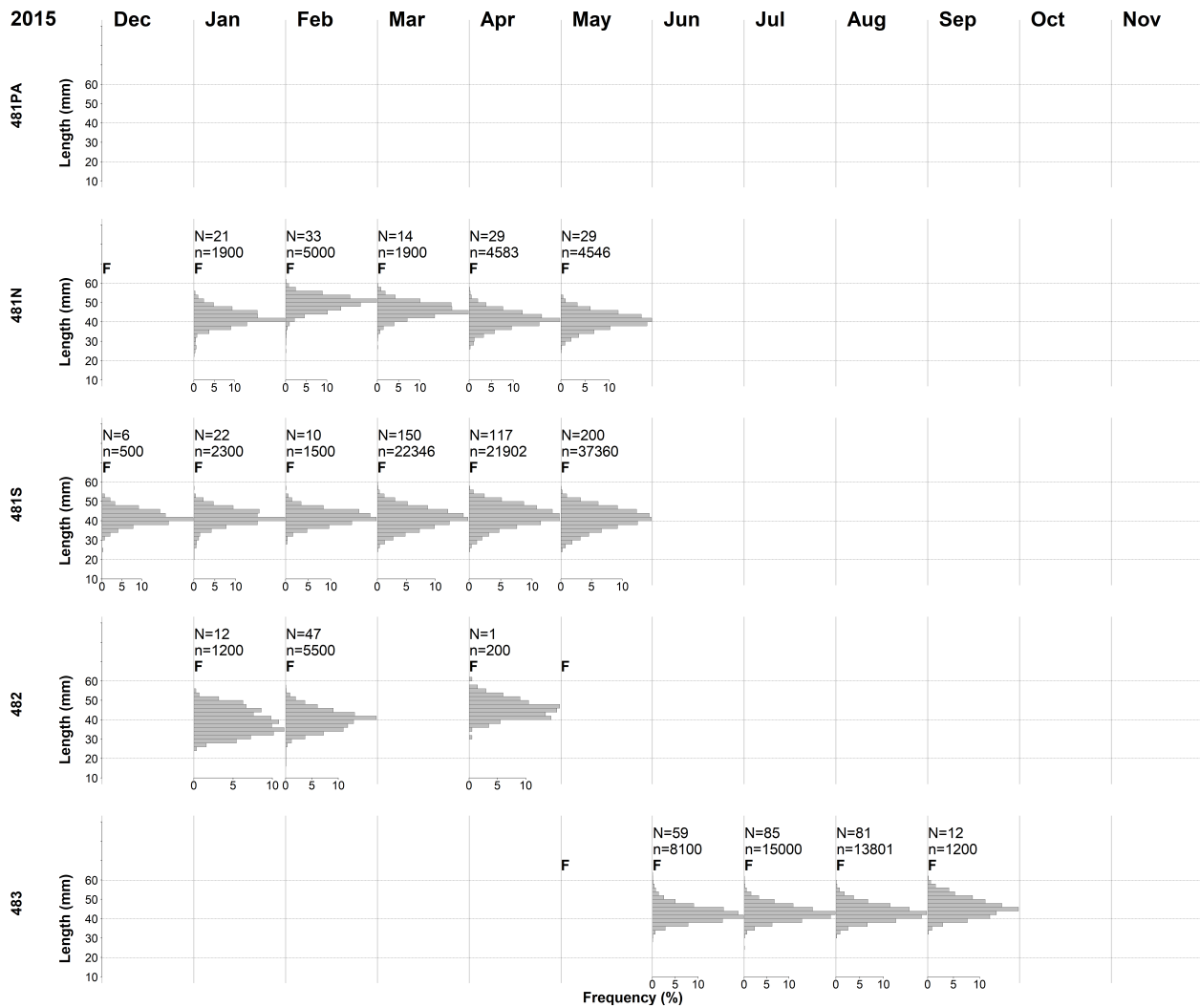


Figure A1. Monthly length frequency distributions for krill in Subareas 48.1 (including PA, N and S), 48.2 and 48.3 in 2015. The number of hauls from which krill were measured (N) and the number of individuals measured (n) in each month are provided; the months in which fishing occurred in a subarea are indicated by the letter F.

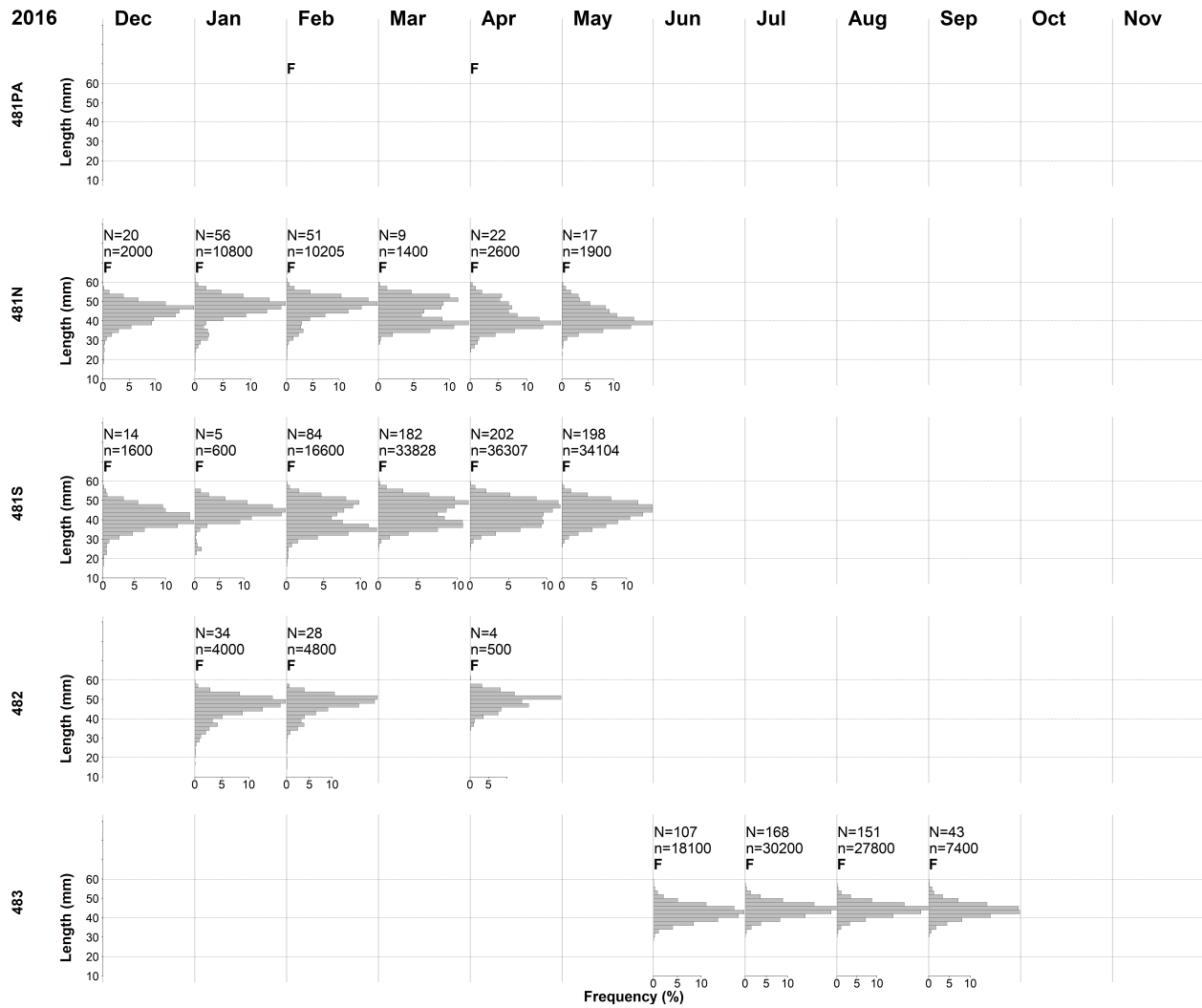


Figure A2. Monthly length frequency distributions for krill in Subareas 48.1 (including PA, N and S), 48.2 and 48.3 in 2016. The number of hauls from which krill were measured (N) and the number of individuals measured (n) in each month are provided; the months in which fishing occurred in a subarea are indicated by the letter F.

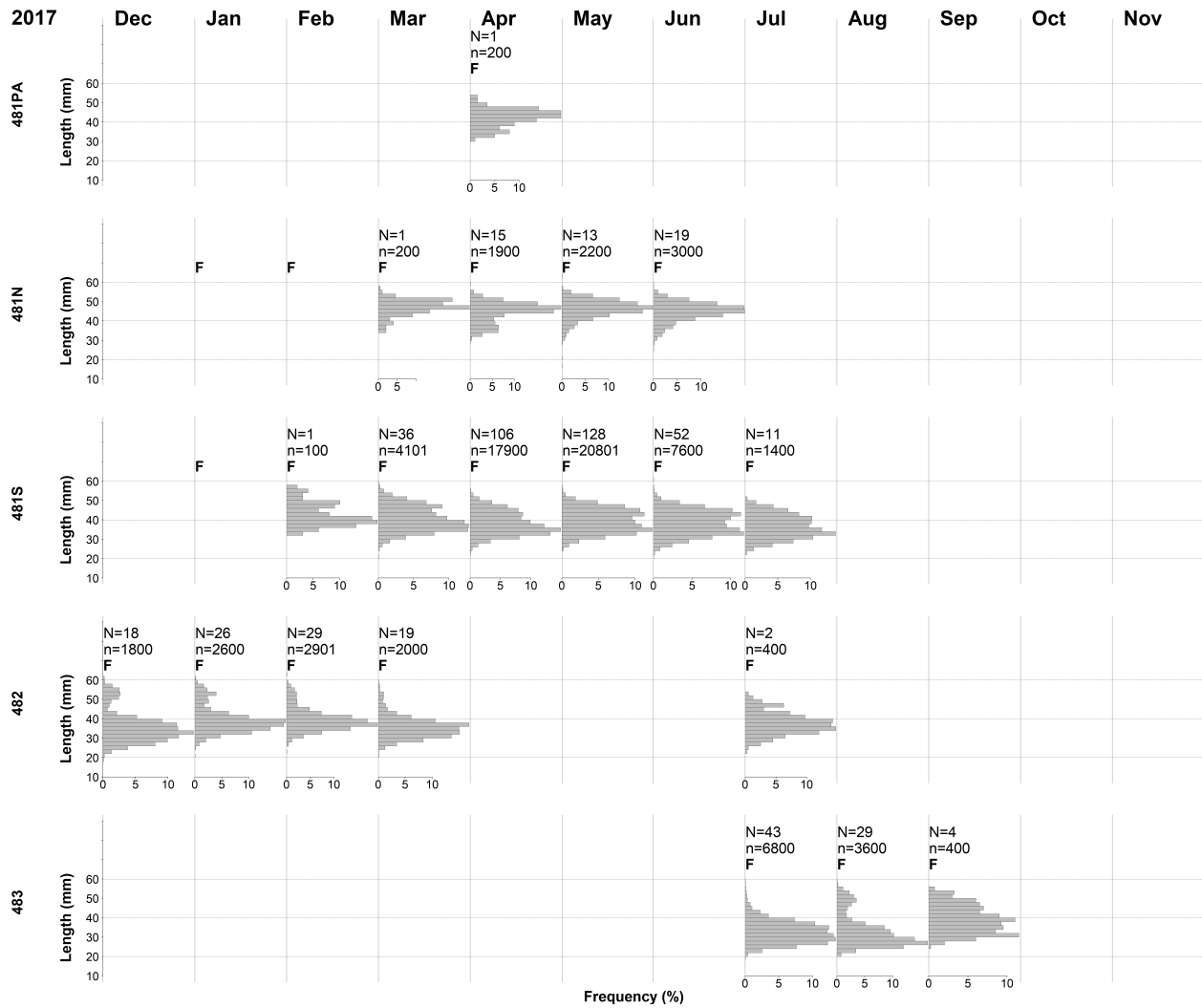


Figure A3. Monthly length frequency distributions for krill in Subareas 48.1 (including PA, N and S), 48.2 and 48.3 in 2017. The number of hauls from which krill were measured (N) and the number of individuals measured (n) in each month are provided; the months in which fishing occurred in a subarea are indicated by the letter F.

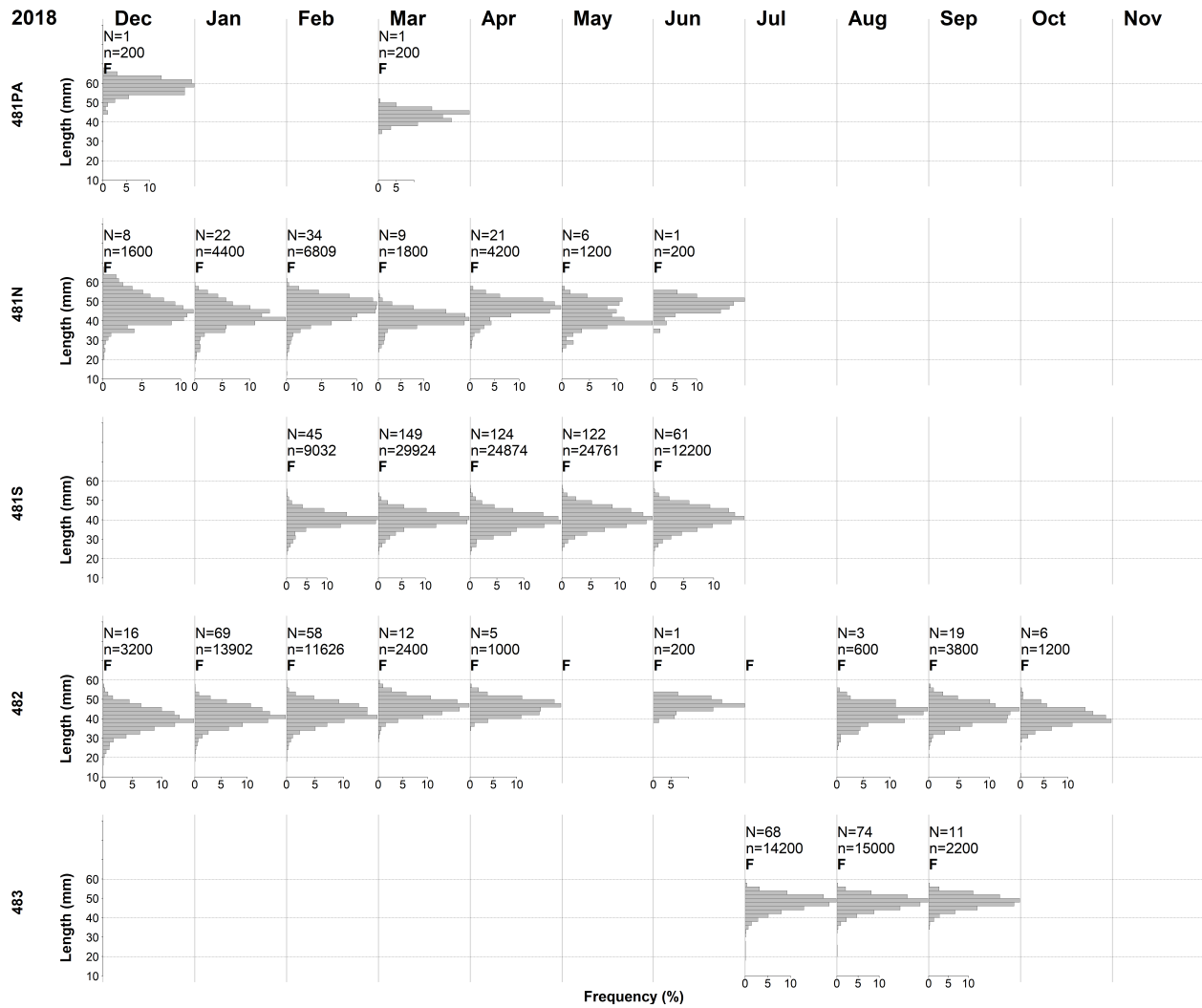


Figure A4. Monthly length frequency distributions for krill in Subareas 48.1 (including PA, N and S), 48.2 and 48.3 in 2018. The number of hauls from which krill were measured (N) and the number of individuals measured (n) in each month are provided; the months in which fishing occurred in a subarea are indicated by the letter F.

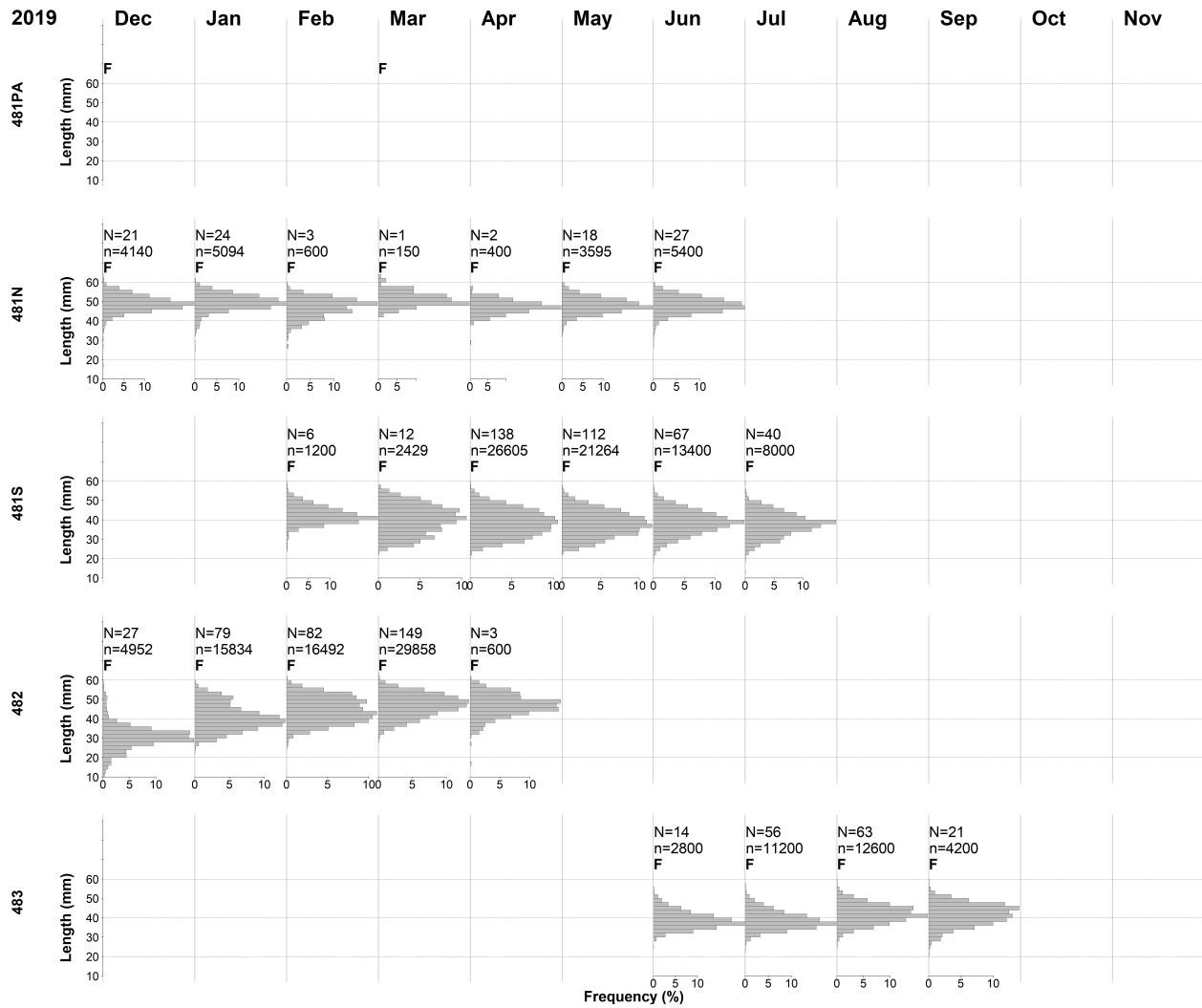


Figure A5. Monthly length frequency distributions for krill in Subareas 48.1 (including PA, N and S), 48.2 and 48.3 in 2019. The number of hauls from which krill were measured (N) and the number of individuals measured (n) in each month are provided; the months in which fishing occurred in a subarea are indicated by the letter F.

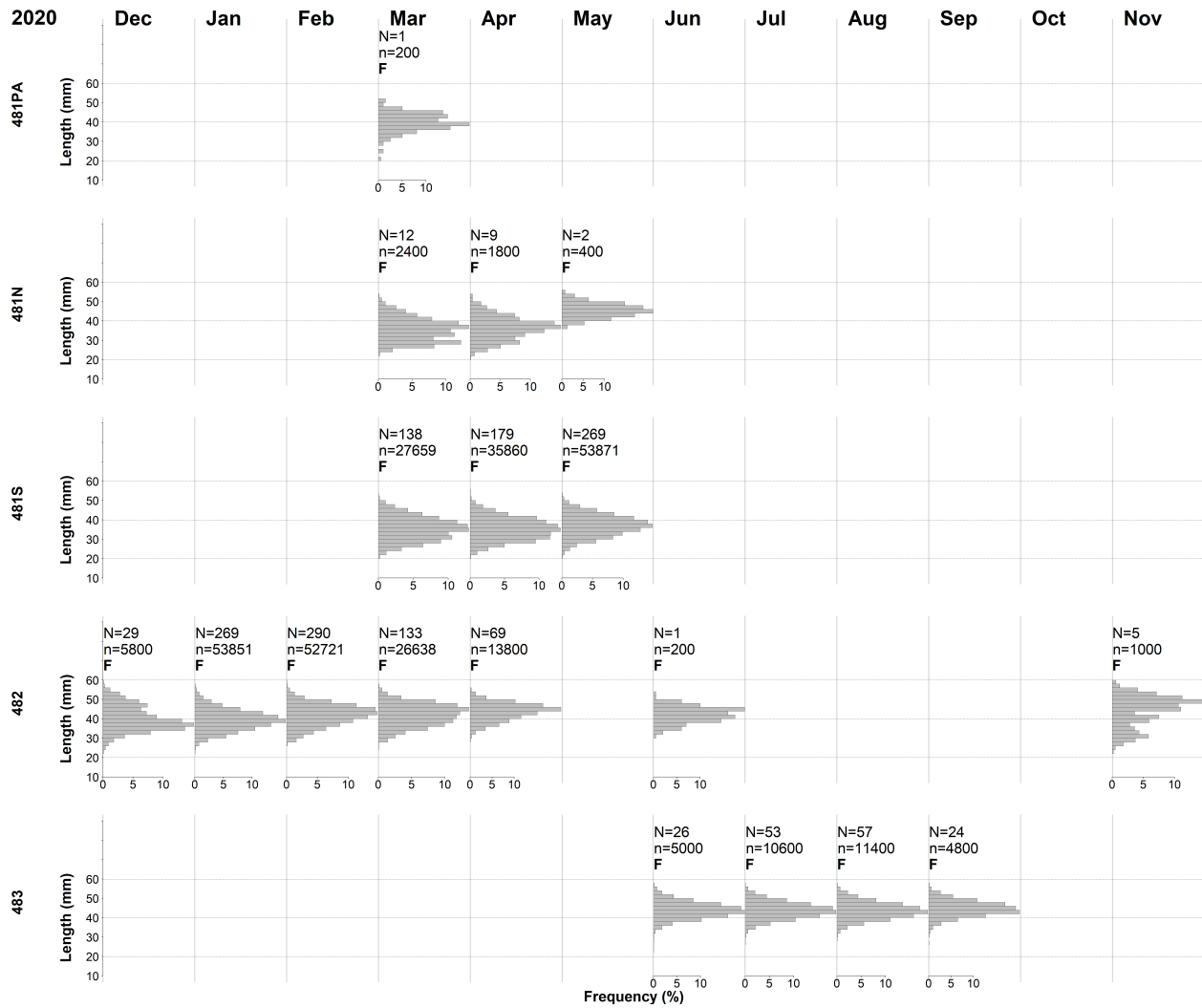


Figure A6. Monthly length frequency distributions for krill in Subareas 48.1 (including PA, N and S), 48.2 and 48.3 in 2020. The number of hauls from which krill were measured (N) and the number of individuals measured (n) in each month are provided; the months in which fishing occurred in a subarea are indicated by the letter F.

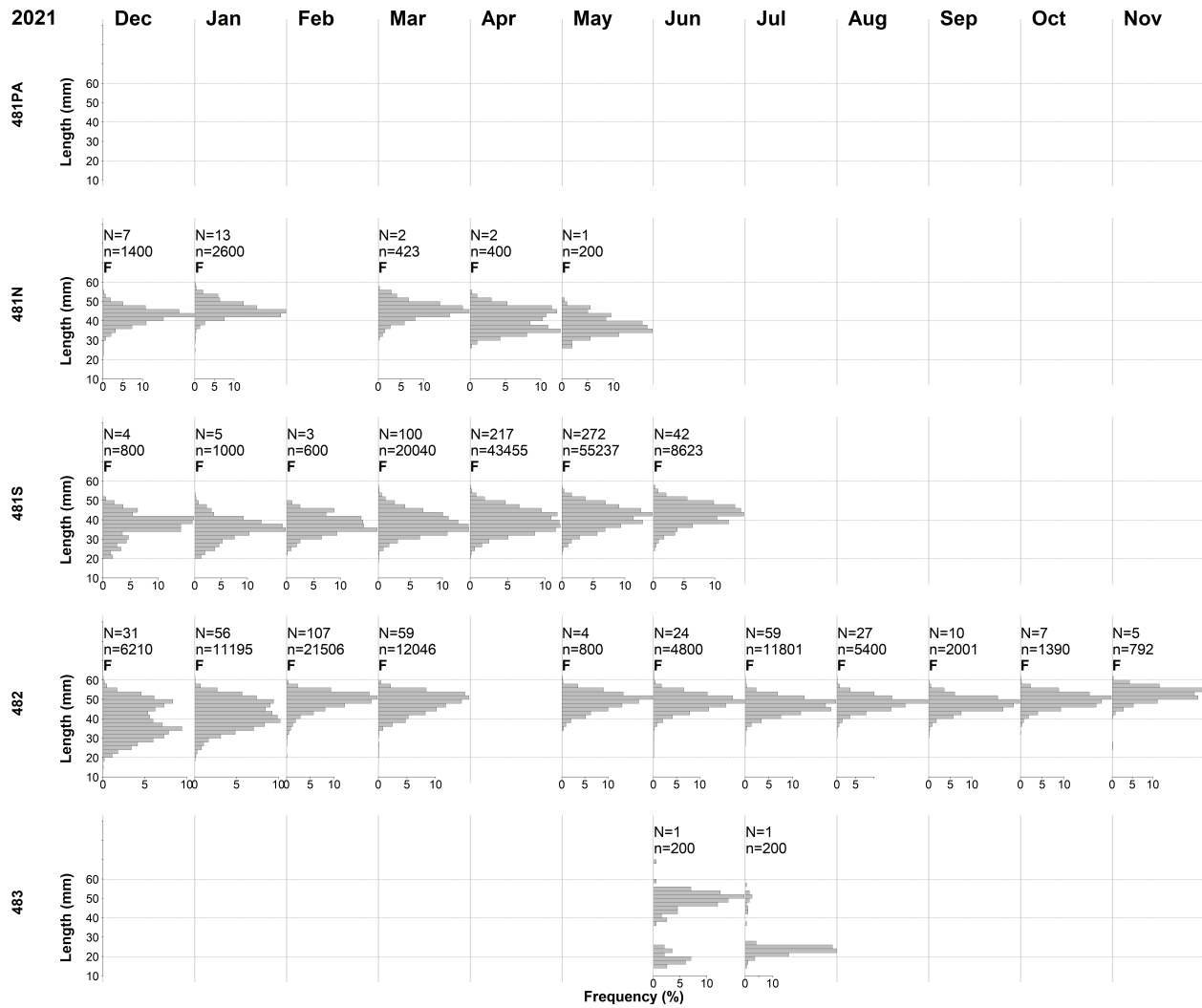
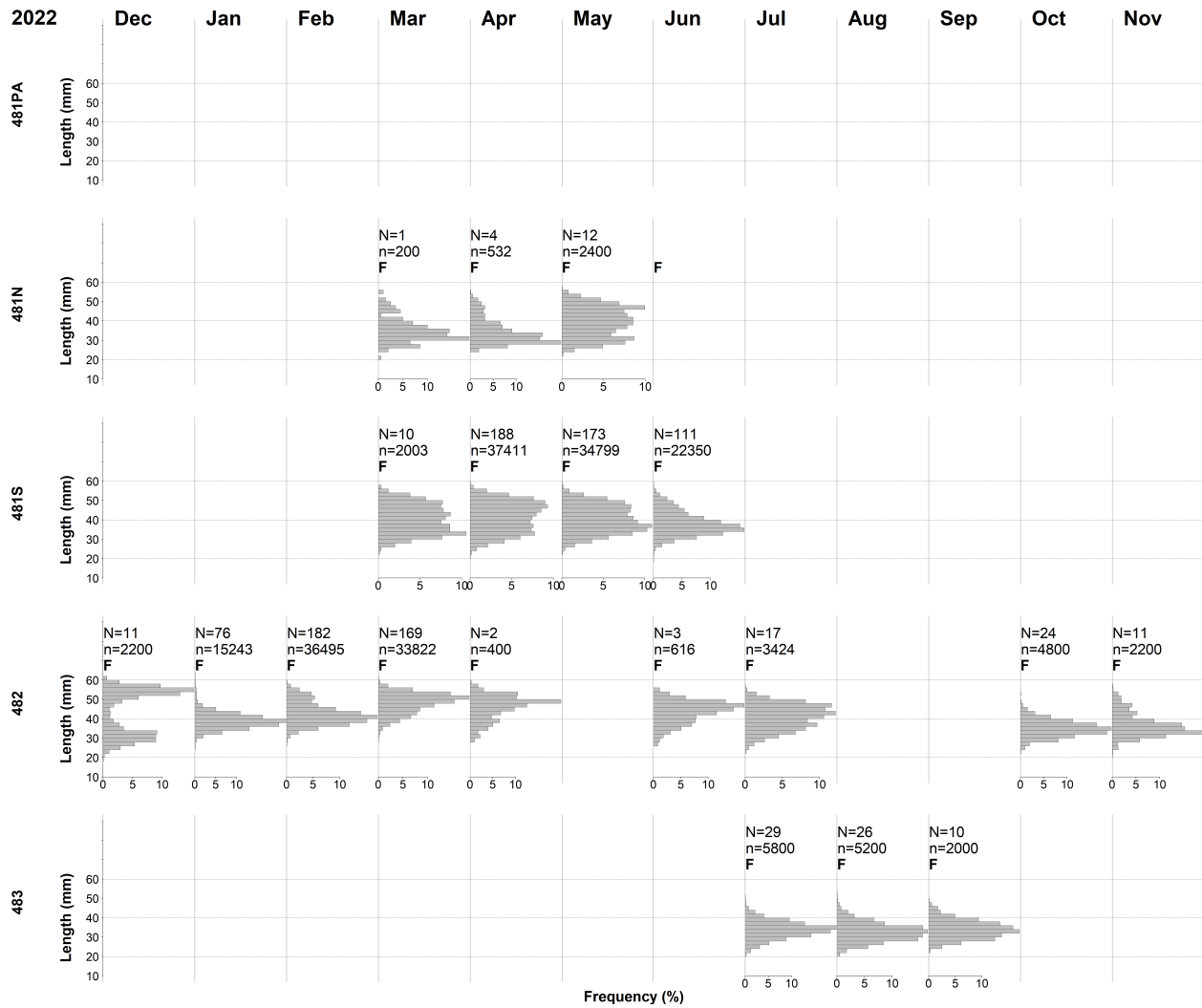


Figure A7. Monthly length frequency distributions for krill in Subareas 48.1 (including PA, N and S), 48.2 and 48.3 in 2021. The number of hauls from which krill were measured (N) and the number of individuals measured (n) in each month are provided; the months in which fishing occurred in a subarea are indicated by the letter F.



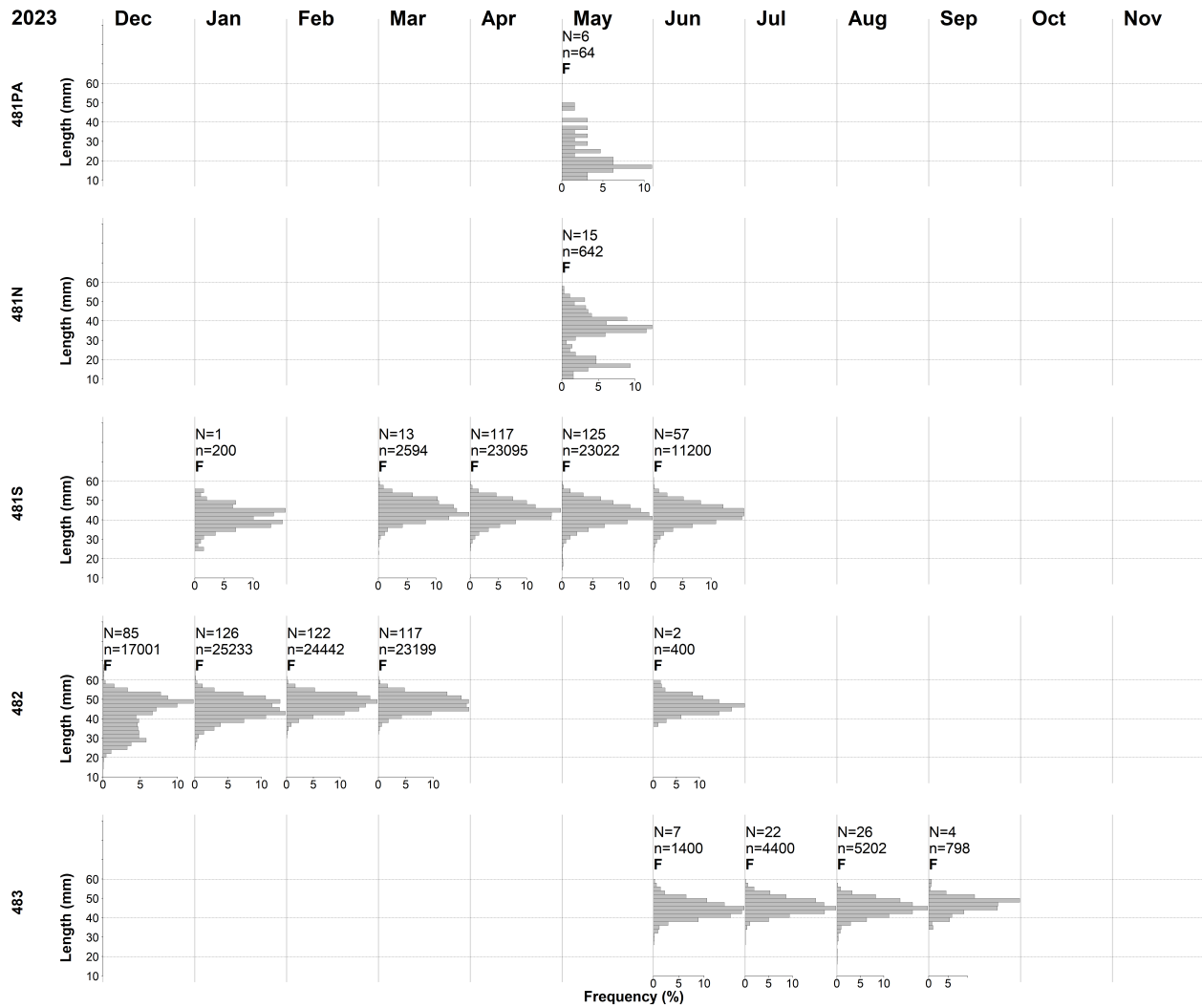


Figure A9. Monthly length frequency distributions for krill in Subareas 48.1 (including PA, N and S), 48.2 and 48.3 in 2023. The number of hauls from which krill were measured (N) and the number of individuals measured (n) in each month are provided; the months in which fishing occurred in a subarea are indicated by the letter F.

Table A1. Annual catch (tonnes) of krill from Small-Scale Management Units (SSMUs; see Fig. 4) in Area 48 reported since 1994. More than 95 percent of catches can be allocated to SSMUs based on haul by haul location reporting. A blank cell indicates that there was no fishing, a 0 indicates that fishing occurred but that there was a catch of less than 0.5 tonnes.

Season	Subarea 48.1								Subarea 48.2				Subarea 48.3		
	APPA	APW	APDPW	APDPE	APEI	APBSW	APBSE	APE	SOPA	SOW	SONE	SOSE	SGPA	SGW	SGE
1994	5	4	26564	722	17659	146			4	17806	103	1347	381	11	19906
1995	6256		13844	2646	15030	388			51	47509		1273	72	287	40461
1996	5828		37685	4191	12727	1331		25	10	2118	3		15	5191	22657
1997	806		23045	15354	9096	180	22			8	91			106	26601
1998	3340	2858	23888	17955	5766	1594			259	6151	304		14	3797	22722
1999	2593	3868	11382	10810	8880	41	925		605	45902	3429	12513		0	0
2000	274	108	35166	19943	11412	7110	2972		3152	11150	1133	1496	6310	1984	11052
2001	5	683	24449	18218	4609	3600	759			1115	22	3861		10963	24768
2002	138	3	4853	1405	3914	330	57		53	51086	2941	893	2842	8889	28180
2003	47	58	29772	1504	961	336	16		547	16286	59	48	782	13966	51411
2004	349	248	5104	1467	6172	404	1900		299	47101	782	10	151	33168	22824
2005	9		5039	1966	38	44			52	70090	2033	87	22	307	48131
2006		40	41504	10133	2190	13375	23326			2893	185	33		8235	6665
2007	29	4	12154	2079	1184	502	19		10	64598	3413		6	3263	17468
2008			218	113	2251					88615	178	11		35277	22352
2009	1500		3327	1637	3883	635	20087	3049	1648	89066	875			0	0
2010	67	5999	17290	8797	1772	85514	34891		1279	48921	74	218		0	8834
2011	392	10	649	7975	15	59	115		490	111472	3836	196		2671	53130
2012	11	16955	20460	4901	73	28422	5010		43	28789	166			6197	50218
2013	83	13477	3801	7725	257	109155	18754		34	30539	4			3439	28782
2014	113	6712	19729	7374	676	49589	62245			69962	2492			0	75252
2015	0	36267	347	3131	5618	71007	37807		8	14282	2811				54354
2016	13	37789	0	5052	625	37147	73816			33848	436	17		218	71189
2017	60	18290	14846	2542		73842	39752	2		64307	4738			6441	12117
2018	12	22198	626	8673	511	75665	44006		2	132871	5006			11	23163
2019	0	206	1146	6990	1966	104643	40845			151157	11413	3			71799
2020	7	35031	938	25		27217	93862		3811	158569	16002			1044	114274
2021		8644	190	1117	73	87740	64008		2991	147663	58814	286			0
2022		8981	0	6	3	83514	49912	997	1467	184170	6565			60659	19235
2023	0	0	0	0	0	29822	123134	631	19	101759	81774	1284		136	85644
2024	207	38111	0	0	0	77758	48538	27	28	169817	6939	5		36176	120744
2025	0	100674	0	303	0	157968	100321	0	271	173692	86541	126		276	4746