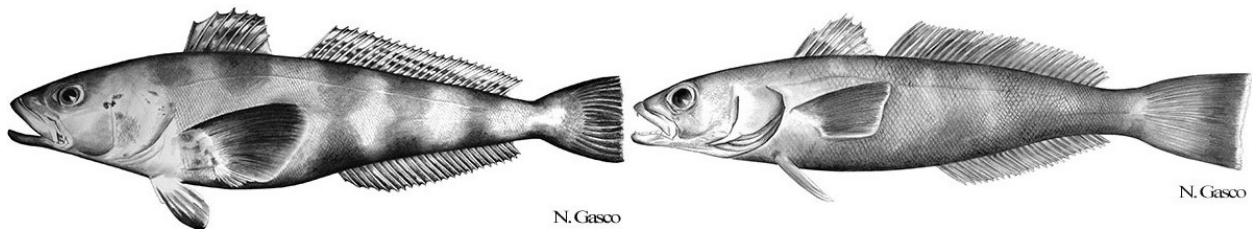


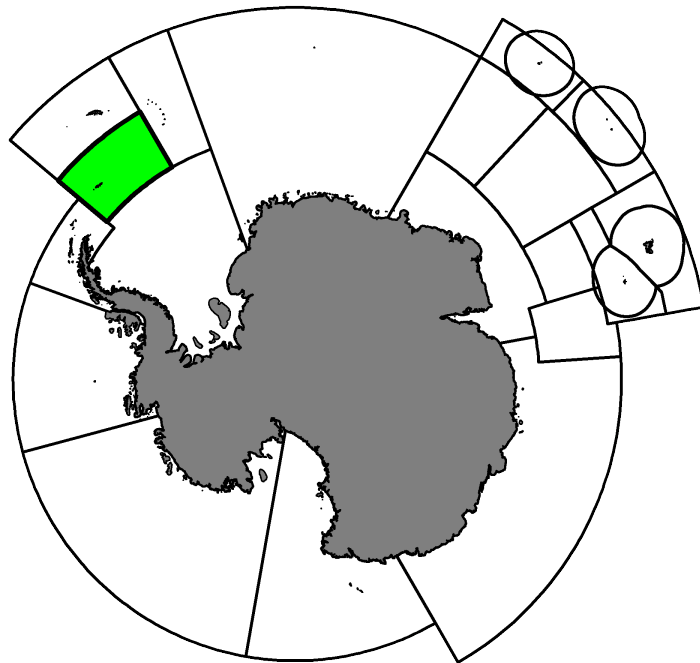
Fishery Summary 2020: *Dissostichus eleginoides* and *Dissostichus mawsoni* in Subarea 48.2

CCAMLR Secretariat

16 March 2021

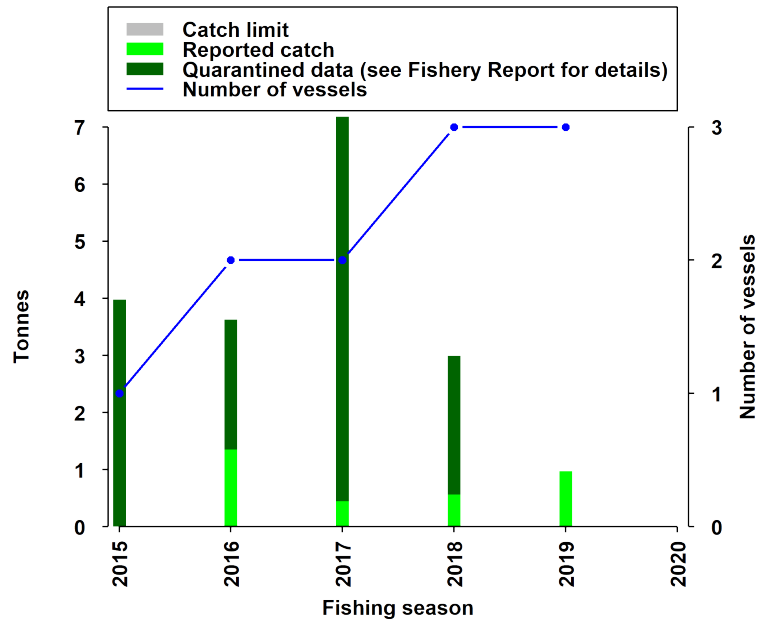


Antarctic toothfish, *Dissostichus mawsoni* Norman, 1937, and, patagonian toothfish, *Dissostichus eleginoides* Smitt, 1898.

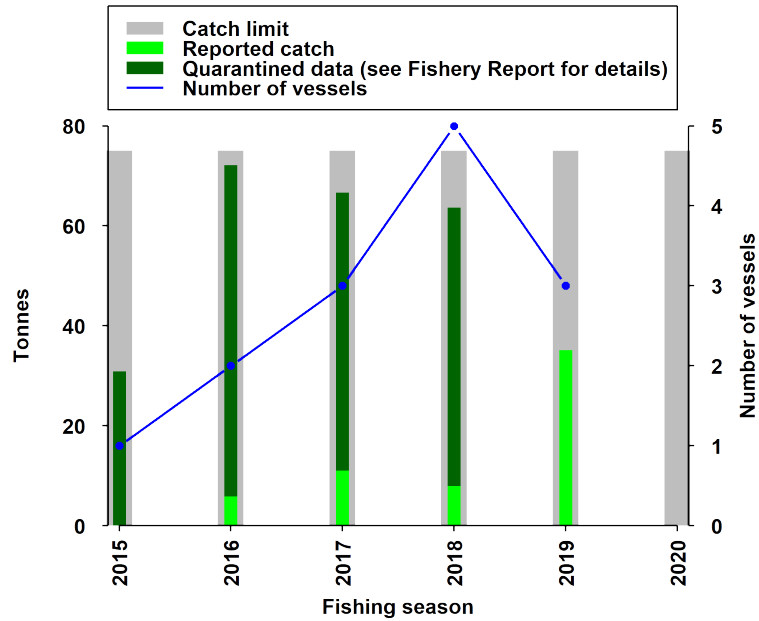


Map of the management areas within the CAMLR Convention Area. Subarea 48.2 is shaded in green.

Catch history



Catch and effort history for Patagonian Toothfish. Catch limits (shown below) apply to the combined catch of both species.



Catch and effort history for Antarctic Toothfish.

Summary table

Stock Status	Not assessed
Type of Fishery	Research only
Fishing gear	Demersal longlines
Conservation Measure specific to this Summary	CM 24-01

Additional Conservation Measures

In addition to [Conservation Measures](#) that apply to all Areas and all Species, the following Conservation Measures address wider environmental considerations in this fishery:

Description	Species	Area	Conservation Measure
The application of conservation measures to scientific research	All Species	All Areas	CM 24-01
Fishing for research purposes pursuant to Conservation Measure 24-01	All Species	All Areas	CM 24-05

Additional Resources

- Fishery Report: [pdf](#), [html](#)
- Species Description for Patagonian Toothfish: [pdf](#), [html](#)
- Species Description for Antarctic Toothfish: [pdf](#), [html](#)
- [Fisheries Documents Browser](#)