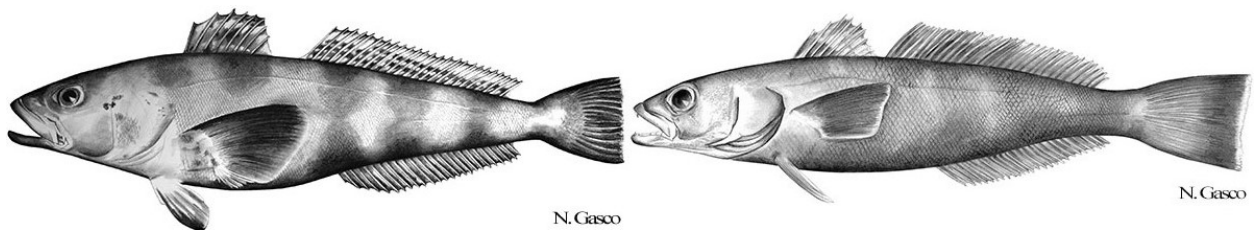


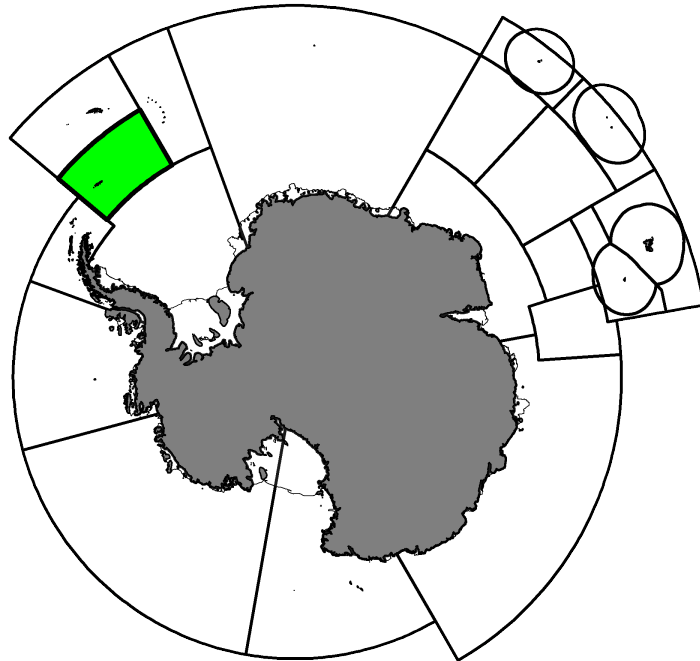
Fishery Summary 2024: *Dissostichus eleginoides* and *Dissostichus mawsoni* in Subarea 48.2

CCAMLR Secretariat

07 April 2025

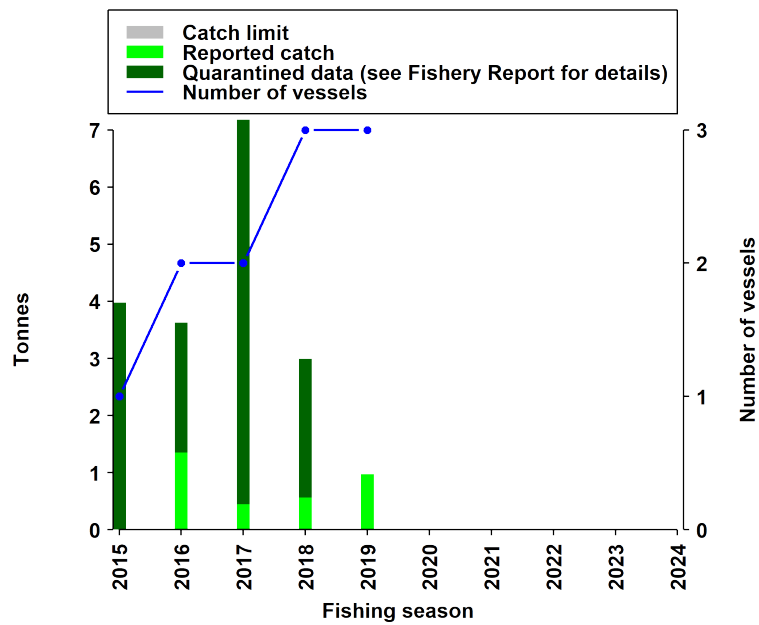


Antarctic toothfish *Dissostichus mawsoni* Norman, 1937, and Patagonian toothfish *Dissostichus eleginoides* Smitt, 1898.

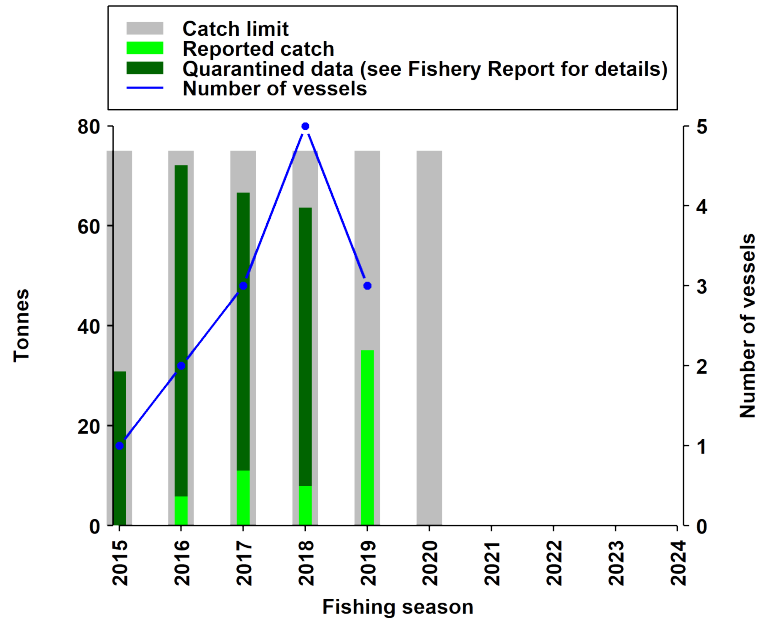


Map of the management areas within the CAMLR Convention Area. Subarea 48.2 is shaded in green. Coastlines and ice shelves: UK Polar Data Centre/BAS and Natural Earth. Projection: EPSG 6932.

Catch history



Catch and effort history for Patagonian toothfish. Catch limits (shown below) apply to the combined catch of both species.



Catch and effort history for Antarctic toothfish.

Summary table

Stock Status	Data limited
Classification of Fishery	Research only
Fishing gear	Demersal longlines
Conservation Measure specific to this fishery	CM 24-01

Additional Conservation Measures

In addition to [Conservation Measures](#) that apply to all Areas and all Species, the following Conservation Measures address wider environmental considerations in this fishery:

Description	Species	Area	Conservation Measure
The application of conservation measures to scientific research	All Species	All Areas	CM 24-01
Fishing for research purposes pursuant to Conservation Measure 24-01	All Species	All Areas	CM 24-05

Additional Resources

- Fishery Report: [pdf](#), [html](#)
- Species Description for Patagonian Toothfish: [pdf](#), [html](#)
- Species Description for Antarctic Toothfish: [pdf](#), [html](#)
- [Fisheries Documents Browser](#)