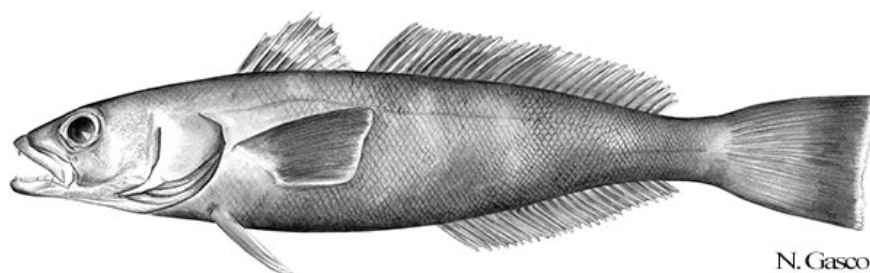


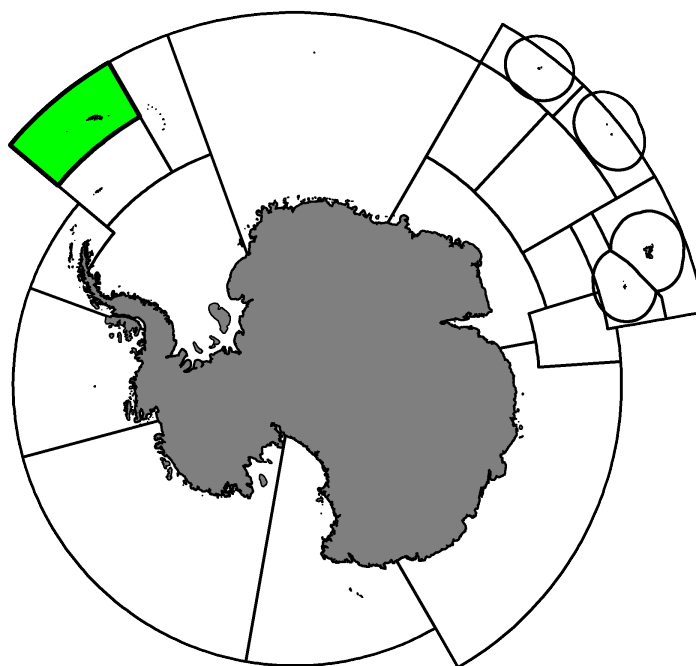
# Fishery Summary 2022: *Dissostichus eleginoides* in Subarea 48.3

CCAMLR Secretariat

12 April 2023

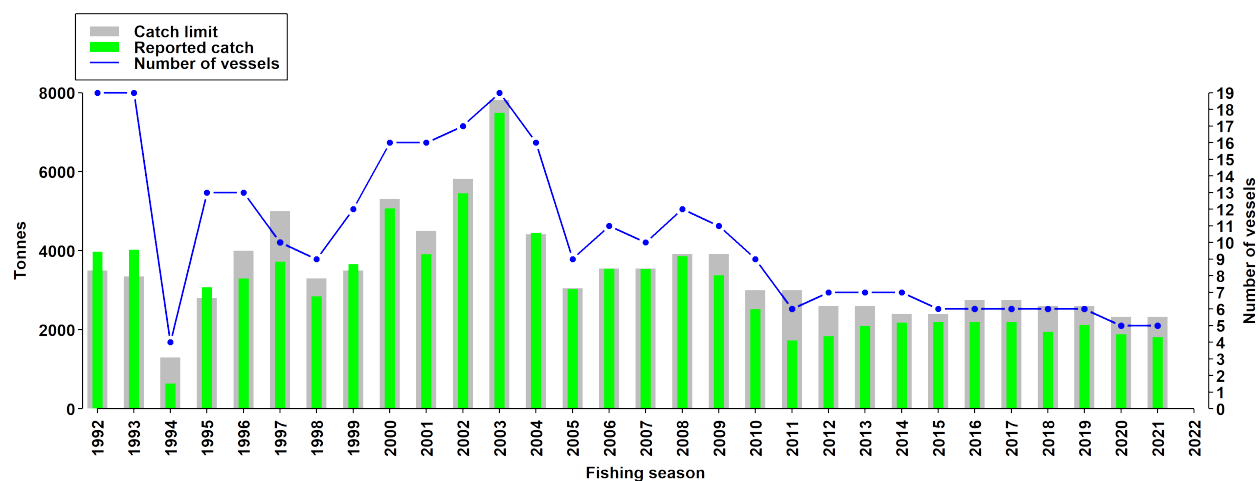


Patagonian Toothfish, *Dissostichus eleginoides* Smitt, 1898.



Map of the management areas within the CCAMLR Convention Area. Subarea 48.3, is shaded in green.

## Catch history



Catch and effort history. The Secretariat received catch reports from directed fishing on Patagonian toothfish in Subarea 48.3 but in the absence of CM 41-02 in 2022, they are not included in this figure. In 2022, 4 vessels caught 1578 tonnes of Patagonian toothfish.

## Summary table

<b>Stock Status</b>	Spawning stock at 47% of B0 (B0=77198 tonnes)
<b>Classification of Fishery</b>	Established
<b>Fishing gear</b>	Demersal longlines
<b>Conservation Measure specific to this fishery</b>	CM 41-02 (2019 - not currently in force)

## Additional Conservation Measures

In addition to [Conservation Measures](#) that apply to all Areas and all Species, the following Conservation Measures address wider environmental considerations in this fishery:

Description	Species	Area	Conservation Measure
Monthly Fine-Scale Biological Data Reporting System for Trawl, Longline and Pot Fisheries	All Species	All Areas	<a href="#">CM 23-05</a>
Minimisation of the incidental mortality of seabirds in the course of longline fishing or longline fishing research in the Convention Area	All Species	All Areas	<a href="#">CM 25-02</a>
Limitation of the By-Catch of <i>Gobionotothen gibberifrons</i> , <i>Chaenocephalus aceratus</i> , <i>Pseudochaenichthys georgianus</i> , <i>Notothenia rossii</i> and <i>Lepidonotothen squamifrons</i> in Statistical Subarea 48.3	<i>Chaenocephalus aceratus</i> , <i>Gobionotothen gibberifrons</i> , <i>Lepidonotothen squamifrons</i> , <i>Notothenia rossii</i> , <i>Pseudochaenichthys georgianus</i>	Subarea 48.3	<a href="#">CM 33-01</a>

## Additional Resources

- Fishery Report: [pdf](#), [html](#)
- Species Description: [pdf](#), [html](#)
- Stock Assessment Report: [pdf](#)
- [Fisheries Documents Browser](#)