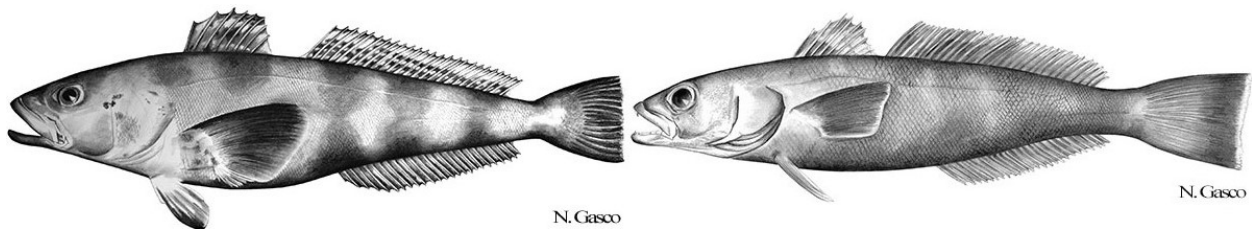


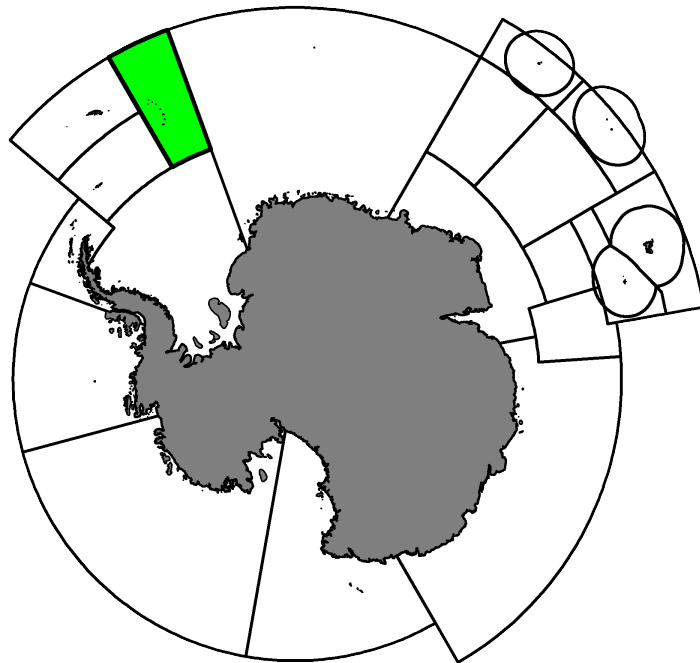
Fishery Summary 2020: *Dissostichus eleginoides* and *Dissostichus mawsoni* in Subarea 48.4

CCAMLR Secretariat

16 March 2021

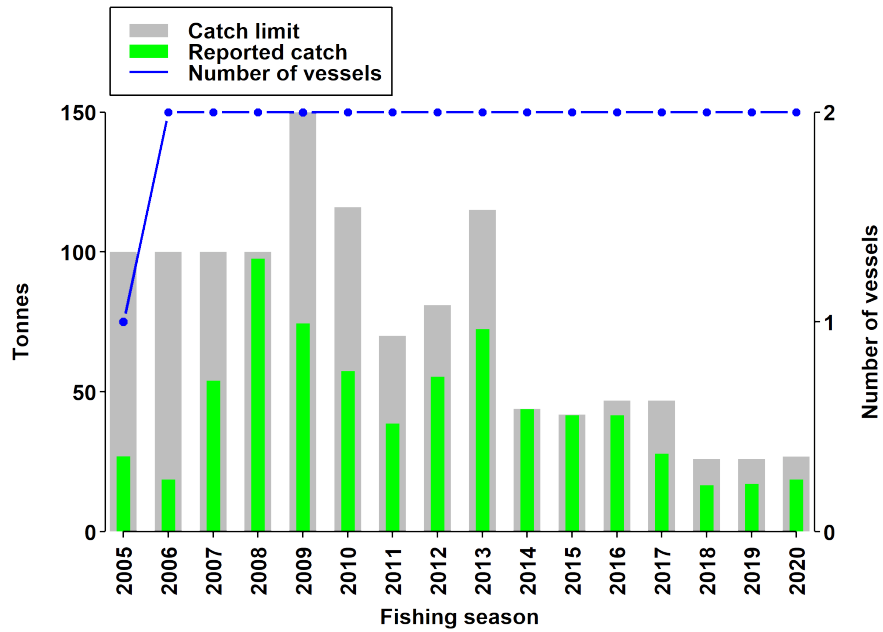


Antarctic toothfish, *Dissostichus mawsoni* Norman, 1937, and, patagonian toothfish, *Dissostichus eleginoides* Smitt, 1898.

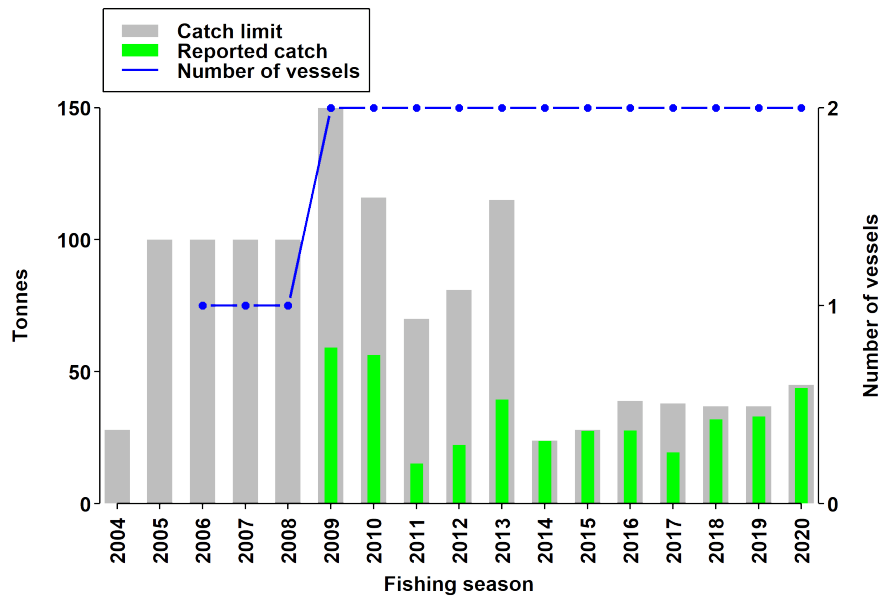


Map of the management areas within the CAMLR Convention Area. Subarea 48.4, is shaded in green.

Catch history



Catch and effort history in Subarea 48.4 for Patagonian toothfish.



Catch and effort history in Subarea 48.4 for Antarctic toothfish.

Summary table

Stock Status	Patagonian toothfish stock at 67% of B0
Type of Fishery	Established
Fishing gear	Demersal longlines
Conservation Measure specific to this Summary	CM 41-03

Additional Conservation Measures

In addition to [Conservation Measures](#) that apply to all Areas and all Species, the following Conservation Measures address wider environmental considerations in this fishery:

Description	Species	Area	Conservation Measure
Monthly Fine-Scale Biological Data Reporting System for Trawl, Longline and Pot Fisheries	All Species	All Areas	CM 23-05
Minimisation of the incidental mortality of seabirds in the course of longline fishing or longline fishing research in the Convention Area	All Species	All Areas	CM 25-02

Additional Resources

- Fishery Report: [pdf](#), [html](#)
- Species Description for Patagonian Toothfish: [pdf](#), [html](#)
- Species Description for Antarctic Toothfish: [pdf](#), [html](#)
- [Fisheries Documents Browser](#)