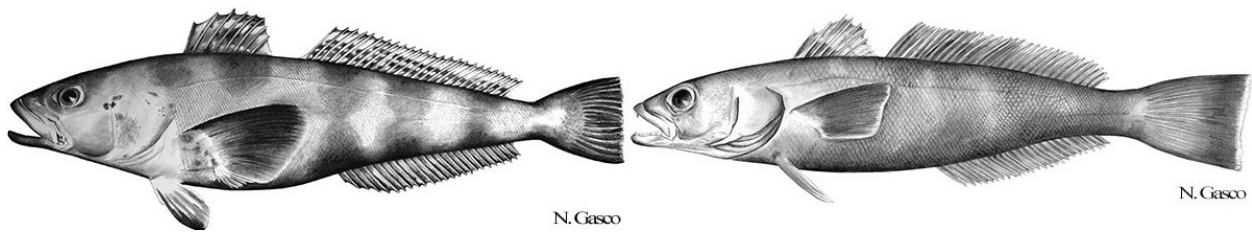


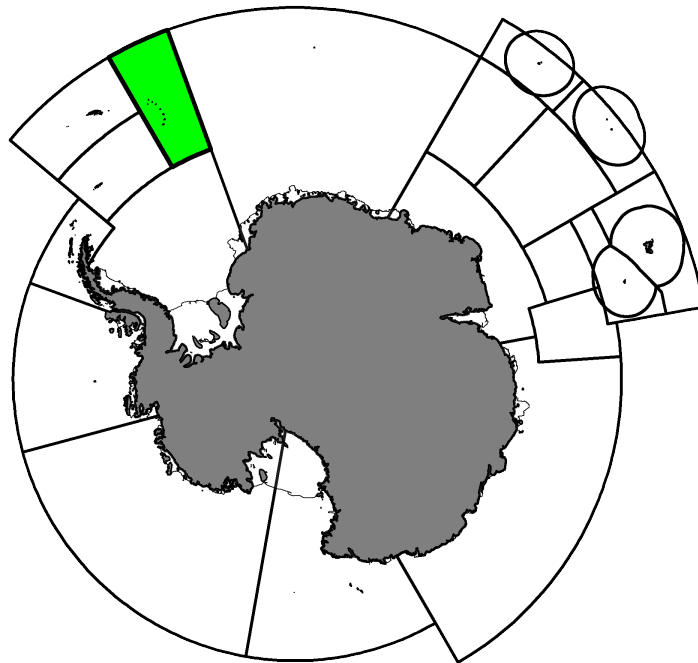
# Fishery Summary 2024: *Dissostichus eleginoides* and *Dissostichus mawsoni* in Subarea 48.4

CCAMLR Secretariat

07 April 2025

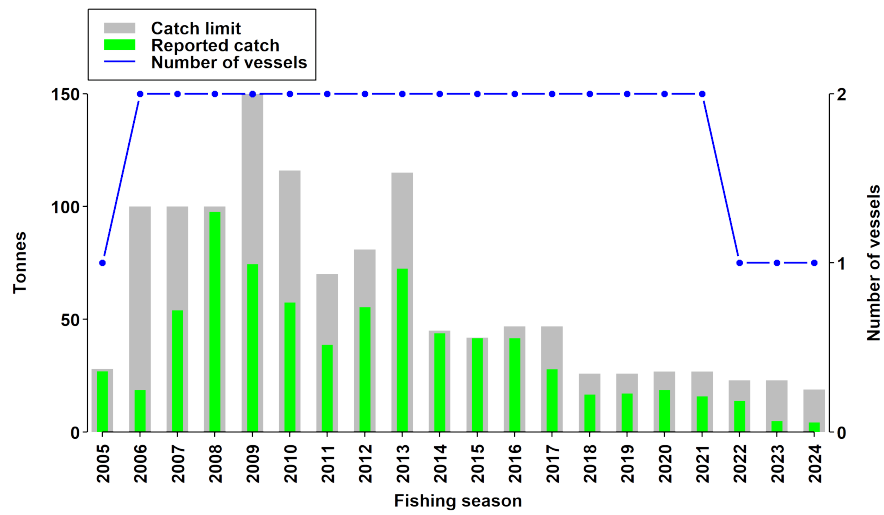


Antarctic toothfish *Dissostichus mawsoni* Norman, 1937, and Patagonian toothfish *Dissostichus eleginoides* Smitt, 1898.

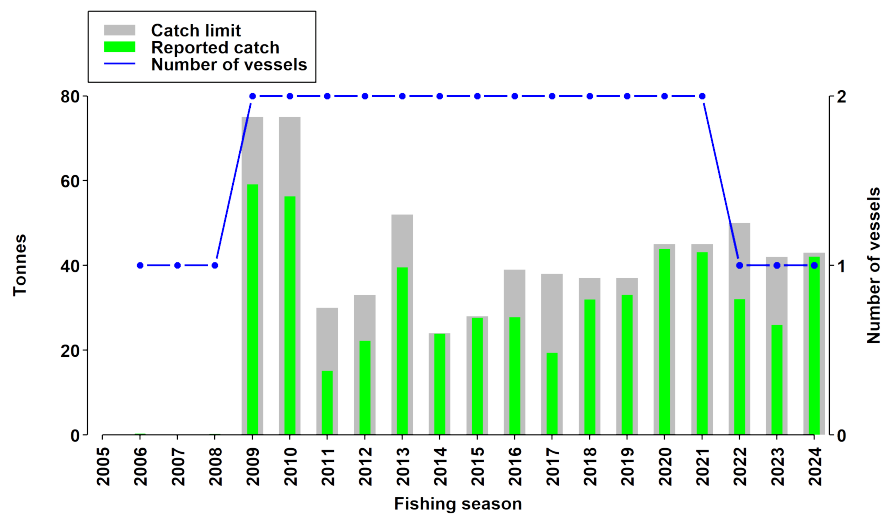


Map of the management areas within the CAMLR Convention Area. Subarea 48.4, is shaded in green. Coastlines and ice shelves: UK Polar Data Centre/BAS and Natural Earth. Projection: EPSG 6932.

## Catch history



Catch and effort history in Subarea 48.4 for Patagonian toothfish.



Catch and effort history in Subarea 48.4 for Antarctic toothfish.

## Summary table

|   |   |
|---|---|
| <b>Stock Status</b>   |   |
| <i>D. eleginoides</i>   | Spawning stock at 59.5% of B0 (B0=914 tonnes)       |
| <i>D. mawsoni</i>   | Biomass estimated at 968 tonnes (Chapman 5-yr mean) |
| <b>Classification of Fishery</b>  | Established   |
| <b>Fishing gear</b>   | Demersal longlines                                  |
| <b>Conservation Measure specific to this fishery</b> <a href="#">CM 41-03</a> |   |

## Additional Conservation Measures

In addition to [Conservation Measures](#) that apply to all Areas and all Species, the following Conservation Measures address wider environmental considerations in this fishery:

| Description  | Species     | Area      | Conservation Measure     |
|--|-------------|-----------|--------------------------|
| Minimisation of the incidental mortality of seabirds in the course of longline fishing or longline fishing research in the Convention Area | All Species | All Areas | <a href="#">CM 25-02</a> |

## Additional Resources

- Fishery Report: [pdf](#), [html](#)
- Stock Assessment Reports: [pdf](#)
- Stock Annex for Patagonian Toothfish: [pdf](#)
- Species Description for Patagonian Toothfish: [pdf](#), [html](#)
- Species Description for Antarctic Toothfish: [pdf](#), [html](#)
- [Fisheries Documents Browser](#)