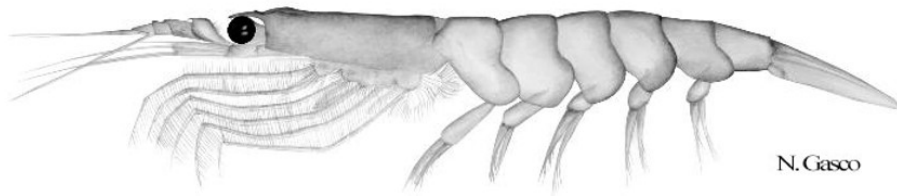


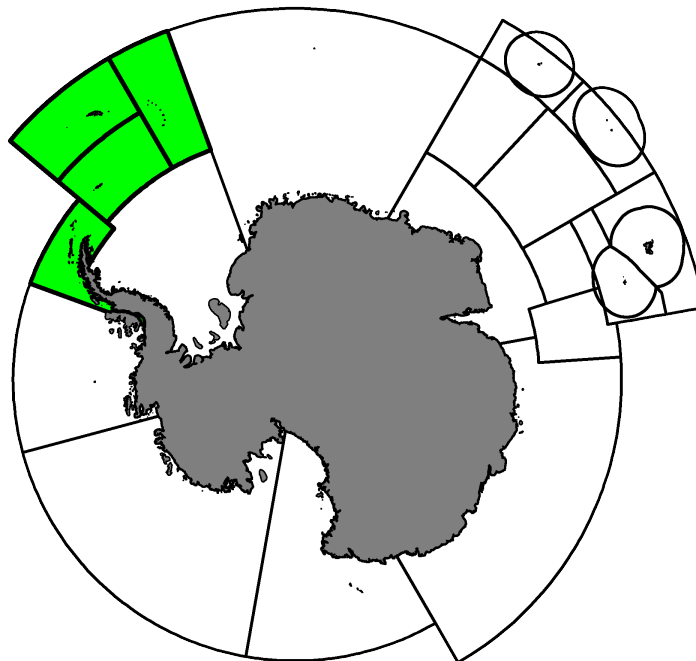
# Fishery Summary 2022: *Euphausia superba* in Area 48

CCAMLR Secretariat

17 March 2023

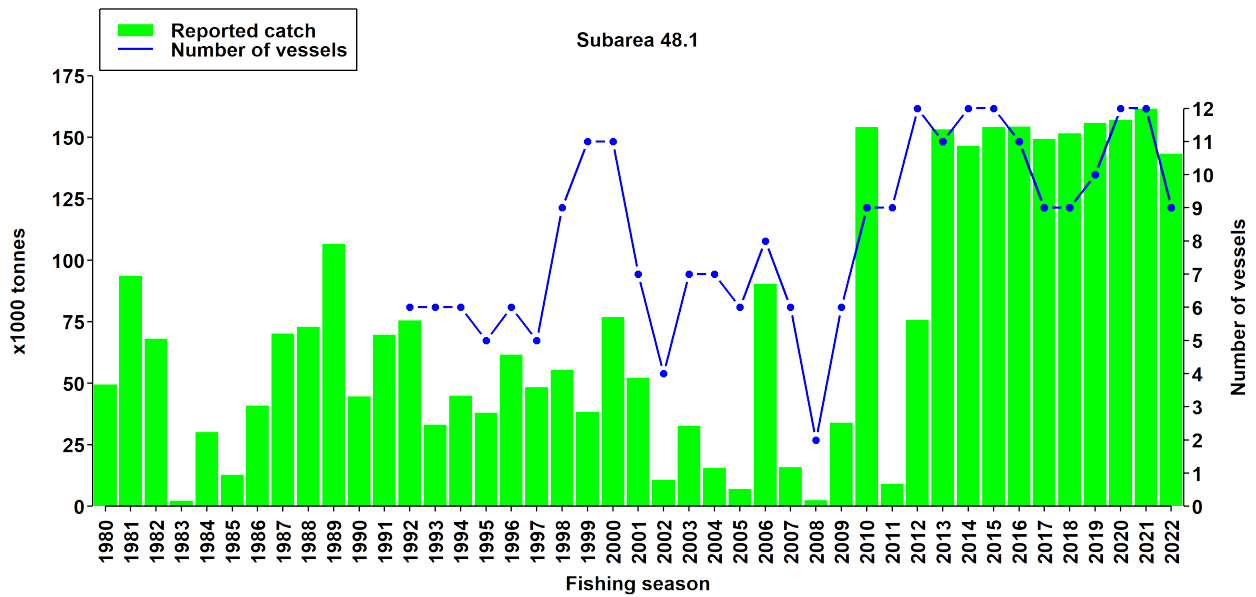


Antarctic krill, *Euphausia superba* Dana, 1850.

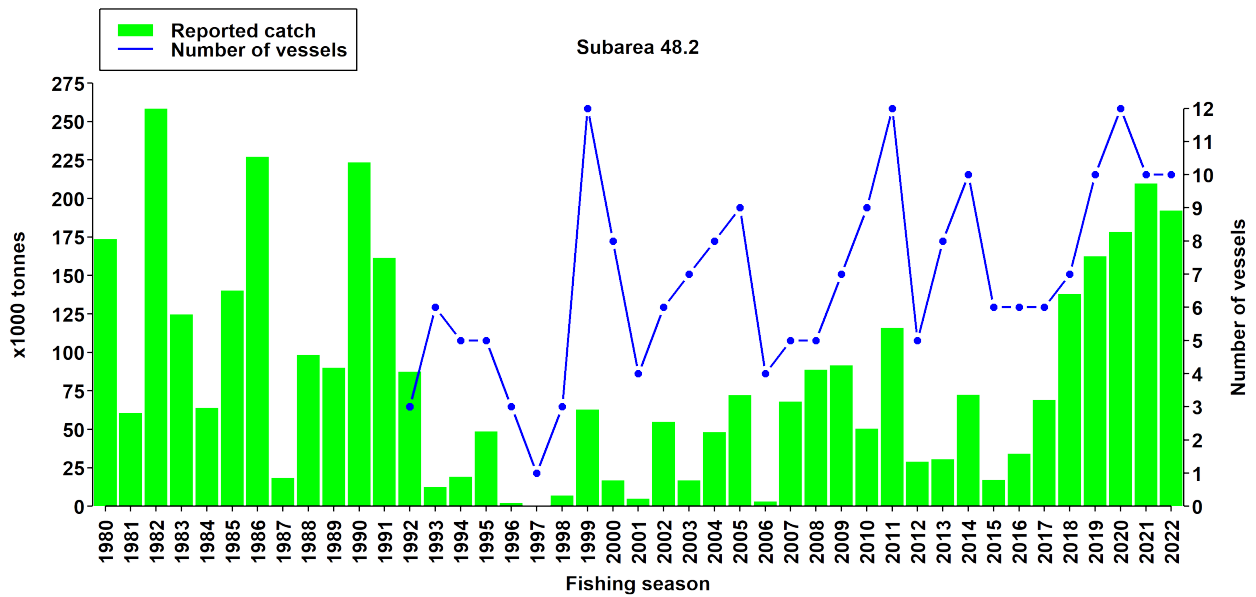


Map of the management areas within the CAMLR Convention Area. Subareas 48.1 to 48.4, are shaded in green.

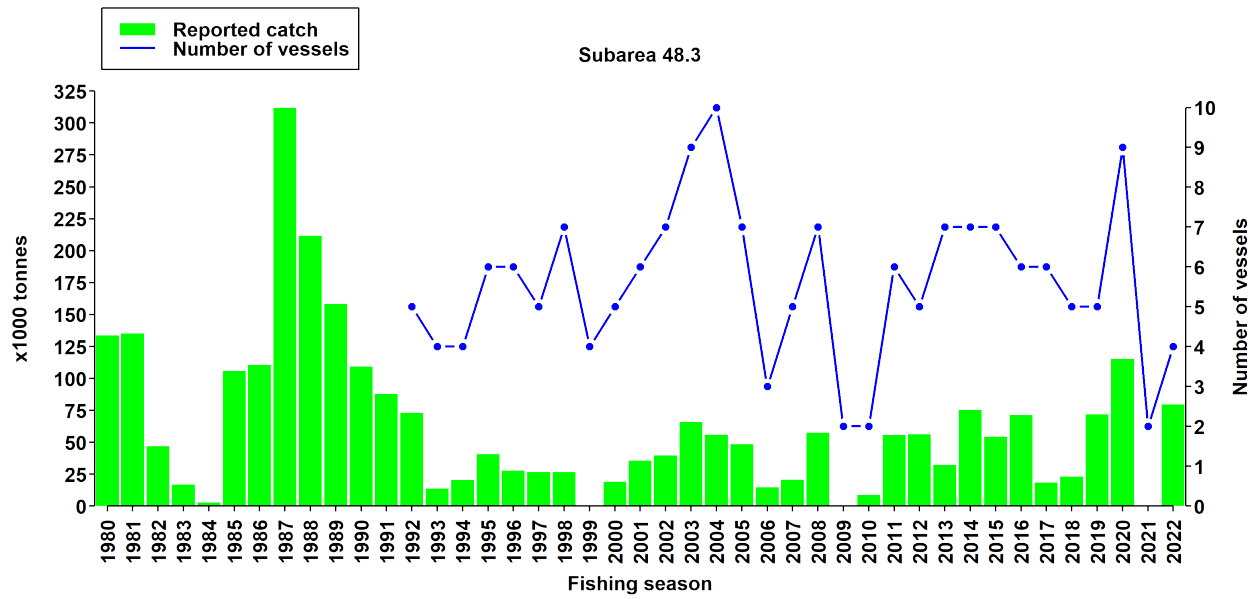
## Catch history



Catch and effort history in Subarea 48.1. The number of active vessels before 1992 is uncertain.



Catch and effort history in Subarea 48.2. The number of active vessels before 1992 is uncertain.



Catch and effort history in Subarea 48.3. The number of active vessels before 1992 is uncertain.

### Summary table

<b>Stock Status</b>	<a href="#">Stock assessment in development</a>
<b>Classification of Fishery</b>	Established
<b>Fishing gear</b>	Midwater trawl
<b>Conservation Measure specific to this fishery</b>	<a href="#">CM 51-01</a>

## Additional Conservation Measures

In addition to [Conservation Measures](#) that apply to all Areas and all Species, the following Conservation Measures address wider environmental considerations in this fishery:

Description	Species	Area	Conservation Measure
Notifications of intent to participate in a fishery for <i>Euphausia superba</i>	<i>Euphausia superba</i>	All Areas	<a href="#">CM 21-03</a>
Data Reporting System for <i>Euphausia superba</i> fisheries	<i>Euphausia superba</i>	All Areas	<a href="#">CM 23-06</a>
Precautionary catch limitations on <i>Euphausia superba</i> in Statistical Subareas 48.1, 48.2, 48.3 and 48.4	<i>Euphausia superba</i>	Subarea 48.1, Subarea 48.2, Subarea 48.3, Subarea 48.4	<a href="#">CM 51-01</a>
Precautionary Catch Limitation on <i>Euphausia superba</i> in Statistical Division 58.4.1	<i>Euphausia superba</i>	Division 58.4.1	<a href="#">CM 51-02</a>
Precautionary Catch Limitation on <i>Euphausia superba</i> in Statistical Division 58.4.2	<i>Euphausia superba</i>	Division 58.4.2	<a href="#">CM 51-03</a>
General measure for exploratory fisheries for <i>Euphausia superba</i> in the Convention Area in the 2022/23 season	<i>Euphausia superba</i>	All Areas	<a href="#">CM 51-04</a>
General measure for scientific observation in fisheries for <i>Euphausia superba</i>	<i>Euphausia superba</i>	All Areas	<a href="#">CM 51-06</a>
Interim distribution of the trigger level in the fishery for <i>Euphausia superba</i> in Statistical Subareas 48.1, 48.2, 48.3 and 48.4	<i>Euphausia superba</i>	Subarea 48.1, Subarea 48.2, Subarea 48.3, Subarea 48.4	<a href="#">CM 51-07</a>

## Additional Resources

- Fishery Report: [pdf](#), [html](#)
- Management approach: [pdf](#)
- Species Description: [pdf](#), [html](#)
- [Fisheries Documents Browser](#)