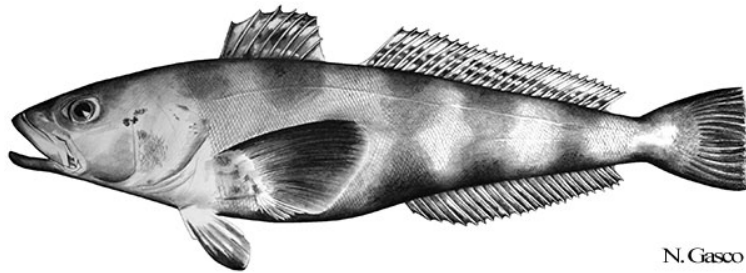


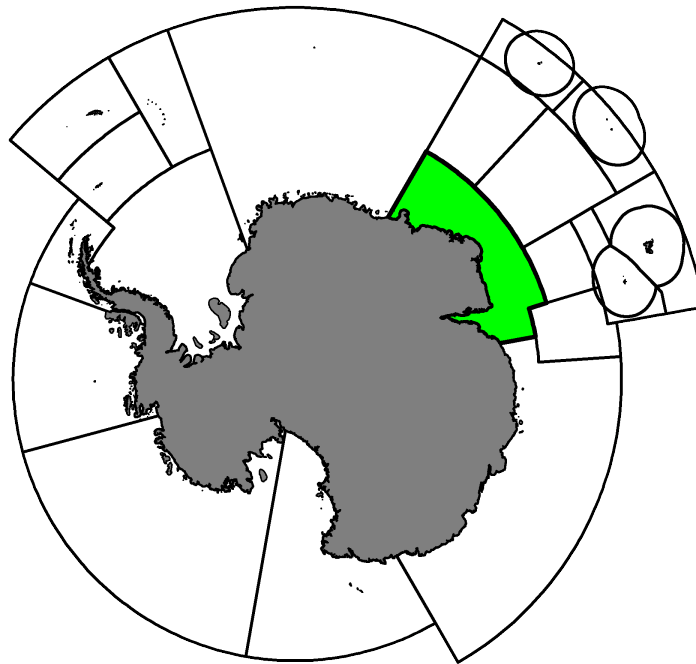
Fishery Summary 2022: *Dissostichus mawsoni* in Division 58.4.2

CCAMLR Secretariat

17 March 2023

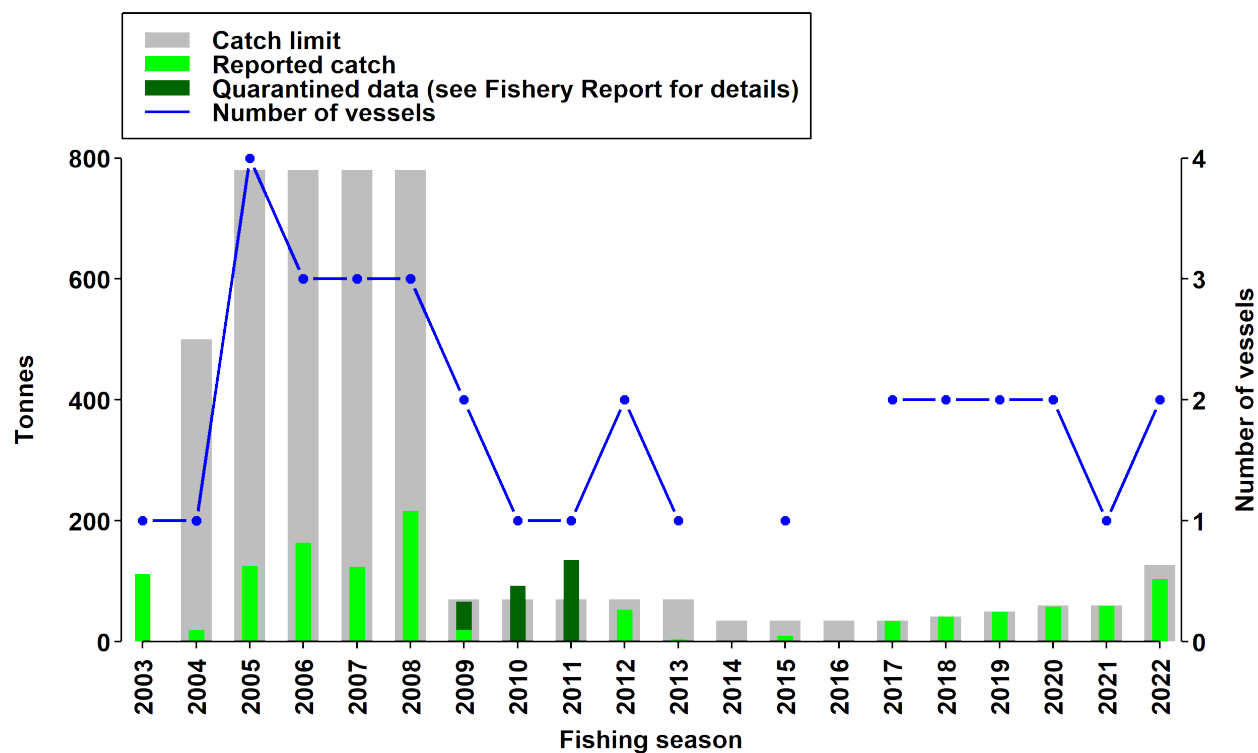


Antarctic Toothfish, *Dissostichus mawsoni* Norman, 1937.



Map of the management areas within the CAMLR Convention Area. Division 58.4.2 is shaded in green.

Catch history



Catch and effort history in Division 58.4.2.

Summary table

Stock Status	Data limited
Classification of Fishery	Exploratory
Fishing gear	Demersal longlines
Conservation Measure specific to this fishery	CM 41-05

Additional Conservation Measures

In addition to [Conservation Measures](#) that apply to all Areas and all Species, the following Conservation Measures address wider environmental considerations in this fishery:

Description	Species	Area	Conservation Measure
Exploratory fisheries	All Species	All Areas	CM 21-02
Monthly Fine-Scale Biological Data Reporting System for Trawl, Longline and Pot Fisheries	All Species	All Areas	CM 23-05
Daily Catch and Effort Reporting System for Exploratory Fisheries, with the exception of exploratory krill fisheries	All Species	All Areas	CM 23-07
Minimisation of the incidental mortality of seabirds in the course of longline fishing or longline fishing research in the Convention Area	All Species	All Areas	CM 25-02
Limitation of by-catch in new and exploratory fisheries in the 2022/23 season	All Species	All Areas	CM 33-03
General measures for exploratory fisheries for <i>Dissostichus</i> spp. in the Convention Area in the 2022/23 season	<i>Dissostichus</i> spp.	All Areas	CM 41-01

Additional Resources

- Fishery Report: [pdf](#), [html](#)
- Species Description: [pdf](#), [html](#)
- Management approach: [pdf](#), [html](#)
- [Fisheries Documents Browser](#)