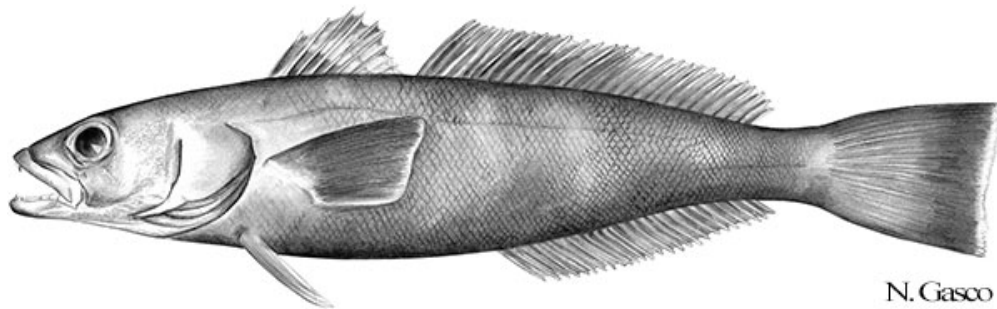


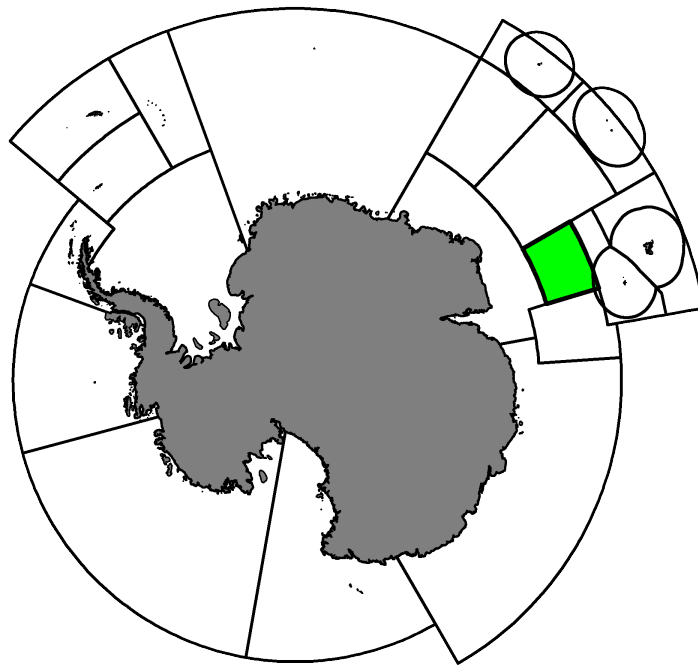
Fishery Summary 2020: *Dissostichus eleginoides* in Division  
58.4.3a

CCAMLR Secretariat

16 March 2021

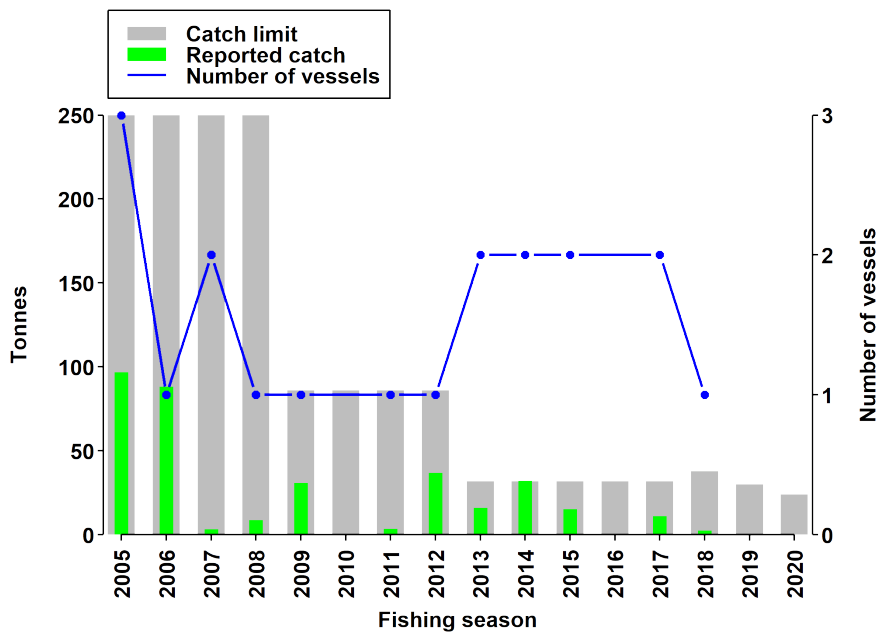


Patagonian Toothfish, *Dissostichus eleginoides* Smitt, 1898.



Map of the management areas within the CAMLR Convention Area. Division 58.4.3a is shaded in green.

## Catch history



Catch and effort history in Division 58.4.3a.

## Summary table

Stock Status	<a href="#">Data limited</a>
Type of Fishery	Exploratory
Fishing gear	Demersal longlines
Conservation Measure specific to this Summary	<a href="#">CM 41-06</a>

## Additional Conservation Measures

In addition to [Conservation Measures](#) that apply to all Areas and all Species, the following Conservation Measures address wider environmental considerations in this fishery:

Description	Species	Area	Conservation Measure
Exploratory fisheries	All Species	All Areas	<a href="#">CM 21-02</a>
Monthly Fine-Scale Biological Data Reporting System for Trawl, Longline and Pot Fisheries	All Species	All Areas	<a href="#">CM 23-05</a>
Daily Catch and Effort Reporting System for Exploratory Fisheries, with the exception of exploratory krill fisheries	All Species	All Areas	<a href="#">CM 23-07</a>
Minimisation of the incidental mortality of seabirds in the course of longline fishing or longline fishing research in the Convention Area	All Species	All Areas	<a href="#">CM 25-02</a>
Limitation of by-catch in new and exploratory fisheries in the 2018/19 season	All Species	All Areas	<a href="#">CM 33-03</a>
General measures for exploratory fisheries for <i>Dissostichus</i> spp. in the Convention Area in the 2018/19 season	<i>Dissostichus</i> spp	All Areas	<a href="#">CM 41-01</a>

## Additional Resources

- Fishery Report: [pdf](#), [html](#)
- Species Description: [pdf](#), [html](#)
- Management approach: [pdf](#), [html](#)
- [Fisheries Documents Browser](#)