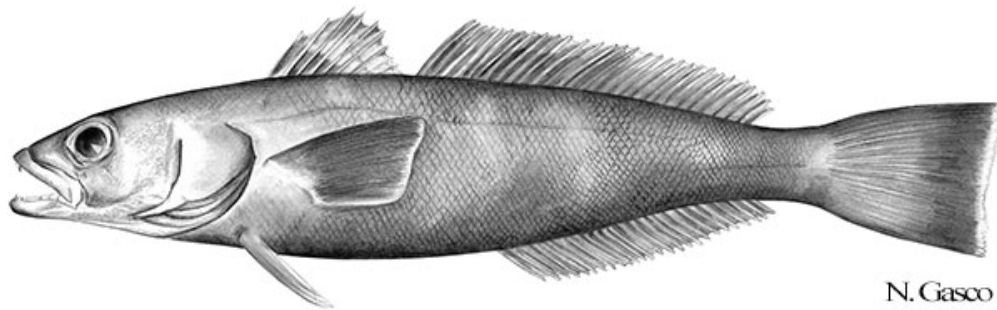


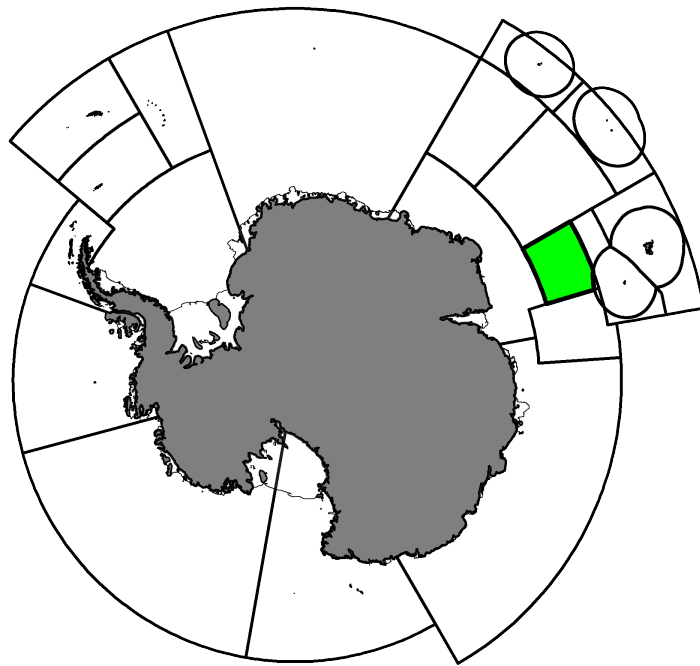
Fishery Summary 2024: *Dissostichus eleginoides* in Division 58.4.3a

CCAMLR Secretariat

07 April 2025

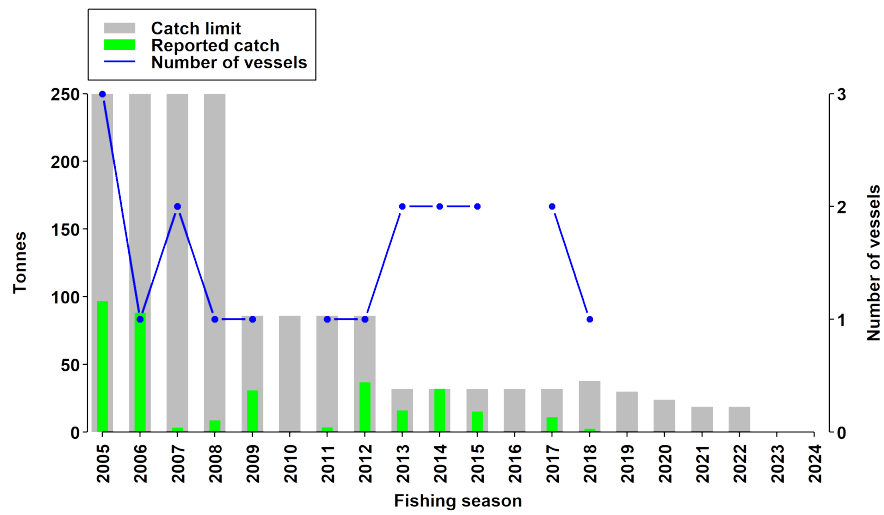


Patagonian Toothfish, *Dissostichus eleginoides* Smitt, 1898.



Map of the management areas within the CAMLR Convention Area. Division 58.4.3a is shaded in green.
Coastlines and ice shelves: UK Polar Data Centre/BAS and Natural Earth. Projection: EPSG 6932.

Catch history



Catch and effort history in Division 58.4.3a.

Summary table

Stock Status	Data limited
Classification of Fishery	Exploratory
Fishing gear	Demersal longlines
Conservation Measure specific to this fishery	CM 41-06

Additional Conservation Measures

In addition to [Conservation Measures](#) that apply to all Areas and all Species, the following Conservation Measures address wider environmental considerations in this fishery:

Description	Species	Area	Conservation Measure
Exploratory fisheries	All Species	All Areas	CM 21-02
Daily Catch and Effort Reporting System for Exploratory Fisheries, with the exception of exploratory krill fisheries	All Species	All Areas	CM 23-07
Minimisation of the incidental mortality of seabirds in the course of longline fishing or longline fishing research in the Convention Area	All Species	All Areas	CM 25-02
Limitation of by-catch in new and exploratory fisheries in the 2023/24 season	All Species	All Areas	CM 33-03
General measures for exploratory fisheries for <i>Dissostichus</i> spp. in the Convention Area in the 2023/24 season	<i>Dissostichus</i> spp.	All Areas	CM 41-01

Additional Resources

- Fishery Report: [pdf](#), [html](#)
- Species Description: [pdf](#), [html](#)
- Management approach: [pdf](#), [html](#)
- [Fisheries Documents Browser](#)