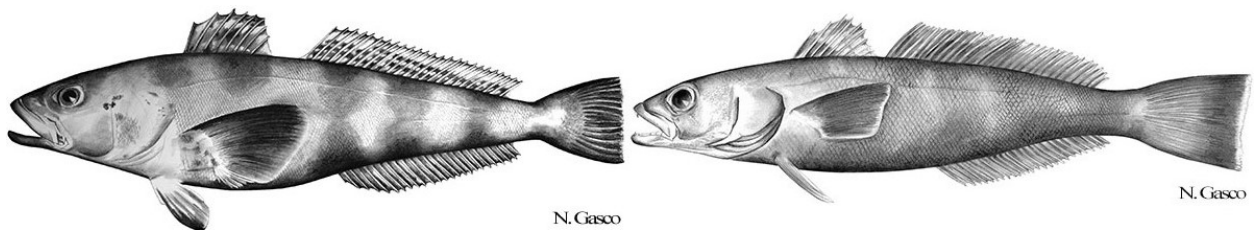


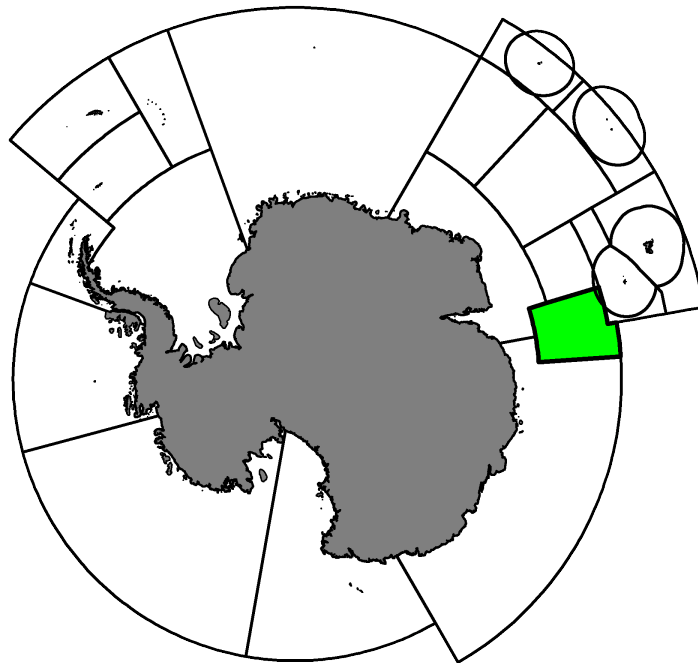
Fishery Summary 2021: *Dissostichus eleginoides* and *Dissostichus mawsoni* in Division 58.4.3b

CCAMLR Secretariat

26 April 2022

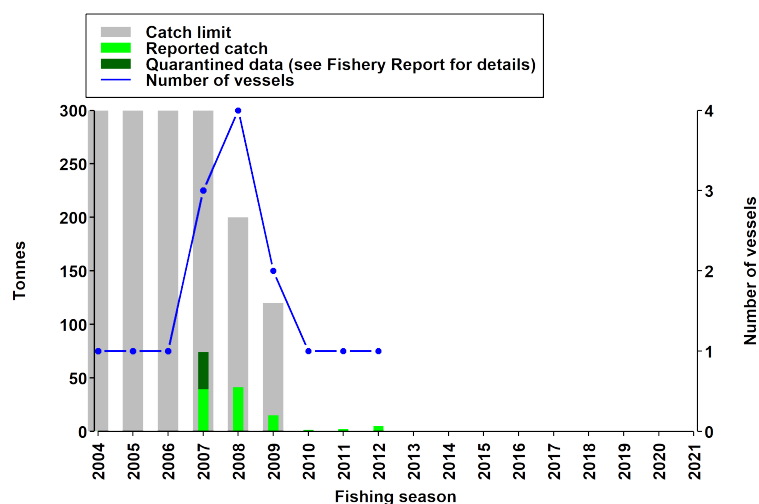


Antarctic toothfish *Dissostichus mawsoni* Norman, 1937, and Patagonian toothfish *Dissostichus eleginoides* Smitt, 1898.

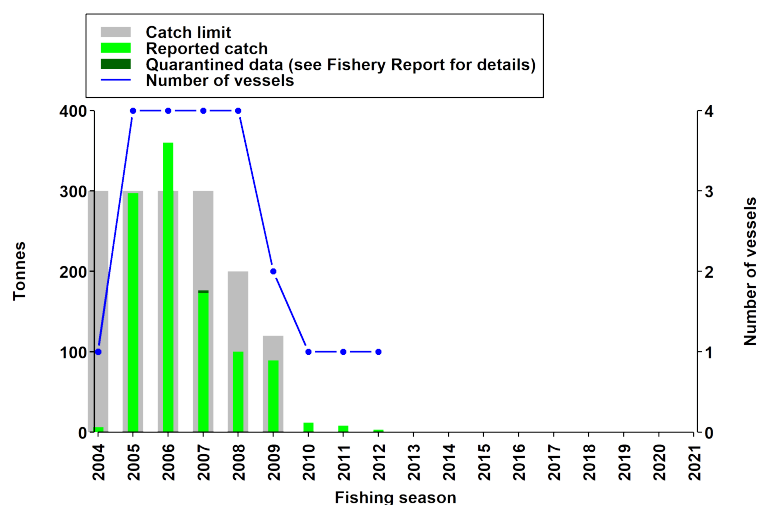


Map of the management areas within the CCAMLR Convention Area. Division 58.4.3b, is shaded in green.

Catch history



Catch and effort history in Division 58.4.3b for Patagonian toothfish.



Catch and effort history in Division 58.4.3b for Antarctic toothfish.

Summary table

Stock Status	Not assessed
Classification of Fishery	Exploratory
Fishing gear	Demersal longlines
Conservation Measure specific to this fishery	CM 41-07

Additional Conservation Measures

In addition to [Conservation Measures](#) that apply to all Areas and all Species, the following Conservation Measures address wider environmental considerations in this fishery:

Description	Species	Area	Conservation Measure
Notification that Members are considering initiating a new fishery	All Species	All Areas	CM 21-01
Exploratory fisheries	All Species	All Areas	CM 21-02
Monthly Fine-Scale Biological Data Reporting System for Trawl, Longline and Pot Fisheries	All Species	All Areas	CM 23-05
Longline weighting for seabird conservation	All Species	All Areas	CM 24-02
Minimisation of the incidental mortality of seabirds in the course of longline fishing or longline fishing research in the Convention Area	All Species	All Areas	CM 25-02
Limitation of by-catch in new and exploratory fisheries in the 2021/22 season	All Species	All Areas	CM 33-03
General measures for exploratory fisheries for Dissostichus spp. in the Convention Area in the 2021/22 season	Dissostichus spp.	All Areas	CM 41-01

Additional Resources

- Fishery Report: [pdf](#), [html](#)
- Species Description for Patagonian Toothfish: [pdf](#), [html](#)
- Species Description for Antarctic Toothfish: [pdf](#), [html](#)
- [Fisheries Documents Browser](#)