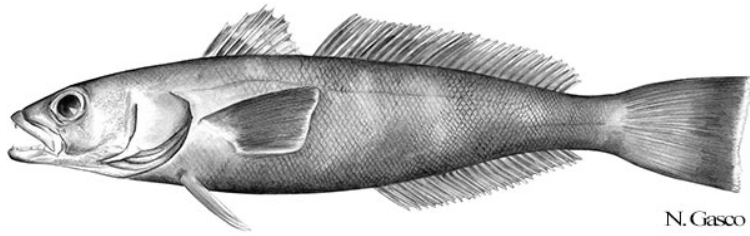


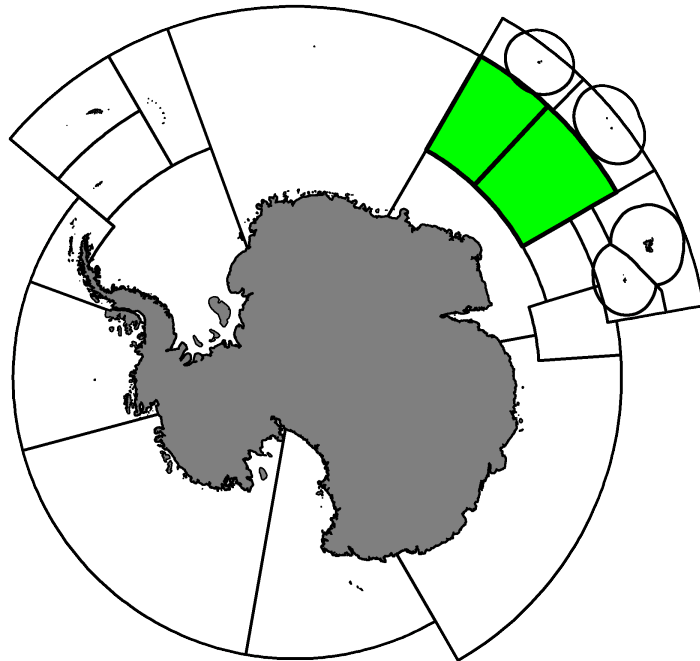
Fishery Summary 2020: *Dissostichus eleginoides* in Divisions
58.4.4a and 58.4.4b

CCAMLR Secretariat

16 March 2021

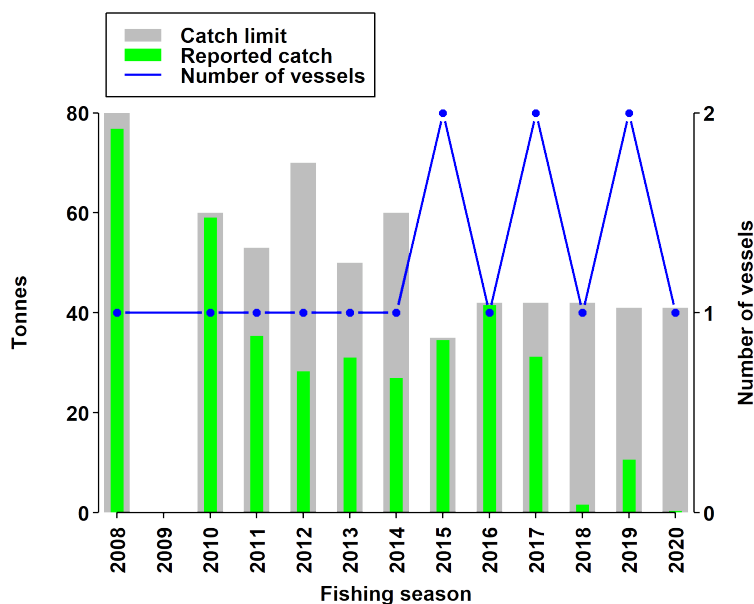


Patagonian Toothfish, *Dissostichus eleginoides* Smitt, 1898.



Map of the management areas within the CAMLR Convention Area. Divisions 58.4.4a and 58.4.4b are shaded in green.

Catch history



Catch and effort history in Divisions 58.4.4a and 58.4.4b for Patagonian toothfish.

Summary table

Stock Status	Data limited
Type of Fishery	Research only
Fishing gear	Demersal longlines
Conservation Measure specific to this Summary	CM 33-02

Additional Conservation Measures

In addition to [Conservation Measures](#) that apply to all Areas and all Species, the following Conservation Measures address wider environmental considerations in this fishery:

Description	Species	Area	Conservation Measure
The application of conservation measures to scientific research	All Species	All Areas	CM 24-01
Fishing for research purposes pursuant to Conservation Measure 24-01	All Species	All Areas	CM 24-05

Additional Resources

- Fishery Report: [pdf](#), [html](#)
- Species Description: [pdf](#), [html](#)

- Management approach: [pdf](#), [html](#)
- [Fisheries Documents Browser](#)