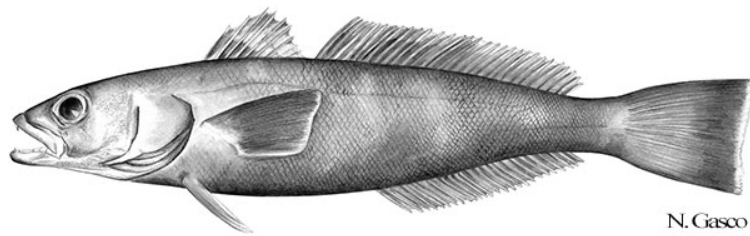


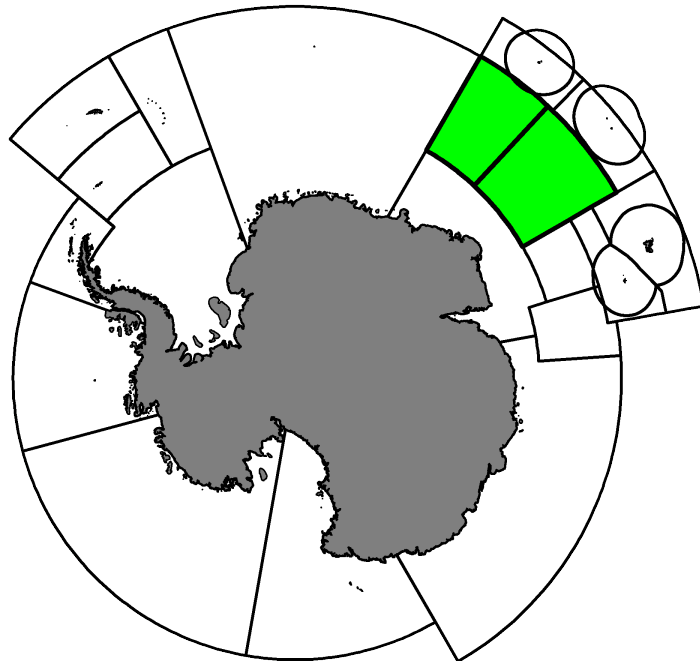
# Fishery Summary 2021: *Dissostichus eleginoides* in Divisions 58.4.4a and 58.4.4b

CCAMLR Secretariat

26 April 2022

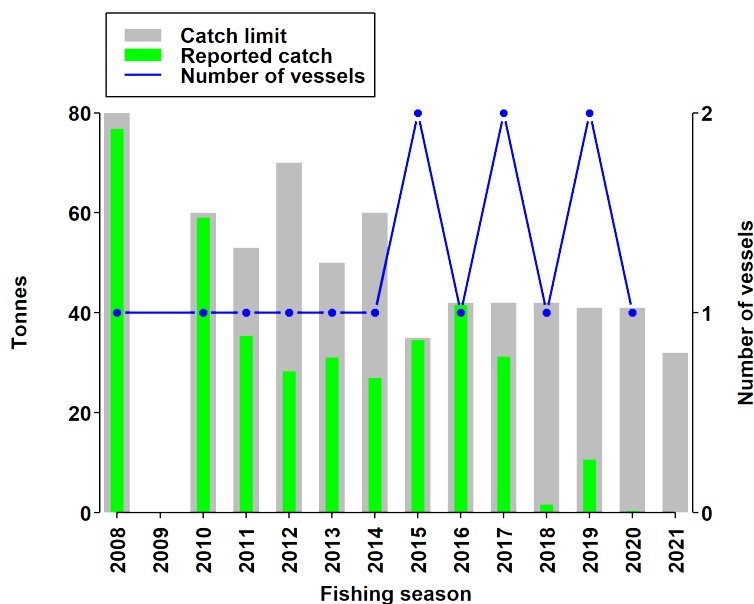


Patagonian toothfish, *Dissostichus eleginoides* Smitt, 1898.



Map of the management areas within the CAMLR Convention Area. Divisions 58.4.4a and 58.4.4b are shaded in green.

## Catch history



Catch and effort history in Divisions 58.4.4a and 58.4.4b for Patagonian toothfish.

## Summary table

|   |                              |
|---|------------------------------|
| Stock Status                                  | <a href="#">Data limited</a> |
| Classification of Fishery                     | Research only                |
| Fishing gear                                  | Demersal longlines           |
| Conservation Measure specific to this fishery | <a href="#">CM 24-05</a>     |

## Additional Conservation Measures

In addition to [Conservation Measures](#) that apply to all Areas and all Species, the following Conservation Measures address wider environmental considerations in this fishery:

| Description  | Species     | Area      | Conservation Measure     |
|--|-------------|-----------|--------------------------|
| The application of conservation measures to scientific research      | All Species | All Areas | <a href="#">CM 24-01</a> |
| Fishing for research purposes pursuant to Conservation Measure 24-01 | All Species | All Areas | <a href="#">CM 24-05</a> |

## Additional Resources

- Fishery Report: [pdf](#), [html](#)
- Species Description: [pdf](#), [html](#)

- Management approach: [pdf](#), [html](#)
- [Fisheries Documents Browser](#)