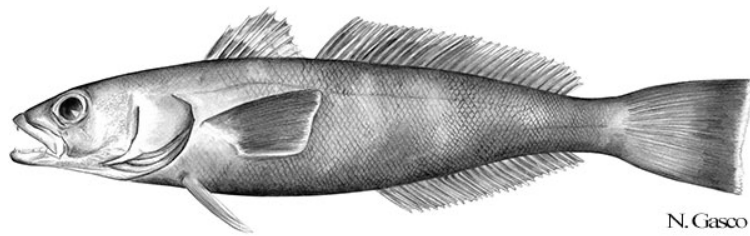


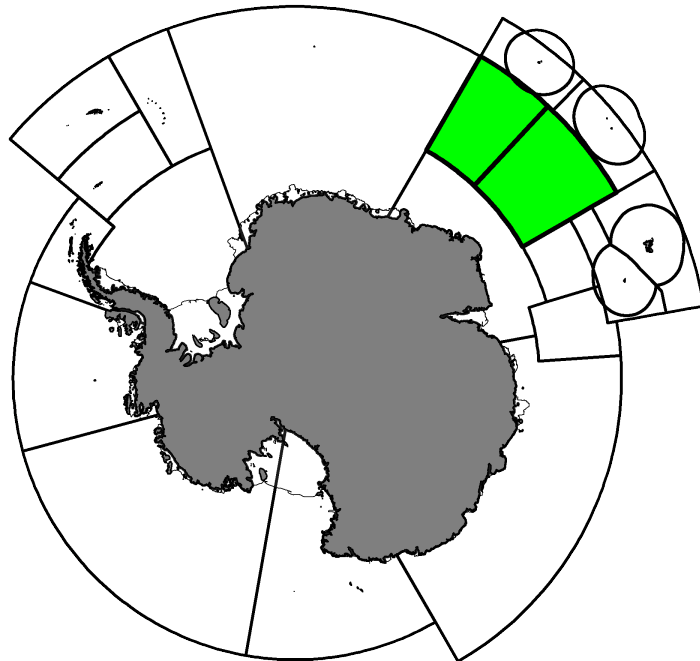
# Fishery Summary 2024: *Dissostichus eleginoides* in Divisions 58.4.4a and 58.4.4b

CCAMLR Secretariat

07 April 2025

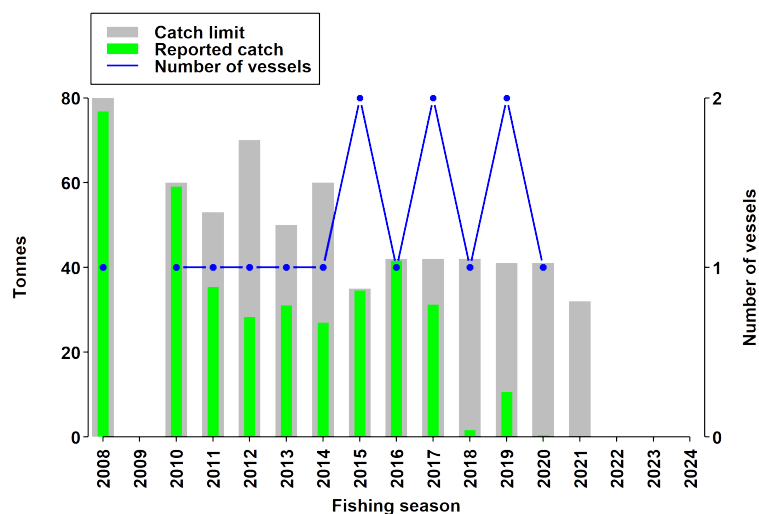


Patagonian toothfish, *Dissostichus eleginoides* Smitt, 1898.



Map of the management areas within the CAMLR Convention Area. Divisions 58.4.4a and 58.4.4b are shaded in green. Coastlines and ice shelves: UK Polar Data Centre/BAS and Natural Earth. Projection: EPSG 6932.

## Catch history



Catch and effort history in Divisions 58.4.4a and 58.4.4b for Patagonian toothfish.

## Summary table

Stock Status	Data limited
Classification of Fishery	Research only
Fishing gear	Demersal longlines
Conservation Measure specific to this fishery	CM 24-05

## Additional Conservation Measures

In addition to [Conservation Measures](#) that apply to all Areas and all Species, the following Conservation Measures address wider environmental considerations in this fishery:

Description	Species	Area	Conservation Measure
The application of conservation measures to scientific research	All Species	All Areas	<a href="#">CM 24-01</a>
Fishing for research purposes pursuant to Conservation Measure 24-01	All Species	All Areas	<a href="#">CM 24-05</a>

## Additional Resources

- Fishery Report: [pdf](#), [html](#)
- Species Description: [pdf](#), [html](#)
- Management approach: [pdf](#), [html](#)
- [Fisheries Documents Browser](#)