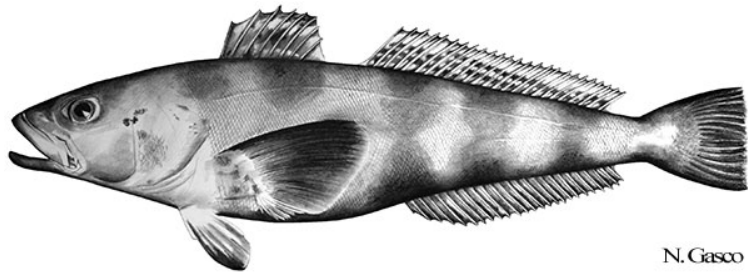


Fishery Summary 2020: *Dissostichus mawsoni* in Subarea 88.1

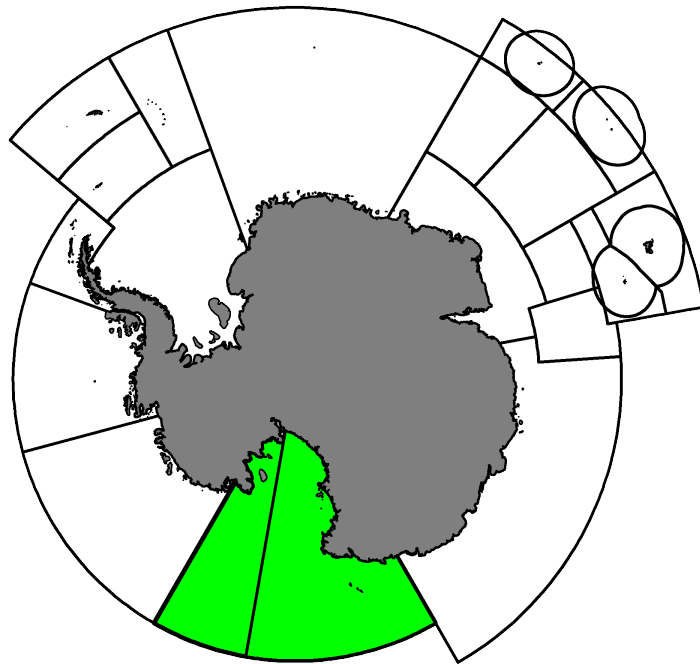
CCAMLR Secretariat

16 March 2021



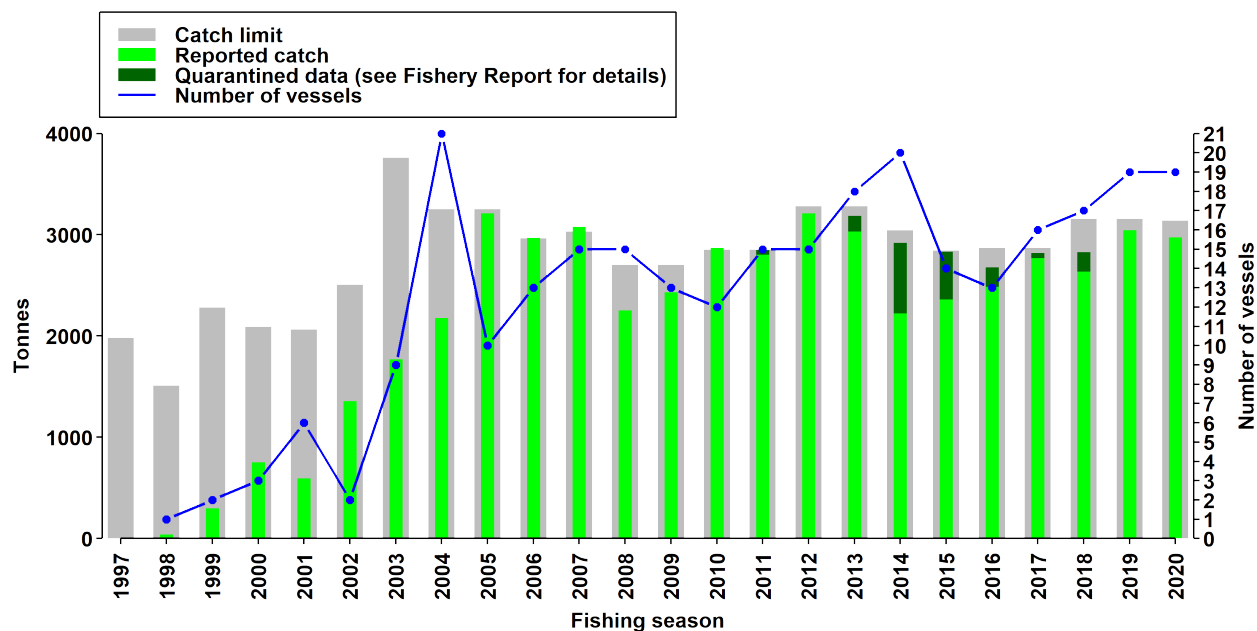
N. Gasco

Antarctic Toothfish, *Dissostichus mawsoni* Norman, 1937.



Map of the management areas within the CAMLR Convention Area. Subarea 88.1, SSRUs 882A and 882B, are shaded in green.

Catch history



Catch and effort history in Subarea 88.1, SSRUs 882A and 882B.

Summary table

Stock Status	Antarctic toothfish spawning stock at 66% of B0
Type of Fishery	Exploratory
Fishing gear	Demersal longlines
Conservation Measure specific to this Summary	CM 41-09

Additional Conservation Measures

In addition to [Conservation Measures](#) that apply to all Areas and all Species, the following Conservation Measures address wider environmental considerations in this fishery:

Description	Species	Area	Conservation Measure
Exploratory fisheries	All Species	All Areas	CM 21-02
Monthly Fine-Scale Biological Data Reporting System for Trawl, Longline and Pot Fisheries	All Species	All Areas	CM 23-05
Daily Catch and Effort Reporting System for Exploratory Fisheries, with the exception of exploratory krill fisheries	All Species	All Areas	CM 23-07
Minimisation of the incidental mortality of seabirds in the course of longline fishing or longline fishing research in the Convention Area	All Species	All Areas	CM 25-02
General measures for exploratory fisheries for <i>Dissostichus</i> spp. in the Convention Area in the 2018/19 season	<i>Dissostichus</i> spp	All Areas	CM 41-01
Ross Sea region marine protected area	All Species	SSRU 88.2 A, SSRU 88.2 B, Subarea 88.1	CM 91-05

Additional Resources

- Fishery Report: [pdf](#), [html](#)
- Species Description: [pdf](#), [html](#)
- [Fisheries Documents Browser](#)