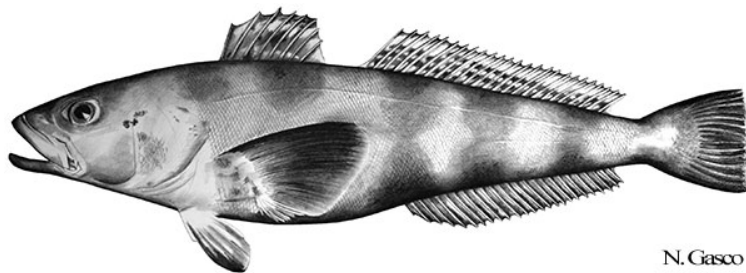


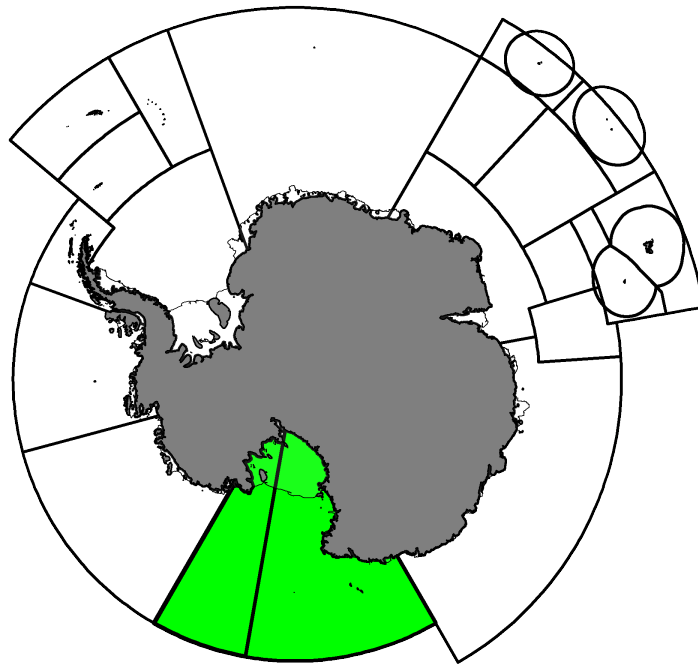
# Fishery Summary 2024: *Dissostichus mawsoni* in Subarea 88.1

CCAMLR Secretariat

07 April 2025

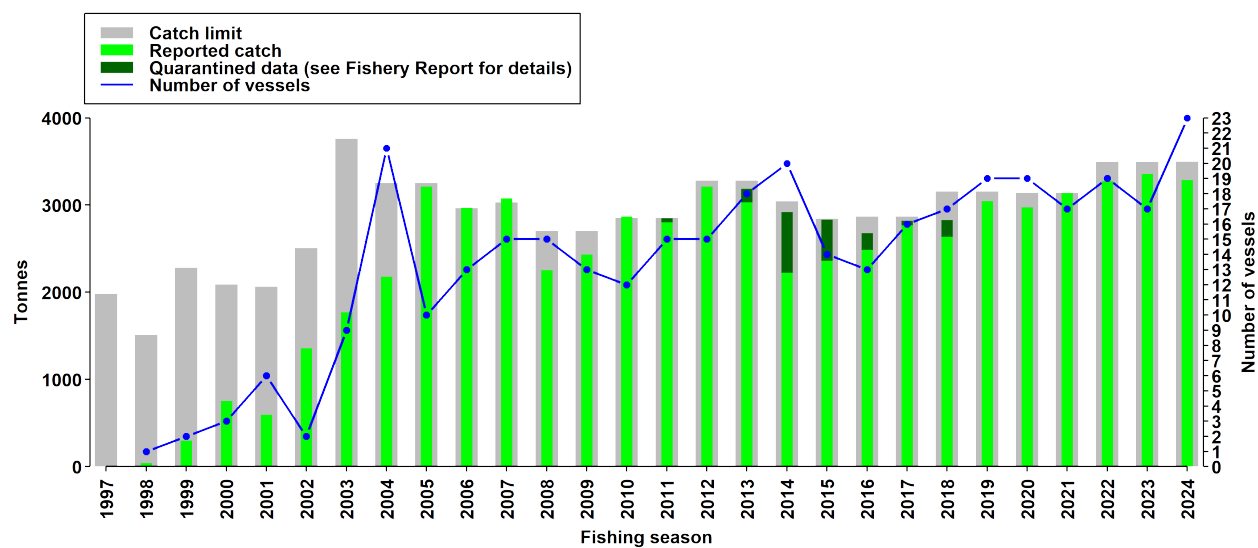


Antarctic Toothfish, *Dissostichus mawsoni* Norman, 1937.



Map of the management areas within the CAMLR Convention Area. Subarea 88.1, SSRUs 882A and 882B, are shaded in green. Coastlines and ice shelves: UK Polar Data Centre/BAS and Natural Earth. Projection: EPSG 6932.

## Catch history



Catch and effort history in Subarea 88.1, SSRUs 882A and 882B.

## Summary table

Stock Status	Spawning stock at 65.9% of B0 (B0=78438 tonnes)
Classification of Fishery	Exploratory
Fishing gear	Demersal longlines
Conservation Measure specific to this fishery	<a href="#">CM 41-09</a>

## Additional Conservation Measures

In addition to [Conservation Measures](#) that apply to all Areas and all Species, the following Conservation Measures address wider environmental considerations in this fishery:

Description	Species	Area	Conservation Measure
Exploratory fisheries	All Species	All Areas	<a href="#">CM 21-02</a>
Daily Catch and Effort Reporting System for Exploratory Fisheries, with the exception of exploratory krill fisheries	All Species	All Areas	<a href="#">CM 23-07</a>
Minimisation of the incidental mortality of seabirds in the course of longline fishing or longline fishing research in the Convention Area	All Species	All Areas	<a href="#">CM 25-02</a>
General measures for exploratory fisheries for <i>Dissostichus</i> spp. in the Convention Area in the 2023/24 season	<i>Dissostichus</i> spp.	All Areas	<a href="#">CM 41-01</a>
Ross Sea region marine protected area	All Species	Subarea 88.1, SSRU - Small-Scale Research Unit 88.2 A, SSRU - Small-Scale Research Unit 88.2 B	<a href="#">CM 91-05</a>

## Additional Resources

- Fishery Report: [pdf](#), [html](#)
- Species Description: [pdf](#), [html](#)
- Stock Assessment Report: [pdf](#)
- Stock Annex: [pdf](#)
- [Fisheries Documents Browser](#)