

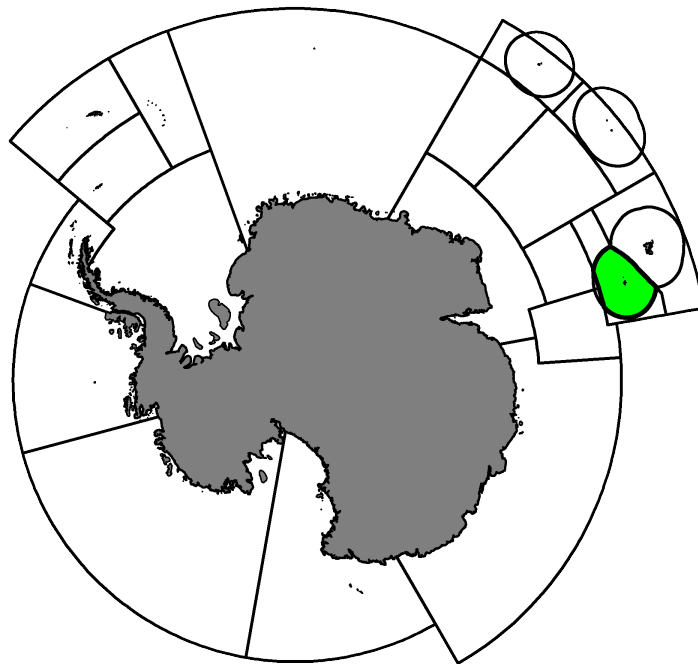
Fishery Summary 2020: *Champsocephalus gunnari* at Heard Island (Division 58.5.2)

CCAMLR Secretariat

16 March 2021

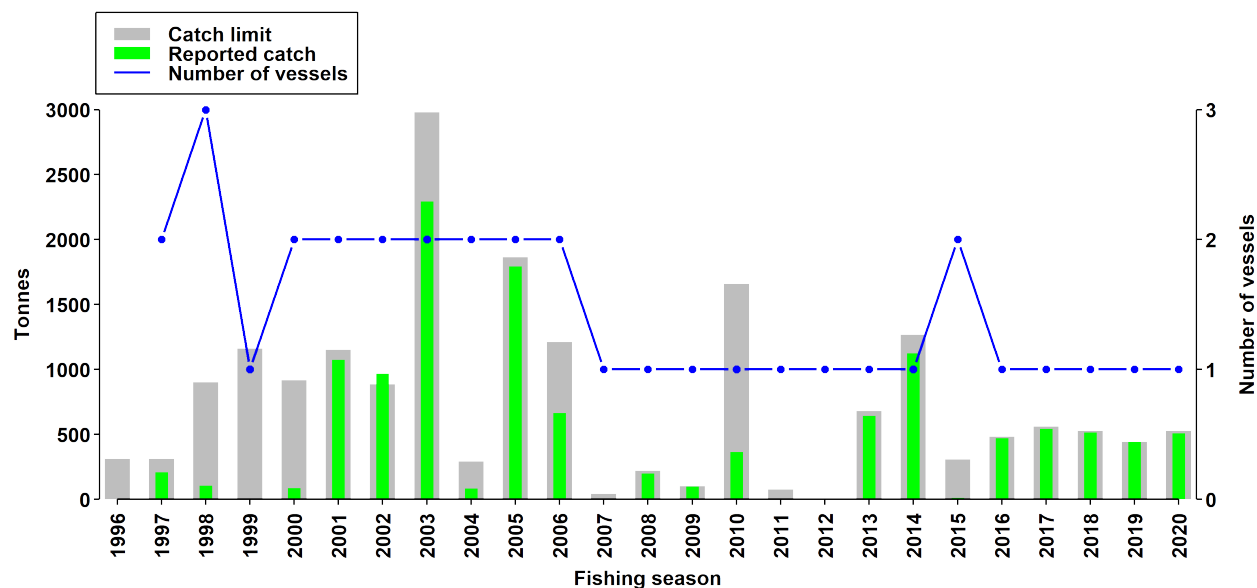


Mackerel icefish, *Champsocephalus gunnari* Lönnberg, 1905.



Map of the management areas within the CAMLR Convention Area. The region discussed in this summary is shaded in green.

Catch history



Catch and effort history.

Summary table

Stock Status	B0 estimate of 3724 tonnes
Type of Fishery	Established
Fishing gear	Midwater trawl
Conservation Measure specific to this Summary	CM 42-02

Additional Conservation Measures

In addition to [Conservation Measures](#) that apply to all Areas and all Species, the following Conservation Measures address wider environmental considerations in this fishery:

Description	Species	Area	Conservation Measure
Monthly Fine-Scale Biological Data Reporting System for Trawl, Longline and Pot Fisheries	All Species	All Areas	CM 23-05
Minimisation of the incidental mortality of seabirds and marine mammals in the course of trawl fishing in the Convention Area	All Species	All Areas	CM 25-03
Limitation of by-catch in Statistical Division 58.5.2 in the 2018/19 season	All Species	Division 58.5.2	CM 33-02

Additional Resources

- Fishery Report: [pdf](#), [html](#)
- Species Description: [pdf](#), [html](#)
- Stock Assessment Report: [pdf](#)
- Stock Annex: [pdf](#)
- [Fisheries Documents Browser](#)