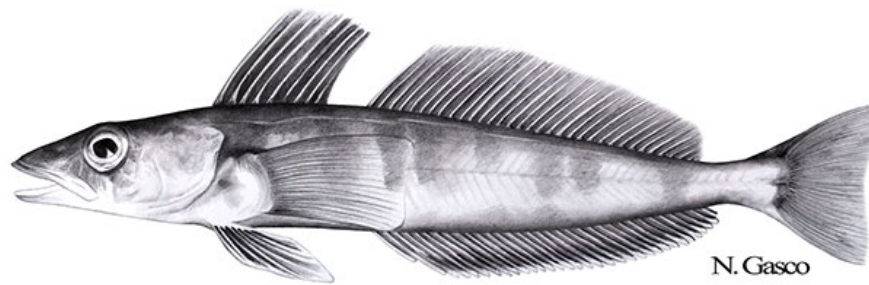


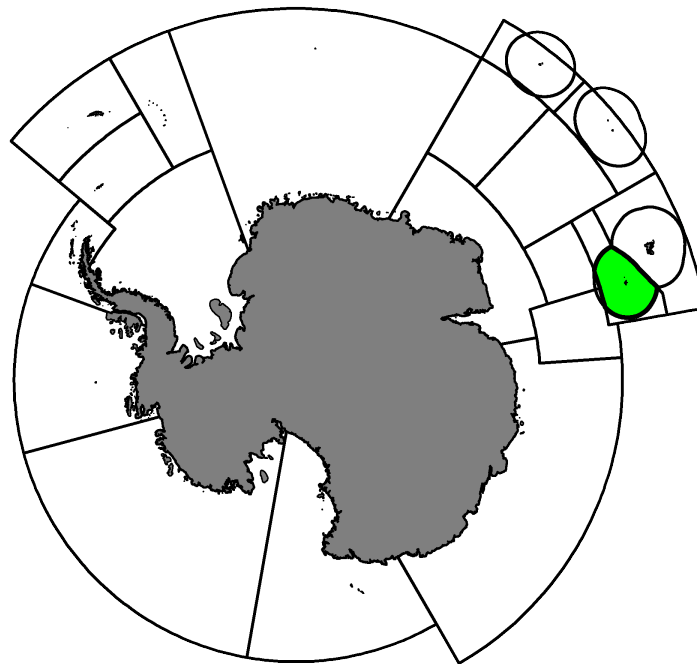
# Fishery Summary 2022: *Champsocephalus gunnari* at Heard Island (Division 58.5.2)

CCAMLR Secretariat

17 March 2023

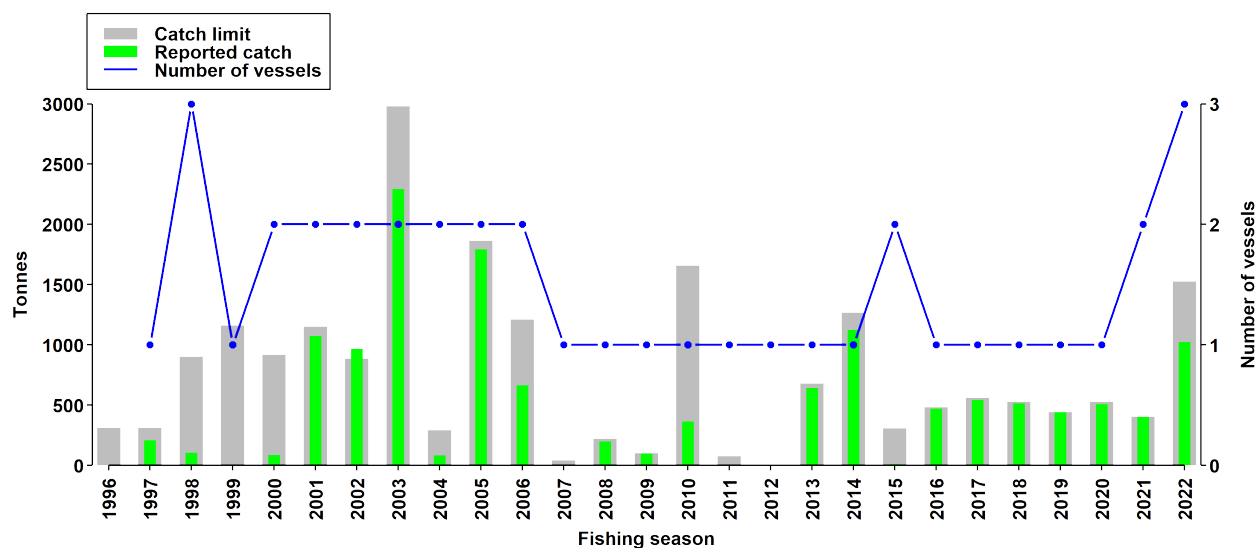


Mackerel icefish *Champsocephalus gunnari* Lönnberg, 1905.



Map of the management areas within the CAMLR Convention Area. The region discussed in this summary is shaded in green.

## Catch history



Catch and effort history.

## Summary table

<b>Stock Status</b>	Biomass estimated at 53162 tonnes
<b>Classification of Fishery</b>	Established
<b>Fishing gear</b>	Trawl
<b>Conservation Measure specific to this fishery</b>	<a href="#">CM 42-02</a>

## Additional Conservation Measures

In addition to [Conservation Measures](#) that apply to all Areas and all Species, the following Conservation Measures address wider environmental considerations in this fishery:

Description	Species	Area	Conservation Measure
Monthly Fine-Scale Biological Data Reporting System for Trawl, Longline and Pot Fisheries	All Species	All Areas	<a href="#">CM 23-05</a>
Minimisation of the incidental mortality of seabirds and marine mammals in the course of trawl fishing in the Convention Area	All Species	All Areas	<a href="#">CM 25-03</a>
Limitation of by-catch in Statistical Division 58.5.2 in the 2022/23 season	All Species	Division 58.5.2	<a href="#">CM 33-02</a>

## Additional Resources

- Fishery Report: [pdf](#), [html](#)

- Species Description: [pdf](#), [html](#)
- Stock Assessment Report: [pdf](#)
- Stock Annex: [pdf](#)
- [Fisheries Documents Browser](#)