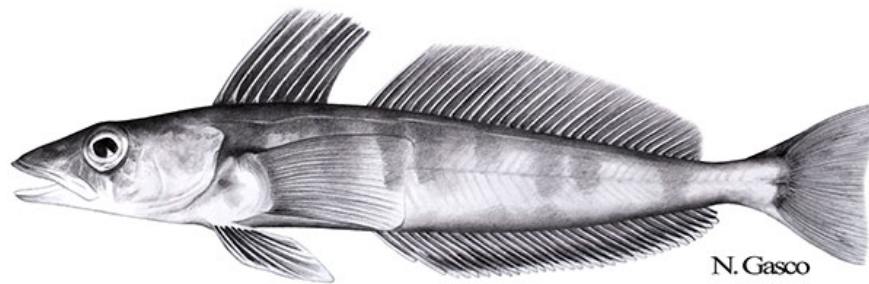


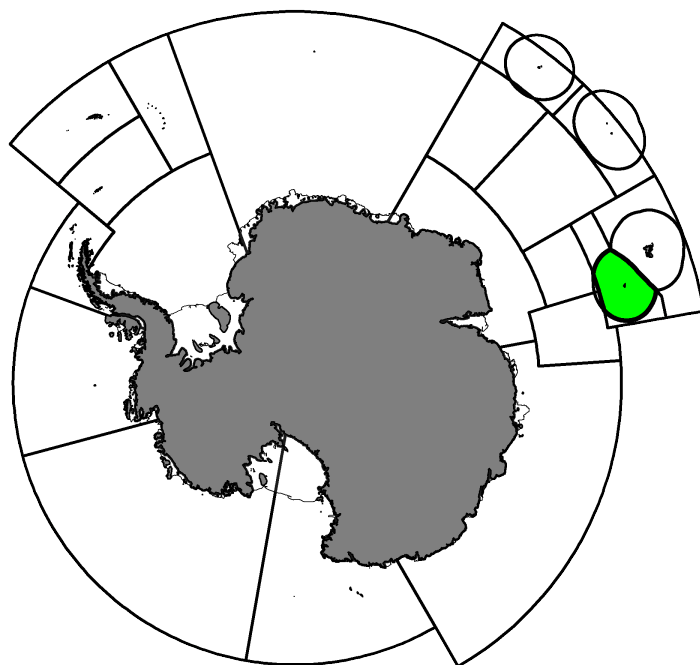
Fishery Summary 2024: *Champscephalus gunnari* at Heard
Island (Division 58.5.2)

CCAMLR Secretariat

07 April 2025

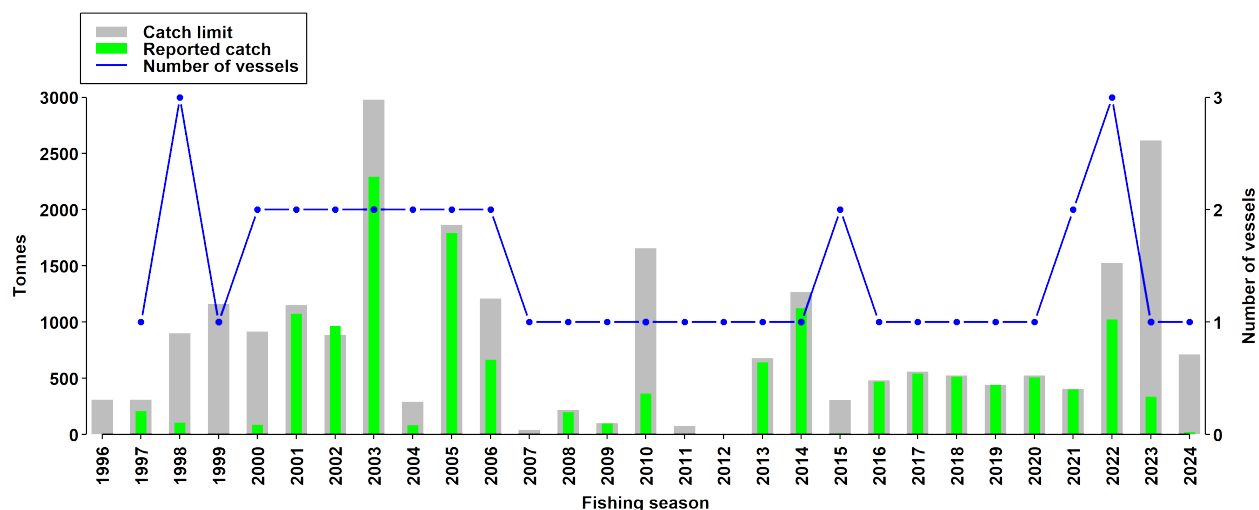


Mackerel icefish *Champscephalus gunnari* Lönnberg, 1905.



Map of the management areas within the CAMLR Convention Area. The region discussed in this summary is shaded in green. Coastlines and ice shelves: UK Polar Data Centre/BAS and Natural Earth. Projection: EPSG 6932.

Catch history



Catch and effort history.

Summary table

Stock Status	Biomass estimated at 16051 tonnes
Classification of Fishery	Established
Fishing gear	Trawl
Conservation Measure specific to this fishery	CM 42-02

Additional Conservation Measures

In addition to [Conservation Measures](#) that apply to all Areas and all Species, the following Conservation Measures address wider environmental considerations in this fishery:

Description	Species	Area	Conservation Measure
Minimisation of the incidental mortality of seabirds and marine mammals in the course of trawl fishing in the Convention Area	All Species	All Areas	CM 25-03
Limitation of by-catch in Statistical Division 58.5.2 in the 2023/24 season	All Species	Division 58.5.2	CM 33-02

Additional Resources

- Fishery Report: [pdf](#), [html](#)
- Species Description: [pdf](#), [html](#)
- Stock Assessment Report: [pdf](#)
- Stock Annex: [pdf](#)
- [Fisheries Documents Browser](#)