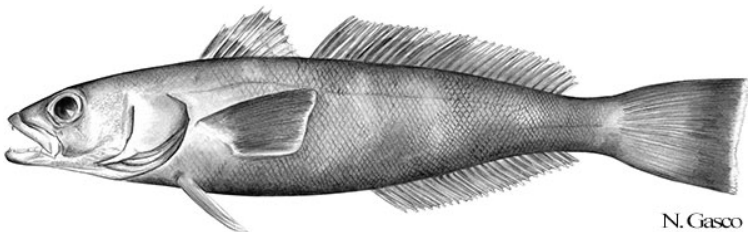


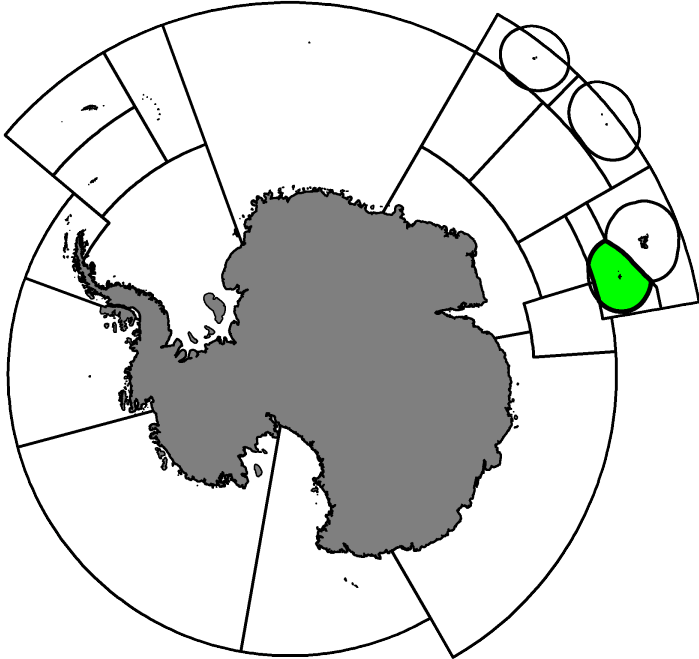
Fishery Summary 2020: *Dissostichus eleginoides* at Heard Island  
(Division 58.5.2)

CCAMLR Secretariat

16 March 2021

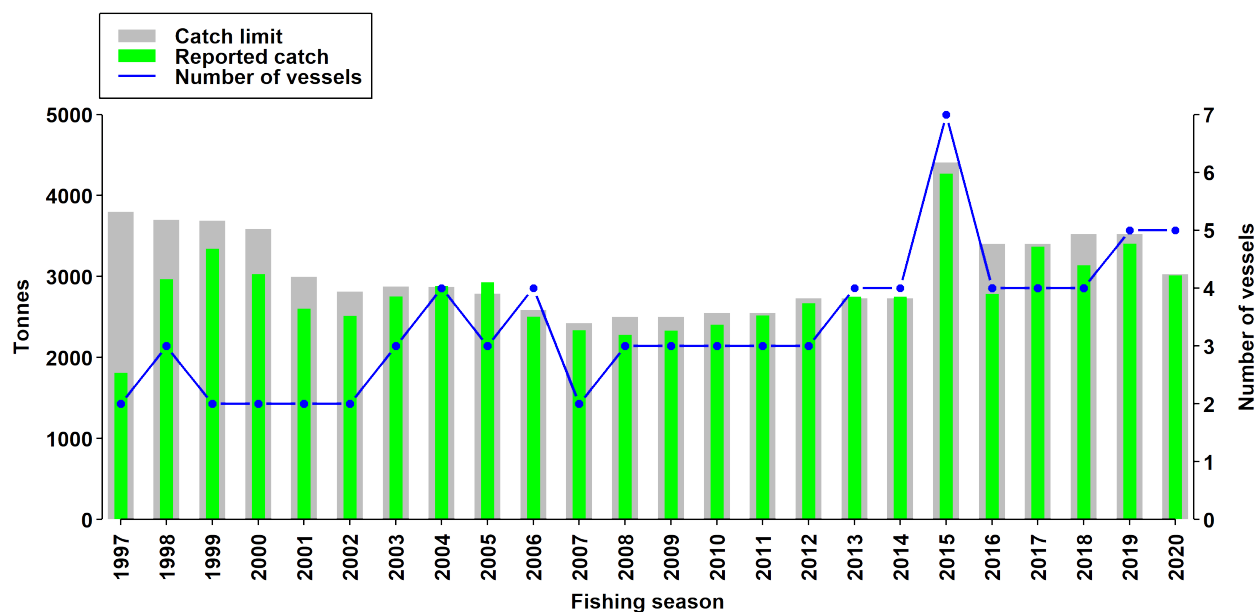


Patagonian Toothfish, *Dissostichus eleginoides* Smitt, 1898.



Map of the management areas within the CAMLR Convention Area. The region discussed in this summary is shaded in green.

## Catch history



Catch and effort history at Heard Island (Division 58.5.2).

## Summary table

<b>Stock Status</b>	Patagonian toothfish stock at 51% of B0
<b>Type of Fishery</b>	Established
<b>Fishing gear</b>	Midwater trawl and demersal longlines
<b>Conservation Measure specific to this Summary</b>	<a href="#">CM 41-08</a>

## Additional Conservation Measures

In addition to [Conservation Measures](#) that apply to all Areas and all Species, the following Conservation Measures address wider environmental considerations in this fishery:

Description	Species	Area	Conservation Measure
Monthly Fine-Scale Biological Data Reporting System for Trawl, Longline and Pot Fisheries	All Species	All Areas	<a href="#">CM 23-05</a>
Minimisation of the incidental mortality of seabirds in the course of longline fishing or longline fishing research in the Convention Area	All Species	All Areas	<a href="#">CM 25-02</a>
Limitation of by-catch in Statistical Division 58.5.2 in the 2018/19 season	All Species	Division 58.5.2	<a href="#">CM 33-02</a>

## **Additional Resources**

- Fishery Report: [pdf](#), [html](#)
- Species Description: [pdf](#), [html](#)
- Stock Assessment Report: [pdf](#)
- Stock Annex: [pdf](#)
- [Fisheries Documents Browser](#)