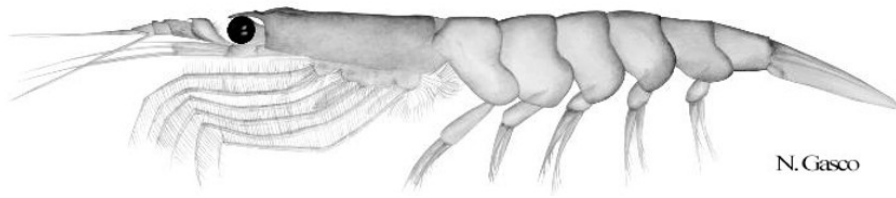


# Species Description 2025: *Euphausia superba*

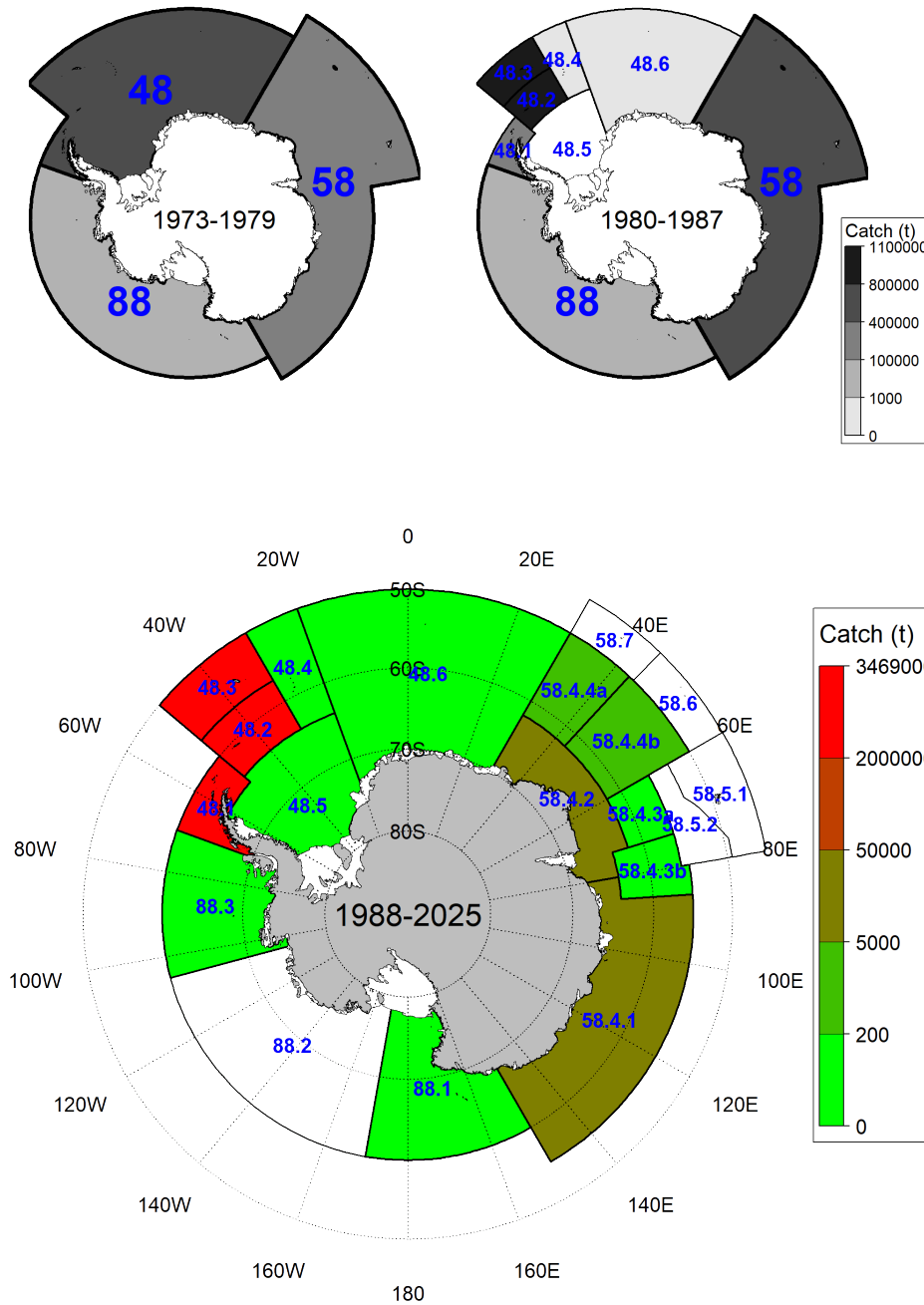
CCAMLR Secretariat

02 March 2026



Antarctic krill, *Euphausia superba* Dana, 1850.

## Distribution of reported catch



Distribution of cumulative reported catch of *Euphausia superba* at the ASD scale (Source: FAO STATLANT data before 1988, C1 data since 1988). In the period 1973-1979, catches are reported at the scale of the FAO Major Fishing Areas: Area 48 (South Atlantic sector), Area 58 (Indian Ocean sector) and Area 88 (Pacific Ocean sector). In the period 1980-1987, this reporting includes catches by Subarea within Area 48. Since 1988 the provision of catch data to CCAMLR has either been at a spatial scale of 1 deg. longitude by 0.5 deg. latitude, with catches aggregated over monthly, 10-day and daily timescales, or, by individual haul. More detailed maps are given in the Fishery Report. Coastlines and ice shelves: UK Polar Data Centre/BAS and Natural Earth. Projection: EPSG 6932.

## Life-history

Krill are small crustaceans of the order *Euphausiacea*, and are found in all the world's oceans. In the Southern Ocean, one species, the Antarctic krill, *Euphausia superba*, has a biomass estimated to be between 60 and 420 million tonnes, with a current best estimate at around 379,000,000 tonnes (more than that of the global population of humans). Krill can live up to 8 years in aquariums but in the wild they probably live for 3 to 4 years, spawning occurs when they are 2 to 3 years old. Given the relatively short life-cycle and relatively high mortality rate of krill, variation in the level of recruitment is a major contributor to the inter-annual variability in the abundance of krill.

## Relevant Conservation Measures

In addition to [Conservation Measures](#) that apply to all Areas and all Species, the following Conservation Measures apply:

Description	Species	Area	Conservation Measure
Notifications of intent to participate in a fishery for <i>Euphausia superba</i>	<i>Euphausia superba</i>	All Areas	<a href="#">CM 21-03</a>
Data Reporting System for <i>Euphausia superba</i> fisheries	<i>Euphausia superba</i>	All Areas	<a href="#">CM 23-06</a>
Precautionary catch limitations on <i>Euphausia superba</i> in Statistical Subareas 48.1, 48.2, 48.3 and 48.4	<i>Euphausia superba</i>	Subarea 48.1, Subarea 48.2, Subarea 48.3, Subarea 48.4	<a href="#">CM 51-01</a>
Precautionary catch limitation on <i>Euphausia superba</i> in Statistical Division 58.4.1	<i>Euphausia superba</i>	Division 58.4.1	<a href="#">CM 51-02</a>
Precautionary catch limitation on <i>Euphausia superba</i> in Statistical Division 58.4.2	<i>Euphausia superba</i>	Division 58.4.2	<a href="#">CM 51-03</a>
General measure for exploratory fisheries for <i>Euphausia superba</i> in the Convention Area in the 2025/26 season	<i>Euphausia superba</i>	All Areas	<a href="#">CM 51-04</a>
General measure for scientific observation in fisheries for <i>Euphausia superba</i>	<i>Euphausia superba</i>	All Areas	<a href="#">CM 51-06</a>

## Additional Resources

- Fishery Summary: [pdf](#), [html](#)
- Fishery Report: [pdf](#), [html](#)
- Management approach: [pdf](#)
- [Fisheries Documents Browser](#)